

J-41-1X J-44-2 c.2

The Journal of Commerce

VOL. XLVII, No. 25.

GARDEN CITY PRESS, JUNE 24, 1919.
Ste. Anne de Bellevue, Que.

PRICE, 10 CENTS.

The Yorkshire of Canada

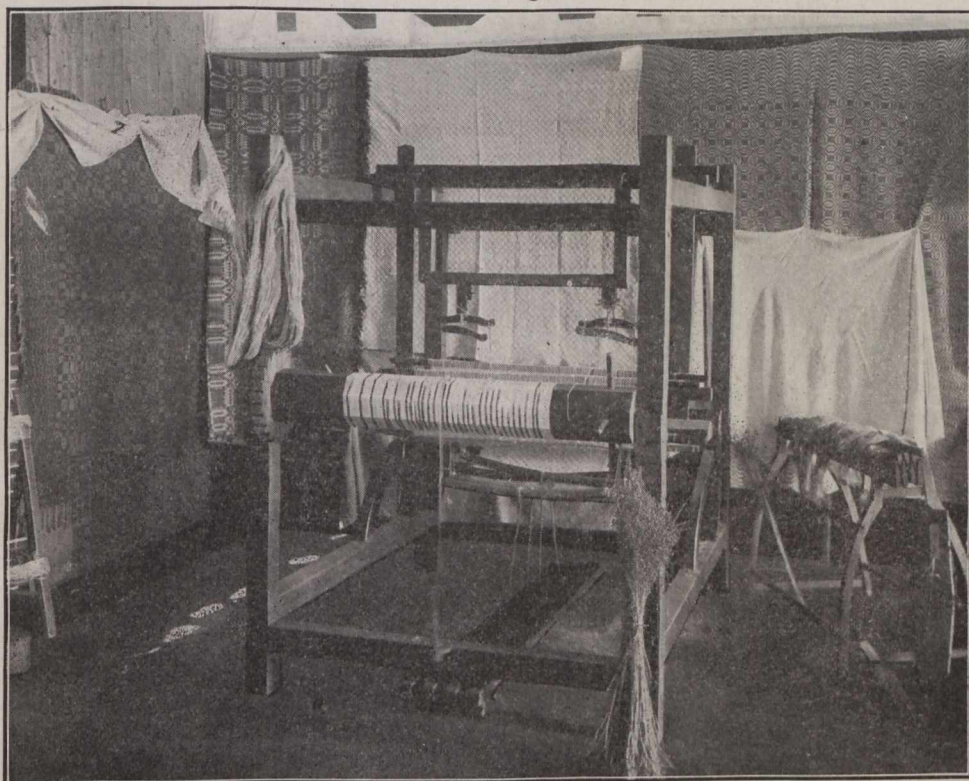


PHOTO SHOWING HAND-
LOOM, SCUTCH BLADE
AND HETCHELL



PHOTO SHOWING EXHIBIT OF
WARPING BAR, QUILL, CREEL,
SWIFT AND ROVING WOOL

