

ARTIFICIAL STONE PAVEMENTS

SIDEWALKS A SPECIALTY
CORPORATIONS Will do well to consider our work
 and prices before letting contract.
The Silica Barytic Stone Company
 of Ontario, Limited.

WALTER MILLS General Manager. **Head Office:**
INGERSOLL, ONT.

The British Columbia
General Contract Co.
 Limited
 Telegraphic Address: "Dredging"

Suite 5, Crowe & Wilson Block, 441 Seymour Street **VANCOUVER, B. C.**

ENGINEERS
 AND
CONTRACTORS

MUNICIPAL WORKS AND BUILDINGS
 DREDGING AND RECLAMATION
 CONCRETE CONSTRUCTION
 RAILWAYS, BRIDGES
 HARBOR WORKS

Stone Crushers and Grinders.
 Steam Road Rollers.
 Fire Engines Steam and Gasoline.
 Bricks Pressed and Enameled.
 "Roman" building stone.



"Tamco"
 Crushed Stone
 for Concrete
 Roofing and
 Macadam.

T. A. Morrison & Co.
 204 St. James Street,
 Telephone Main 4532. **MONTREAL.**

Please mention **CONTRACT RECORD**
 when corresponding with
 advertisers.

Dominion
Bridge
Co., Ltd.

P. O. Address, **MONTREAL, P.Q.**
 Works at **LACHINE LOCKS, P.Q.**

STEEL BRIDGES

For Railways and Highways
 Piers, Trestles, Water Towers,
 Tanks, Buildings, Roofs, Girders,
 Beams and Columns . . .

Toronto Agent: **GEO. E. EVANS,**
 31 Canada Life Bldg., **TORONTO, ONT.**

PORTLAND CEMENT**SEWER PIPES****FIRE BRICKS****FIRE CLAY****ALEX. BREMNER****50 Bleury Street, MONTREAL****SEWER PIPES**

CHIMNEY TOPS
 FLUE LININGS
 WALL COPING



Salt Glazed and
 Vitrified.

TRUE TO SIZE
 IMPERVIOUS TO WATER
 WILL NEVER DISINTEGRATE

Sizes manufactured and
 always in stock:
4-inch (to 24-inch).

Ask for Price List
 and Discount.

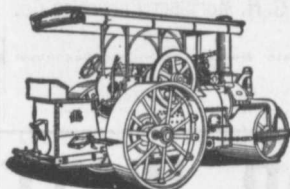
Telephone (Toronto Connection): Park 1809.

Post Office: **SWANSEA.**

THE DOMINION SEWER PIPE CO., LIMITED
 (THE INDEPENDENT COMPANY)

WORKS AND OFFICE
SWANSEA
 (NEAR TORONTO)

"WATEROUS"
ROAD MACHINERY AND
FIRE APPARATUS



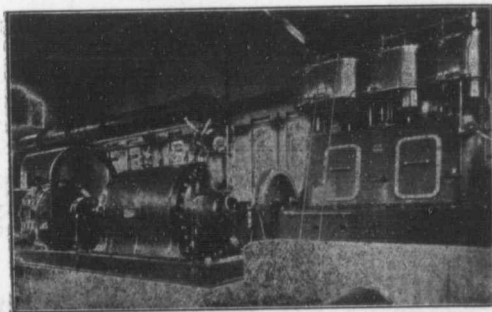
FIRE ENGINES in five sizes,
 with a full line of fire-
 fighting goods.

We Rebuild other makes of
 Fire Engines with our
 patent Boiler.

BRANTFORD PITTS DOUBLE ENGINE STEAM ROAD ROLLER
 IN THREE SIZES—10, 12 and 16 ton.

CORRESPONDENCE SOLICITED.

HUGH CAMERON & CO., Selling Agents **73 Queen St. West,**
 Manning Chambers, **TORONTO**



Six Stage Turbine Pump Electric Motor and High Speed Steam
 Engine. Built for the Montreal Water and Power Co.,
 to do 4500 imperial gallons a minute against
 300 feet head. Overall H.P. 70 per cent.

PATENT
TURBINE PUMPS

KORTUNG TWO CYCLE GAS ENGINES,
GRAVITY AND PRESSURE FILTERS,
WATER SOFTENING APPARATUS,
ELECTRICAL MACHINES.

— BUILT BY —

MATHER & PLATT, LIMITED
MANCHESTER, ENG.

CANADIAN AGENTS:—

Drummond, McGall & Co., Montreal