

FIGURES NOS. 124 R. AND 125 R.—ATTRACTIVE AFTERNOON GOWNS.

(For Illustrations see Page 279.)

FIGURE No. 124 R.—This illustrates a Ladies' waist and skirt. The waist pattern, which is No. 3749 and costs 10d. or 20 cents, is in eight sizes for ladies from thirty to forty-four inches, bust measure, and is also pictured on page 309. The skirt pattern, which is No. 3608 and costs 10d. or 20 cents, is in nine sizes from twenty to thirty-six inches, waist measure.

Charming simplicity is the keynote of this pleasing gown. Cerise-and-white plaid gingham and fancy white

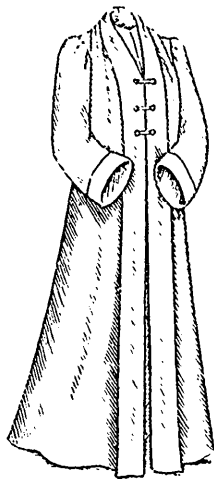
corded satin for the yoke, and lace frills, ribbon quilling, ruffles of chiffon for garniture.

FIGURE No. 125 R.—This includes a Ladies' waist and skirt. The waist pattern, which is No. 3757 and costs 10d. or 20 cents, is in eight sizes for ladies from thirty to forty-four inches, bust measure, and is differently represented on page 310. The skirt pattern, which is No. 3822 and costs 1s. or 25 cents, is in nine sizes from twenty to thirty-six inches, waist measure, and may be again seen on page 320.

Dainty in the extreme is the dressy gown here depicted, made of blue vailing and tucked white silk and lavishly adorned with buttons, appliques of chiffon and ruffles of embroidered chiffon. The skirt is exceedingly attractive. A cluster of tiny dart-shaped tucks is taken up at each side, which, together with a group of deeper tucks at the center of the back, where the skirt is laid in a box-pleat, remove all the fulness at top. The skirt is in four-gored style and is finished with a sweep.

The waist has a seamless back, tucked at the bottom, and smooth at the top, where it overlaps a deep square yoke. The full fronts are gathered at the bottom, tucked at the arm-hole and flare broadly over a fancy yoke chemisette. Two ruffles of chiffon are cascaded down the closing, and the standing collar is beautified by two turn-over sections and a jaunty bow of orange patent. A flaring cuff finishes the small, close-fitting sleeves which is cut out at the top on the upper side to disclose the cap-facing.

In light-weight cloth or Liber cashmere, associated with Liber satin heavily encrusted with silk paillettes, the gown will be remarkably stylish.



3756



3756

Front View.

LADIES' JAPANESE WRAPPER OR LOUNGING-ROBE.
(TO BE MADE WITH OR WITHOUT THE STAY-LINING.)

(For Description see Page 311.)



3756

Back View.

tucking and mull were here associated for the mode, which is decorated with narrow frills of embroidery. The seamless back and pouching fronts of the waist are gathered at the bottom, but are plain at the top, where they are cut out to accommodate a deep, smooth, round yoke. A scalloped circular bertha outlines the yoke, which is topped by a fancy stock. The shapely two-seam sleeve is completed by a circular cuff that flares over the hand.

The skirt is five-gored and is without fulness at the front and sides. It is fitted at the back with an underlying double box-pleat and is extended to form a slight sweep.

The gown may be copied in gingham, lawn, vailing or foulard, with all-over embroidery or lace, tucked silk or

The novel skirt is in dip length and is known as the wrap skirt. It consists of three sections overlapped at the left side of the front and the right side of the back and joined in a seam at the center of the back, where below the hips the skirt falls in fan-like folds.

The design is suitable for cashmere, vailing or zibeline. Lace appliqué, passementerie, strappings of cloth or bands of