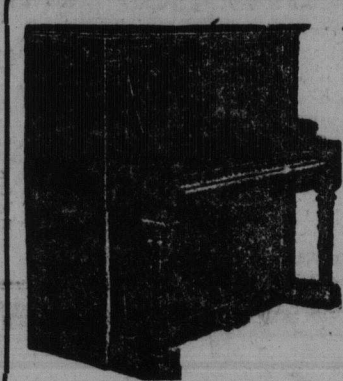


# WE HAVE TURNED ST. JOHN UPSIDE-DOWN



**THE MOST SENSATIONAL OUTPOURING OF PIANO BARGAINS IN HISTORY!**  
**THE GIGANTIC \$50,000 GOING OUT OF BUSINESS PIANO SALE OF**  
**J. A. McDONALD PIANO AND MUSIC CO., LTD.**

Has Reached Beyond Human Imagination—The Most Astonishing Values Are Still On Hand



**This Mason & Risch Piano**  
**Will Go on Sale at Once**  
**LOOK AT THIS PRICE**  
**\$147**

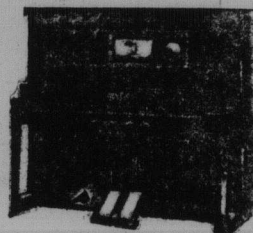
**Cash or Easy Payments**

This is a genuine Mason & Risch Piano worth \$400 of any man's money. But at this Great Going Out of Business Sale we cannot consider values. Our price on this Piano to sell at once is \$147 and we will make terms as low as \$1.50 weekly. Come here and see this Piano.

**This \$650 Player Piano, 20 Rolls of Music, Bench to Match, Goes on Sale at Once**

**\$325**

Here is a real Genuine Player Piano Sensation. Remember, there is only one of these players. Get here at once and do not delay; the first Player Piano customer will get the grandest Player Piano Bargain of the entire 20th Century. We absolutely guarantee this player. First come first served. This player will go on sale just as soon as this paper leaves the press. We will accept a ten per cent. cash payment and we will arrange easy payments on the balance.



**PAY \$2.50 PER WEEK**

**This Beautiful Brand New Piano Will Be the First Piano Offered for Sale Tuesday Morning. This Piano Will Go on Sale Tuesday Morning at 8 o'clock and Will Be Sold to the First Buyer.**

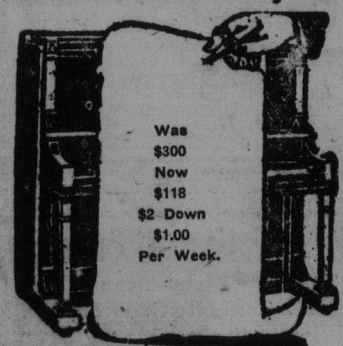
**Mahogany or Oak**

**This New Piano \$98**

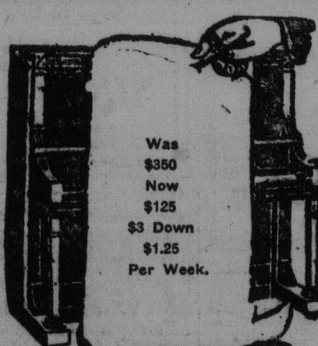
**THE TERMS: \$2.00 DOWN; \$1.00 WEEKLY**

**SPECIAL ATTENTION PLEASE**—We can only show a small part of the stock on our floors in this advertisement. We have ten organs left; come and make us an offer. We have about 25 New Pianos and about ten used ones on hand and we will not let price or terms stop us. We are determined to sell this stock at some price. **EXTRA SPECIAL**—All sheet music is reduced. All strings for instruments, all Violins, all small instruments, in fact everything in the store is cut and slashed to sell it and convert it into money quickly. **POSITIVELY NO MUSIC OR STRINGS CHARGED AT THE CUT PRICES.**

**Four Sensational Specials for Tuesday--Look at These Prices and Terms--Make Us a Cash Offer**



Was \$300  
 Now \$118  
 \$2 Down  
 \$1.00 Per Week.



Was \$350  
 Now \$125  
 \$3 Down  
 \$1.25 Per Week.



Was \$350  
 Now \$130  
 \$4 Down  
 \$1.25 Per Week.



Was \$400  
 Now \$225  
 \$10 Down  
 \$1.50 Per Week.

**STORE OPEN EVENINGS UNTIL 9 O'CLOCK**

**J. A. McDONALD Piano and Music Company, Ltd.**  
**7 Market Square, St. John, N. B.**

**We Pay Freight to Any Point During This Sale**

All Goods, Accordions, Flutes, Sheet Music, Banjos, Organs, in fact everything goes at tremendous discounts.

## TRANSPORTATION ADVERTISING

### CUNARD LINE

**CANADIAN SERVICE.**  
**MONTREAL TO LONDON**  
 (via Falmouth)  
 From London. From Montreal.  
 Nov. 4. AUSONIA. Nov. 21.  
 Cabin and Third Class.

**MONTREAL TO BRISTOL**  
 (Avonmouth Dock)  
 Cabin Passengers Only.  
 For information apply The Robert Reford Co., Limited, General Agents, 162 Prince William Street, St. John, N. B.

**MANCHESTER LINE.**  
 From Manchester. From St. John.  
 Oct. 23 Manchester Merchant. Nov. 6.  
 Nov. 11 Manchester Port. Dec. 2.  
 Steamers marked \* take cargo for Philadelphia.  
 WM. THOMSON & CO., LTD.  
 Agents, St. John, N. B.

**FURNESS LINE.**  
 From London. From St. John.  
 Oct. 12-Kanawha. Oct. 28.  
 Oct. 23-Sachem. Nov. 7.  
 Nov. 8-Rappahannock. Nov. 21.  
 Dates subject to change.  
 WILLIAM THOMSON & CO., LTD.  
 Agents, St. John, N. B.



**NOTICE TO MARINERS.**  
 Notice is hereby given that the buoys marking war channel, entrance Halifax Harbor, have been removed and discontinued.

CHAS. H. HARVEY,  
 Agent Marine and Fisheries Dept.  
 Halifax, N. S., Nov. 3, 1916.



**NOTICE TO MARINERS.**  
 Notice is hereby given that the light on Yarmouth North West Fairway gas and whistling buoy is reported not burning. Will be relighted soon as possible.

J. C. CHESLEY,  
 Agent, Marine and Fisheries Department.  
 St. John, N. B., November 4th, 1916.



**NOTICE TO MARINERS.**  
 Notice is hereby given that the light on Hen and Chickens gas and bell buoy has been reported not burning. Will be relighted soon as possible.

J. C. CHESLEY,  
 Agent, Marine and Fisheries Department.  
 St. John, N. B., November 4th, 1916.

### SHIPPING NEWS

**MINIATURE ALMANAC.**  
 November—Phases of the Moon.  
 First quarter. 2nd—1h. 51m. a.m.  
 Full moon. 9th—4h. 18m. p.m.  
 Last quarter. 17th—6h. 0m. p.m.  
 New moon. 25th—4h. 50m. p.m.

Date.	Ch. of W.	Sun. rises.	Sun. sets.	H. water a.m.	H. water p.m.	L. water a.m.	L. water p.m.
7 Tue.	17	7:17	4:59	9.26	21.52	3.26	15.55
8 Wed.	18	7:18	4:58	10.14	22.40	4.19	16.44
9 Thu.	19	7:19	4:57	10:59	23:26	5:07	17:29

**DOMESTIC PORTS.**  
 Halifax, Nov 3—Ard: Schs Emily Anderson, Haugh, Barbados; Millicent, New York.  
 Hawkesbury, Nov 3—Sld: Tern Sch Eva C, Barbados.

**BRITISH PORTS.**  
 London, Nov 3—Ard: Str Minnesota, Hasker, Philadelphia.  
 Sld Nov 1: Str Colontian, McDonald, Boston.  
 Manchester, Nov 3—Ard: Str Manchester Citizen, Montreal.  
 Liverpool, Nov 3—Ard: Str Etionian, Gardner, Boston.  
 London, Nov 2—Ard: Str Milwaukee, Montreal.  
 Barry, Nov 2—Sld: Str Samland, Boston.  
 Cape Town, Oct 28—Sld: Str Howickhall, Boston and New York.

**FOREIGN PORTS.**  
 Boston, Nov 2—Ard: Str Cloughton, London; 3rd: Schs William E Litchfield, Newburyport; John S Beacham, Gaspe, P. Q.  
 Sld Nov 3: Str Sardinian, Glasgow; Sch J Arthur Lord, Shulee, N. S.  
 Eastport, Nov 3—Sld: Schs Centennial (from Sand River, N. B.), New York; Fannie and Fay, (from Whiting) do.  
 New York, Nov 3—Ard: Schs James Rothwell, South Amboy for Hiddford; Charles H Kilnick, Roberts Harbor.  
 Sld Nov 3: Schs John Pierce, Virginia; Stanley M Seaman, Perth Amboy; Addie P McFadden, Port Johnson for Newcastle, Me; Two Brothers, New York for Block Island.

### CANADIAN GOVERNMENT RAILWAYS

#### ST. JOHN - MONTREAL OCEAN LIMITED

Daily Except Sunday.  
 Dep. St. John. 7.00 a.m.  
 Arr. Montreal. 8.05 a.m.  
**MARITIME EXPRESS**  
 Daily Except Sunday.  
 Dep. St. John. 6.10 p.m.  
 Arr. Montreal. 6.50 p.m.

#### Crystal Stream Steamship Co.

St. John-Fredericton route.  
 The Stmr. D. J. PURDY will sail from North End for Fredericton and intermediate points every Monday, Wednesday and Friday at 8 a.m., returning alternate days, leaving Fredericton 7 a.m.  
 The "D. J. Purdy" and "Majestic" can be chartered at any time for Excursions and Picnics.

By special arrangement with the C. P. R. passengers may go to Fredericton on the Stmr. D. J. Purdy and return by train same or following day, rate \$2.50, stopover rate \$3.00, also effective good for return until Oct. 31st. This arrangement also applies in reverse direction.

St. John-Washademoak Route.  
 The Steamer "MAJESTIC" will sail from North End for Cole's Island and intermediate points every Tuesday, Thursday, and Saturday at 9 a.m.; returning alternate days, leaving Cole's Island at 6 a.m.  
 D. J. PURDY, Manager.  
 Warehouse No. 204.

#### Majestic Steamship Company.

Steamer Champlain will leave public wharf, North End, on and after Tuesday, Oct. 17th, on Tuesdays, Thursdays and Saturdays, at 10 o'clock for Hatfield's Point and intermediate landings. Return on alternate days, due in St. John at 1 o'clock.  
 R. S. ORCHARD, Manager.

#### ST. JOHN - FREDERICTON

##### STEAMER HAMPSHIRE

Will leave old May Queen wharf at 8.30 a.m. (St. John time) on Tuesday, Thursday and Saturday for Fredericton and intermediate ports.  
 JOSEPH WILLIAMS,  
 Managing Owner, 'Phone M 2701

#### GRAND MANAN S. S. CO.

After Oct. 1st and until further notice S. S. Grand Manan leaves Grand Manan, Mondays 7.30 a.m., for St. John, returning leaves St. John Wednesdays 7.30 a.m., both ways via Campobello, Eastport and Wilson's Beach.  
 Leave Grand Manan Thursdays 7.30 a.m., for St. Stephen, returning Friday 7 a.m., via Campobello, Eastport and St. Andrews, both ways.  
 Leave Grand Manan Saturdays 7.30 a.m., round trip St. Andrews, returning 1 p.m., both ways via Campobello and Eastport.

Atlantic Standard Time.  
 SCOTT D. GUPTILL, Mgr.

#### Eastern Steamship Lines.

All-the-Way by Water.

##### INTERNATIONAL LINE.

Steamships "Calvin Austin" and "North Star"

Leave St. John Mondays and Thursdays at 9.00 a.m. (Atlantic time), for Eastport, Lubec, Portland and Boston. Return, leave Central Wharf, Boston, Mondays and Thursdays at 9.00 a.m. for Portland, Eastport, Lubec and St. John.

##### MAINE STEAMSHIP LINE

Between Portland and New York.  
 Reduced Fares and Stateroom Prices.  
 From Portland and New York.  
 Passenger service Tuesday and Saturday, one week; Thursday, alternate week. Freight service Tuesday, Thursday and Saturday. Leave Franklin Wharf, Portland, 6 p.m. Leave New York, 5 p.m.

##### METROPOLITAN LINE.

Direct Service Between Boston and New York, 13-12 Hours.  
 Route via Cape Cod Canal.  
 Express Steel Steamships Massachusetts and Bunker Hill. Leave North Side India Wharf, Boston, week days and Sundays at 5 p.m. Same service returning from Pier 18, North River, foot of Murray St., New York City.

City Ticket Office, 47 King street.  
 A. C. CURRIE, Agent, St. John, N. B.; A. E. FLEMING, T. F. & P. A. St. John, N. B.

#### The Maritime Steamship Co., Limited.

On March 3, 1916, and until further notice the S.S. Connors Bros., will run as follows: Leave St. John, N. B., Thorne Wharf and Warehousing Company, Ltd., on Saturday, 7.30 a.m., daylight time, for St. Andrews, N. B., calling at Dipper Harbor, Beaver Harbor, Black's Harbor, Back Bay or L'Etete, Deer Island, Red Store or St. George. Returning leave St. Andrews, N. B., Tuesday for St. John, N. B., calling at L'Etete or Back Bay, Black's Harbor, Beaver Harbor and Dipper Harbor. Weather and tide permitting.  
 Agent—Thorne Wharf and Warehousing Co., Ltd., 'Phone, 2851. Mgr. Lewis Connors.

This company will not be responsible for any debts contracted after this date without a written order from the company or captain of the steamer.

### TRAVELLING?

Passage Tickets By All Ocean Steamship Lines.

**WM. THOMSON & CO. Limited.**  
 Royal Bank Bldg., St. John, N. B.