

INDEX TO ADVERTISEMENTS (Continued).

	PAGE		PAGE		PAGE
I		R			
Ideal Concrete Machinery Co., South Bend, Ind.	17	McDougall, John, Caledonian Iron Works Co., Montreal	60	Warrington Typewriter Co., Toronto	16
Imperial Oil Co., Petrolia, Ont.	45	McGuire, W. J. Limited, Toronto and Montreal		Robb Engineering Co., Amherst, N.S.	7
International-Acheson-Graphite Co., Niagara Falls, Ont.	17	McKinnon Dash & Metal Works Co., St. Catharines, Ont.	obo		
International Steel Co., Montreal	43	McLaren, D. K., Limited, Montreal and Toronto	48	S	
		McLean, W. B. & Co., Montreal	47	Sadler & Haworth, Montreal	10
J				Sheldons, Limited, Galt, Ont.	ifo
Jeffrey Mfg. Co., Columbus, Ohio	8	N		Smart-Turner Machine Co., Hamilton, Ont.	obo
Jones & Moore Electric Co., Toronto	13	National Typewriter Co., Toronto	46	Smith's Falls Malleable Castings Co., Smith's Falls, Ont.	obo
Jones, J. L. Engraving Co., Toronto	47	Neff, A. C. & Co., Toronto	14	Spence, R. & Co., Hamilton, Ont.	46
		Nichols Chemical Co., of Canada, Montreal	44	Stamp, W. H., Devonport, England	46
K		Northern Aluminum Co., Shawinigan Falls, Que., and Pittsburgh, Pa.	6	Standard Bearings, Limited, Niagara Falls, Ont.	
Kahn, Gustave, Toronto	14	Northern Electric & Mfg. Co., Montreal	11	Stevens Mfg. Co., Galt, Ont.	47
Kelly's Directories, Toronto and London Eng.	44	Nova Scotia Steel & Coal Co., New Glasgow, N.S.	4	Storoy, W. H., & Son, Acton, Ont.	14
Kerr Engine Co., Walkerville, Ont.	16			Stowe-Fuller Co., Cleveland, Ohio	41
		O		Syracuse Smelting Works, Montreal and New York	10
L		Oakey, John & Sons, London, England	45		
Laurie Engine & Machine Co., Montreal	ifo	Ontario Lime Association, Toronto	46	T	
Lealie, A. C. & Co., Montreal		Ontario Wind Engine & Pump Co., Toronto	46	Tippett, Arthur P. & Co., Montreal	44
Loignon, A. & E., Montreal	14	Orford Copper Co., New York, N.Y.	16	Toronto & Hamilton Electric Co., Hamilton, Ont.	12
London Rolling Mill Co., London, Ont.	49	Otis-Fensom Elevator Co., Toronto	50	Toronto Paper Mfg. Co., Cornwall, Ont.	46
Lowell Crayon Co., Lowell, Mass.	14			Toronto Pottery Co., Toronto	15
Lysaght, John, Limited, Bristol, Eng., and Montreal	obo	P		Trussed Concrete Steel Co., Toronto	14
		Packard Electric Co., St. Catharines, Ont.	13	Turner, Vaughn & Taylor Co., Cuyahoga Falls, Ohio	47
M		Park Bros., Chatham, Ont.	46		
Marion & Marion, Montreal	14	Parke, Roderick J., Toronto	14	U	
Metal Shingle & Siding Co., Preston, Ont.		Pennsylvania Fire Brick Co., Beech Creek, Pa.	15	Union Drawn Steel Co., Hamilton, Ont.	6
Mica Boiler & Covering Co., Montreal	46	Perrin, William R., & Co., Toronto and Chicago, Ill.	49		
Mitchell, Charles H., C.E., Toronto	14	Phillips, Eugene F., Electrical Works, Montreal	13	V	
Monongahela River Consolidated Coal & Coke Co., Buffalo, N.Y.	15	Producer Gas Co., Toronto	18	Viau, Henri, Montreal	14
Morris Machine Works, Baldwinsville, N.Y.	17	Pullan, E., Toronto	46		
Morrison, James, Brass Mfg. Co., Toronto	16			W	
Morrison, T. A. & Co., Montreal	14	Q		Weber Gas Engine Co., Kansas City, Mo.	ibo
Morrow, John, Screw, Limited, Ingersoll, Ont.	6	Queen City Oil Co., Toronto	obo	Williams, A. R. Machinery Co., Toronto	
				Winn & Holland, Montreal	
Mo					
McArthur, Cornelle & Co., Montreal	obo				
McCullough-Dalzell Crucible Co., Pittsburg, Pa.	41				

OTIS ELEVATORS

FOR ALL DUTIES

Electric, Hydraulic, Belt, Steam and Hand Power

MANUFACTURED BY

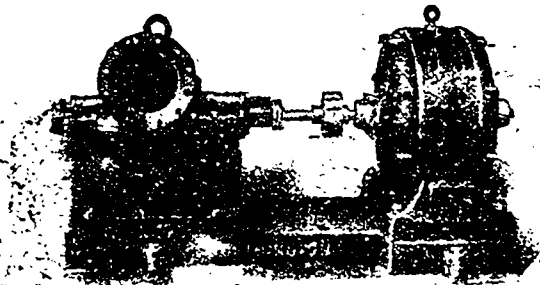
OTIS-FENSOM ELEVATOR COMPANY, LIMITED

Head Office, TORONTO, ONT.

Works, HAMILTON, ONT.

The JOHN McDUGALL CALEDONIAN IRON WORKS CO., Limited

MONTREAL, P.Q.



Boilers: Return Tubular, McDougall Water Tube, Etc.
Tanks: Water Tanks, Penstocks, Filters.
Machinery: Complete Power Plants designed and installed.

Sole Manufacturers in Canada for Worthington Turbine Pumps and Double Impulse Water Wheels.

HEAD OFFICE AND WORKS: MONTREAL.

DISTRICT OFFICES:

Montreal, 82 Sovereign Bank Bldg.
Toronto, 810 Traders Bank Bldg.
Winnipeg, 251 Notre Dame Ave.
Vancouver, 416 Seymour Street
Nelson, Josephine Street
New Glasgow, N.S., Telephone Bldg.

When writing to Advertisers kindly mention THE CANADIAN MANUFACTURER.