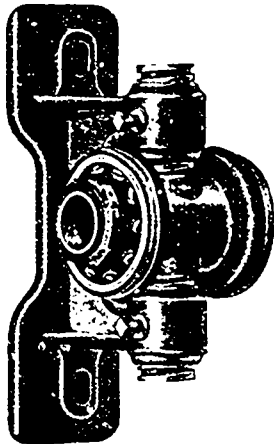


AN ENGINE possessing the qualities of Economy, Simplicity, Quick and Even Regulation, Easy to Operate, Needing Few Repairs is the kind required by steam plant operators. These essentials are embodied in the WHEELLOCK and IDEAL STEAM ENGINES made by : : : : : : : : : : :

WE MAKE Wheellock Engines, Corliss Engines, Ideal Engines, Gas and Gasoline Engines, Boilers, Water Wheels, Pumps, Flour Mill Machinery, Oat Meal Mill Machinery, Oat Meal Steam Pan Kilns, Wood Working Machinery, Iron Pulleys, Wood Rim Silt Pulleys, Shafting, Hangers, Gearing, Friction Lutch Pulleys, Friction Clutch Couplings, etc., Safes, Vaults and Vault Doors.

THE GOLDIE & McCULLOCH CO.,
LIMITED
GALT, Ont., Canada.



Are You Using Power

If a saving of 75% of your shaft friction, and 95% of your lubrication interests you write us for prices and catalogues of our Double Ball Bearings.

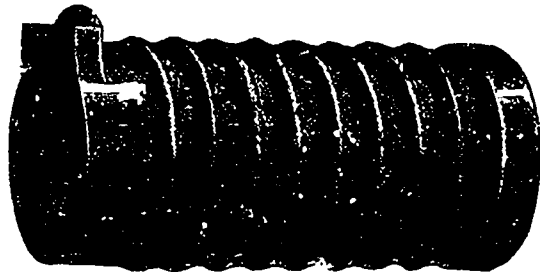
55 of the leading Canadian Factories now using our Bearings

Chapman Double Ball Bearing Co.
of Canada, Limited
TORONTO. - ONT

**ENGINES AND BOILERS
HOISTING ENGINES
LOCOMOTIVE TENDERS
SHIPS, YACHTS AND TUGS**

THE BERTRAM ENGINE WORKS CO., LTD.
Bathurst and Niagara Sts,
.. TORONTO ..

MORISON Suspension Furnaces

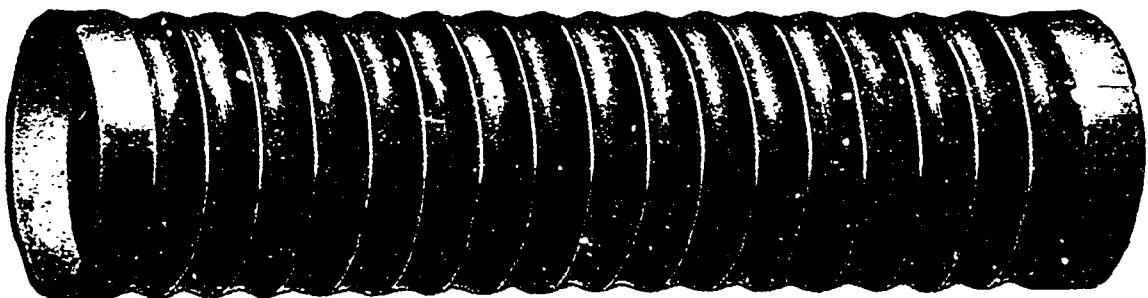


For Land and Marine Boilers

With Plain Ends or Flanged to any required shape

Uniform Thickness, Easily Cleaned, Unexcelled for Strength, Unsurpassed for Steaming Capacity.

The universally satisfactory record of "THE MORISON" proclaims it the best furnace made.



MANUFACTURED BY

THE CONTINENTAL IRON WORKS, WEST AND CALVER STS., New York
Near 10th and 23rd Street Ferriss.
Sole Canadian Agent **MR. GEORGE HOLLAND, M. C. Soc. C. E., P. O. Box 529, MONTREAL**