

C H E S S .

(To Correspondents.)

**BETTY MARTIN.**—You have again come dreadfully near the solution of our Problem.

**CLOVERFIELD.**—Strangely enough, Enigma 25 can be solved in the stipulated number of moves, although by error White's R occupies Q Kt 6th, instead of K Kt 6th. We recommend you to try this enigma as amended.

**M. T. H.**—Totally incorrect.

**CAROLUS.**—Your adversary was perfectly justified in enforcing the rule "touch and move." The law regarding this question stands as follows: "A piece or pawn touched must be played, unless, at the moment of touching it, the player say "J'adoube," or words to that effect; but if a piece or pawn be displaced or overturned by accident, it may be restored to its place."

Solutions to Problem 6, by J. B., G. P., J. H. R., and Pawn are correct; all others are wrong.

Solutions to Enigmas in our last by Cloverfield, Amy, and Pawn are correct.

**ERRATA.**—Enigma 25. For "R at Q Kt 6th" read "R at K Kt 6th."

On page 543, col. 1. Blacks 26th move, for "K to his 2nd" read "K to his B 2nd";—Col. 2. Blacks 16th move, for "K to Q R sq. read "K to Q B sq."

On page 544, in not (k) to Game IV., for "Not Kt, takes Kt on account of 33, Q to K. R 8th (ch) followed by Q R to K 2nd (ch)" read "Not Kt takes Kt on account of 33, Q to K R 8th (ch) followed by K R to K sq. (ch.) &c."

SOLUTION TO PROBLEM NO. VI.

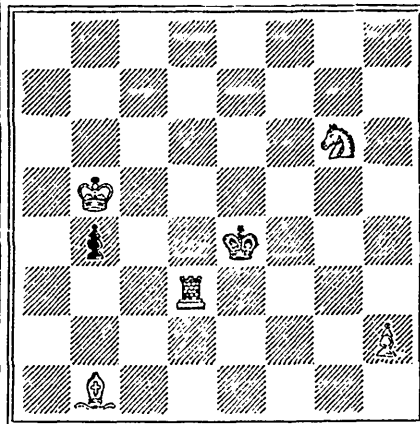
- | WHITE.               | BLACK.            |
|----------------------|-------------------|
| 1. R to K 8th (ch)   | Kt takes R or (A) |
| 2. Q to K B 8th (ch) | Q interposes      |
| 3. B to Q 4th (ch)   | Kt interposes     |
| 4. B mates.          |                   |
|                      | (A)               |
|                      | K to Kt 2nd       |
| 2. B takes P (ch)    | K to B 2nd or (B) |
| 3. Q to K R 5th (ch) | K to B 3rd        |
| 4. Q mates.          |                   |
|                      | (B)               |
|                      | K to Kt 3rd (a)   |
| 3. Q to K B 5th (ch) | K takes B         |
| 4. Q mates.          |                   |

(a) Should K take B, or move on K B 3rd, mate would ensue next move.

PROBLEM NO. VII.

By Mr. George Palmer.

BLACK.



WHITE.

While to play and mate in four moves.

ENIGMAS.

No. 26. By Rev. H. Bolton.

WHITE.—K at Q B 3rd; R at Q Kt 7th; P at Q B 7th and Q Kt 5th.

BLACK.—K at Q B 4th.

White to play and mate in three moves.

No. 27. From the Schachzeitung.

WHITE.—K at K B sq; Q at K R 7; Rs at K B 4th and K 5th; Bs at K Kt 5th and Q Kt 5th; Kts at Q 2nd and Q R 4th; P at K Kt 2nd.

BLACK.—K at Q B sq; Q at Q B 7th; R at Q 2nd; B at K 3rd; Kts at Q 5th and Q Kt 3rd; P at Q Kt 2nd.

White to play and mate in three moves.

TORONTO CHESS CLUB.

The first annual meeting of this society was held at the rooms of the club on the evening of the 3rd ultimo, the President (Professor Cherriman) in the chair. The Secretary read the report for the year just ended, from which it appeared that upwards of thirty gentlemen had been enrolled as members during the year, of whom twenty-two still remained on the books, the remainder having left Toronto to reside elsewhere. A balance appeared at the credit of the club, which, for the first year of its existence, was deemed most satisfactory, and the second year commenced with the admission of several new members, so we have every reason to expect that this society will finally succeed.

We make room for the latter part of the report, complaining of the very scant attendance of mem-