

Ottawa. The annual meeting of the Provincial Builders' Association of Ontario takes place February 10th-13th, so that nearly a week intervenes between the conference at Ottawa and the meeting of that provincial body.

By its action in postponing the conference, the Association of Canadian Building and Canadian Industries again proves its desire to interest in the association all engineering-contractors and those civil engineers who deal with construction problems.

### PERSONALS

A. C. GARDEN has been elected chairman of the Hamilton harbor commission for 1920.

W. J. CUNNINGHAM has been appointed superintendent of the Edmonton power plant.

J. C. MITCHELL, formerly superintendent of construction, Toronto Harbor Commission, has been appointed assistant to E. L. Cousins, general manager of the commission. F. Rockwell replaces Mr. Mitchell as superintendent of construction.

N. C. MILLS, vice-president and general manager of the Montreal Armature Works, Ltd., Montreal, has entered private practice in partnership with A. J. F. MONTABONE, Mr. Montabone has specialized in power projects, particularly for pulp and paper mills. Mr. Mills is a member of the American Institute of Electrical Engineers and of the American Society of Mechanical Engineers. Mr. Montabone is a member of the American Institute of Electrical Engineers.

ARTHUR M. CRANE, general sales manager of the New York Continental Jewell Filtration Co., has been appointed general manager of that company, succeeding the late Robert E. Milligan. D. C. Williamson, who has been responsible for the design of the company's plants and apparatus for nearly 20 years, continues as chief engineer; and E. K. Sorenson, who was assistant to Mr. Milligan for many years, remains as secretary. These three gentlemen are also directors of the company.

J. G. MINGLE, formerly manager of the Cleveland office of the Rust Engineering Co., Pittsburgh, Pa., has been appointed general sales manager of that company, with headquarters at Pittsburgh. Mr. Mingle is well-known in Canada, this country having been included in the territory which he "covered" from Cleveland. It was recently reported that Mr. Mingle intended to join the staff of a consulting engineer as Detroit representative, but he has decided to remain with the Rust Engineering Co.

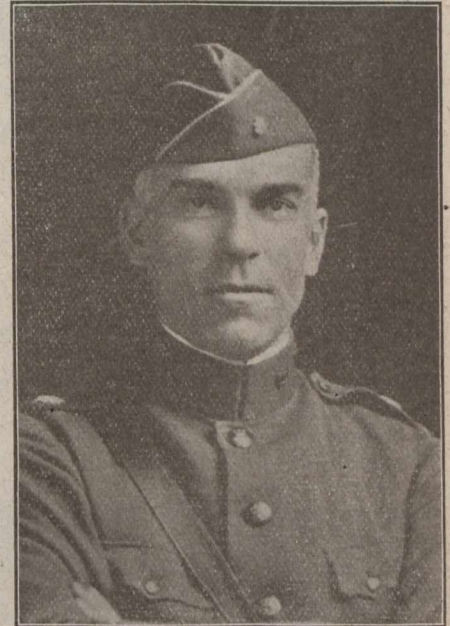
E. R. GRAY, city engineer of Hamilton, Ont., whose resignation was erroneously reported recently in a Hamilton daily newspaper, has not resigned but has been given two weeks' leave of absence for the inspection of asphalt pavements in Toronto and Detroit. Mr. Gray also expects to visit Milwaukee to study the activated sludge process, as he intends to build a central sewage disposal plant in Hamilton within the next few years, and to carry to it all the sewage of the city by means of a proposed intercepting sewer to be laid along Burlington street.

GORDON MITCHELL, who graduated with honors in civil engineering at the University of Toronto with the class of 1915, has been appointed assistant to the superintendent of construction for the Beaver Engineering & Contracting Co., New York, on the construction of water works extensions for East Hartford Conn. Mr. Mitchell went to England toward the end of 1915 and obtained a commission in the Royal Engineers. In France he won a captaincy and the M.C. He returned to Canada last June and has since been employed by Loudon & Hertzberg, consulting engineers, Toronto.

WILLIAM GEORGE SWAN has been appointed chief engineer of the Vancouver Harbor Commission. Mr. Swan recently returned from France, where he was in the army for nearly three years as major in a railway construction battalion. He is well known in British Columbia, as for some time prior to the war he was in charge of Canadian

Northern Railway construction in that province, with headquarters at New Westminster. He supervised the construction of the C.N.R.'s Pacific mainland terminals and the wharves at Port Mann, and designed the False Creek reclamation scheme. Mr. Swan is not related to A. D. Swan, of Montreal, who is consulting-engineer to the Vancouver Harbor Commission.

RUSSELL W. STOVEL, who was recently appointed consulting engineer on the staff of Westinghouse, Church, Kerr & Co., Inc., was born February 22nd, 1877, in Toronto, Ont. He attended Upper Canada College, Toronto, and Ridley College, St. Catharines, and graduated in 1897 as a gold medalist in electrical engineering, with the B.A.Sc. degree, at McGill University, Montreal. In 1900 he received the M.Sc. degree from McGill as a result of post-graduate work. In 1898 he went to the United States and joined the engineering staff of Westinghouse, Church, Kerr & Co., and all of his work since that date has been in the United States, excepting the design and construction of the C.P.R. passenger terminal and steamboat pier at Vancouver, B.C. Soon after entering the employ of W.C.K., Mr. Stovel became an assistant engineer, then successively engineer-in-charge, mechanical engineer, and managing-engineer of the company. He remained with W.C.K. from 1897 until 1914, when he resigned to become managing engineer for Gibbs & Hill, consulting engineers, New York City, for whom he took charge of the Paoli and Chestnut Hill electrification of the Pennsylvania Railroad, the Elkhorn grade electrification of the Norfolk & Western Ry., and the electrification of the New York Connecting Ry. In October, 1917, he enlisted in the United States army, and was assigned to duty in France with the chief engineer of the Transportation Service. In August, 1918, he was appointed electrical and mechanical engineer in charge of the Pier Utilities Branch, Terminal Facilities Division, and one month later he was designated chief of that division, with rank of lieutenant-colonel, and placed in charge of all French terminal facilities under the jurisdiction of the Army Transport Service. Lt.-Col. Stovel returned from France last November. His work with W.C.K. will be devoted entirely to electrical and mechanical problems. Among the outstanding construction jobs which he directed while with the company prior to 1914, in addition to the C.P.R. work above mentioned, were the following: Power plants for the Utah Light & Ry. Co., the Meriden Light & Ry. Co., the Edison Electric Illuminating Co., the Pennsylvania Railroad, the Wabash-Pittsburgh Terminal, and the New York, New Haven & Hartford Railroad; and machine shop for the Chicago Railway Equipment Co.



That the Walkerville Water Co., Ltd., be requested to take immediate steps toward the installation of a filtration plant, was a resolution carried at the last meeting of the Walkerville, Ont., council. The question arose on the receipt of notices of appeal by the city of Windsor and the township of Sandwich West against the appraisal of the Windsor water works, and the apportionment of credit by the Essex Utilities Commission.