

APPLES, FEEDS, FLOUR

On the spot and to arrive
300 BARRELS GRAVENSTEIN APPLES—1's and 2's.

1000 Bags Yellow Corn Meal.	500 Bags P.E.I. White Oats.
200 Bags White Hominy Feed.	500 Bags Canadian White Oats.
200 Bags Bran.	500 Bags Whole & Crushed Corn
100 Bags Gluten Feed.	400 Bags Full-O-Pep
	Poultry Feeds.
50 Barrels Fine Table Corn Meal.	

We carry in stock Best Brands of FLOUR, including
OUR OWN, VICTOR, WINDSOR PATENT, NATIVE, PILLSBURY
BEST.

MAIL ORDERS

receive our
Prompt Attention.

Ayre & Sons
LIMITED
STORE DEPT.

PLEASE REMEMBER

KIRKMAN'S BORAX SOAP

Wrapper Competition is now in full swing

SAVE THE WRAPPERS AND WIN A PRIZE

CLOSING DATE DEC. 16.

Ask Your Grocer For Particulars

Hall and Cooking Stoves

"VIKING" - HALL STOVES
"IDEAL QUEBEC" - " " "
"OUR OWN" - COOKING STOVES
"STAR STERLING" - " " "
"COTTAGE BEAVER" - " " "
"EMPIRE" - " " "
"MODERN ALASKA" - RANGES
"MONARCH" - " " "
"ENTERPRISE" PIPELESS FURNACES.

ALL ABOVE AT FINEST PRICES.

JOHN CLOUSTON
172-174, DUCKWORTH STREET.
Phone 406 P.O. Box E-5166

Advertise in The Evening Telegram.

On the Air To-Day

STATION WEAF.

Atwater Kent Artists.
Sunday, Oct. 11, 1925.
9.15 p.m.—Eastern Standard Time.
Toscha Seidel.

WPG ATLANTIC CITY.

Wave Length 390.5 Meters—Kilocycles 1000.
Saturday, Oct. 10, 1925.
1.30 p.m.—Hotel Morton Luncheon Music. J. Leonard Lewis, Director.
2.30 p.m.—World's Series Baseball game, play by play description from Hall Park.
6.45 p.m.—15-minute Organ Recital (Request Selections). Arthur Scott Brook, City Organist.
7.00 p.m.—Hotel Ambassador Dinner Music.
8.00 p.m.—Program to be announced.
9.00 p.m.—Chalfonte-Haddon Hall Evening Concert.
10.30 p.m.—Dance Orchestra, "The Silver Slipper."

STATION WOR.

L. Bamberger & Co., Newark, N.J.
405 Meters—740 Kilocycles.
(Eastern Daylight Saving Time.)
Saturday, Oct. 10th, 1925.
6.45 a.m.—Bernarr Macfadden's Early Bird Gym Class.
7.15 a.m.—Bernarr Macfadden's Vim and Vigor Gym Class.
7.45 a.m.—Bernarr Macfadden's Home Folks Gym Class.
2.00 p.m.—Play by play World Series; courtesy Newark Evening News.
6.15 p.m.—Words Often Mispronounced.
6.17 p.m.—Hotel Shelton Dinner Music.
7.05 p.m.—Talks by famous aviators.
7.15 p.m.—Bill Wathey of the New York Evening Telegram Staff in sports.
7.30 p.m.—Flo Richardson's Casino Orchestra.
8.00 p.m.—Mabelanna Corby presents: Mme. Alba Victor, violinist; Harriet Hubbard, soprano; Veronica Wiggin, contralto; Dr. Howard Applegate, baritone; Genevieve Applegate, accompanist.
8.45 p.m.—Dick and Flo Bernard—specialty songs.
9.00 p.m.—Arthur Baecht, violinist.
9.15 p.m.—Ida Twerdowsky, pianist.
9.30 p.m.—Ed Sabino, mandolinist.
9.45 p.m.—Dick and Flo Bernard—specialty songs.
10.00 p.m.—Arthur Baecht, violinist.
10.15 p.m.—Ida Twerdowsky, pianist.
10.30 p.m.—Ed Sabino, mandolinist.
10.45 p.m.—Earl Rossmann, explorer, camera-spondent—"Alaska."
11.00 p.m.—Eddie Elkins' Circo Orchestra.

CNRO (435 Metres), OTTAWA, ONT.

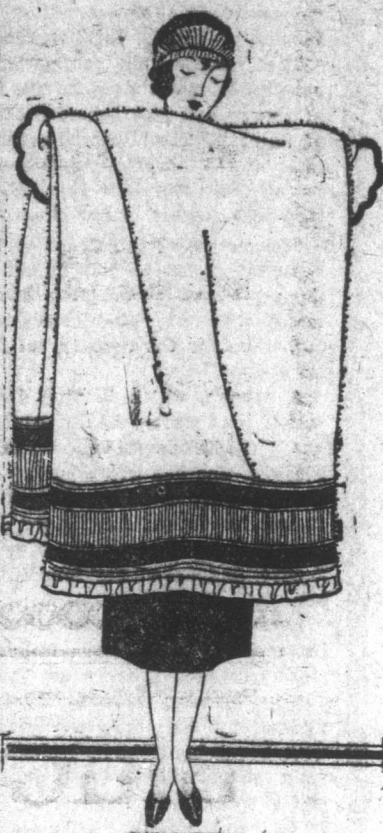
7.30 p.m. (E.S.T.)—Cosy Corner for Boys and Girls—Uncle Dick.
8.00 p.m.—Chateau Laurier Concert Orchestra, direct from Main Dining Room, Chateau Laurier Hotel.
9.00 p.m.—PROGRAMME.
1. Accordion Solo (a) Quartette from "Rigoletto," (b) "Bella Brannetta Polka," Mr. Tony Paladino.
2. Bass Solos (a) "The Storm Wind" (Rockel), (b) "We Met in Lover's Lane" (from "Dolly Varden") (Edwards)—Mr. Ernest Botten.
3. Cello Solos (a) "Priore" (W. H. Squire), (b) "Widmung" (David Popper)—Mde. Leda Gauthier Lund. Accompanist, Miss Queen Allan.
4. Soprano Solos (a) "Pulling the Sea Dulce" (Kennedy Fraser), (b) "Give Me Youth and a Day" (Drummond)—Mrs. J. D. Robertson.
5. Musical Monologues—"The Green Eye of the Yellow God" (Williams)—Mr. Kendall McNeil.
6. Tenor Solos (a) "Regulament" (Homer), (b) "If I Were Sure" (Doriel)—Mr. Geo. White.
7. Accordion Solos (a) "Beautiful Days Waltz," (b) "General Pershing March"—Mr. Tony Paladino.
8. Bass Solos (a) "The Skipper" (Jude), (b) "The Old Brigade" (Barri)—Mr. Ernest Botten.
9. Cello Solos (a) "Andante Sonate" (J. Beethoven), (b) "Adagio" (J. Hollman)—Mde. Leda Gauthier Lund. Accompanist, Miss Queen Allan.
10. Duo—"The Jovial Blacksmiths" (Gordon)—Messrs. Geo. White and Ernest Botten.
11. Soprano Solos (a) "Christina's Lament" (Dvorak), (b) "You've Got Your Mother's Eyes" (Drummond)—Mrs. J. D. Robertson.
12. Musical Monologues—"Slippery Elm" (Hitchcock)—Mr. Kendall McNeil.
13. Tenor Solos (a) "An Evenson" (Blumenthal), (b) "Lift Thine Eyes" (Knight Logan)—Mr. George White.
Chateau Laurier Dance Orchestra.

Migrating to Mexico

WINNIPEG, Man., Oct. 1.—The last batch of the German Mennonite colony which is migrating from Western Canada to Mexico, will be transferred to their new homes so soon as their holdings on the Prairies are disposed of, according to J. F. D. Wiebe, of Herbert, Sask., who is directing the "trek" from the Canadian end.
"Since we obtained the concessions in 1921, comprising 300,000 acres of land in Mexico, more than 5,000 German Mennonites, who are conscientious objectors, have settled in Mexico. They have received a fairly good crop this year and their stock operations have been successful," Mr. Wiebe declared.
The Mexican government, he added, has honored its side of the bargain and lived up to the terms of the concession. The newcomers were permitted to have their own schools and churches where the German language was spoken exclusively. The settlers were also permitted to manage their own internal affairs and are exempt from military service.
In Mr. Wiebe's opinion, the exodus from Canada hardly represents a loss in population. Incoming Russian Mennonites, he pointed out, were taking over the land.

Present and prospective buyers of Halifax-Marathon sweep tickets please open up and examine your tickets and help us reduce advertising by claiming prizes promptly. Unclaimed prizes published in this paper daily.—oct. 11

A SPECIAL SALE OF The Famous RIVERSIDE BLANKETS



Awarded Commemorative Medal at British Empire Exhibition Wembley, England

Now is The Time to Anticipate Your Blanket Needs

Every economical housewife should immediately check over her Blanket needs for the coming winter, for here are presented opportunities to save on BLANKETS that are known and noted all over Newfoundland for their wonderful wearing qualities, as well as their splendid appearance—RIVERSIDE BLANKETS. New, fresh assortments direct from the mill are offered at a substantial reduction from their former prices, so plan to supply your BLANKET needs during this Sale.

Union Wool Blankets.

These Blankets are 70 p.c. Wool and are guaranteed to give satisfaction. Ask to see them: you will be delighted with their splendid appearance and warmth giving quality.

Size 60 x 70.	Reg. \$ 6.05 pair.	Special Price . . . \$ 5.45
" 64 x 70.	Reg. \$ 7.60 pair.	Special Price . . . \$ 6.80
" 66 x 78.	Reg. \$ 9.10 pair.	Special Price . . . \$ 8.15
" 66 x 88.	Reg. \$10.50 pair.	Special Price . . . \$ 9.50
" 70 x 88.	Reg. \$12.10 pair.	Special Price . . . \$10.90

All Wool Blankets.

These are guaranteed pure Wool and are recommended for their wonderful wearing qualities. Weigh them, measure them, poke your thumbs into their heat-holding depths, and you will agree with us that there isn't a better Blanket made at any price.

Size 40 x 48.	Reg. \$ 5.45 pair.	Special Price . . . \$ 4.95
" 54 x 70.	Reg. \$ 9.10 pair.	Special Price . . . \$ 8.15
" 60 x 78.	Reg. \$10.95 pair.	Special Price . . . \$ 9.50
" 66 x 88.	Reg. \$12.70 pair.	Special Price . . . \$11.25
" 70 x 88.	Reg. \$14.50 pair.	Special Price . . . \$12.90
" 62 x 85.	Reg. \$15.45 pair.	Special Price . . . \$12.75
" 75 x 90.	Reg. \$18.40 pair.	Special Price . . . \$16.25
" 84 x 90.	Reg. \$19.50 pair.	Special Price . . . \$17.75

When Winter Comes this Sale of Blankets will be gratefully remembered by the wise housekeeper, both for the adequate supply of fine, warm Blankets she has provided and the substantial economy they represent. MAIL ORDERS FOR THESE BLANKETS WILL RECEIVE PROMPT AND CAREFUL ATTENTION.

THE ROYAL STORES, Limited

SHOP AT MILLEY'S OUR NANETTE

JAUNTY VELOUR HATS

SEE WINDOW

With cut brims and soft crowns, trimmed with matched shades of corded ribbon. In shades favoured for Fall Sports apparel \$3.98

NELLY KELLY SPORT HATS \$1.49	PETER-PAN HATS FOR GIRLS \$1.75	ROSE MARIE This Season's Smart Felts. The new shades. \$1.98
---	---	--

S. MILLEY, Ltd.

CORNS
Rub them frequently with Minard's and get speedy relief.

MINARD'S LINIMENT
"KING OF PAIN"

Don't Say Paper, Say "Evening Telegram."