

a pulp mill at Clu's Cove, near  
am, N. B., is progressing favorably.  
W. Wilson, paper manufacturer, of  
real, has applied for lease of certain  
property at Indian Lorette, Que., on which  
will a pulp mill.

ald Fraser & Sons, of Fredericton,  
announce their intention of erecting  
pulp mill adjoining saw mill at  
no, on Temiscouata Lake, Quebec.

new pulp wood in, with head.  
ers at Roberval, Lake St. John, Que  
been formed, with capital of \$30,000.  
Vellermund, A. C. Piquet, and others,  
Quebec city, are interested.

de Sault Ste. Marie Pulp & Paper  
pany, of Sault Ste. Marie, Ont., have  
anted Messrs. John Hudson & Com-  
y, 60 Mark Lane, London, E. C., sole  
agents in Great Britain for the sale of their

the site is being cleared for the erection  
ebwood, Ont., of the proposed pulp  
of the Spanish River Pulp Company,  
ough work on the dam, mill and canal  
not likely be commenced until next

negotiations are in progress for the  
lease by Messrs. H. K. Egan and  
C. Edwards, M. P., of the Table  
water power owned by the Hull  
ber Company, at Hull. The water is  
able of developing 5,000 horse power,  
it is said to be the intention to build  
large pulp mill.

number of English capitalists are ex-  
pected to arrive in Canada shortly to make  
investigation of some pulp wood pro-  
jects. A representative of these capital-  
called upon Mr. Johnson, Dominion

Statistician at Ottawa, a few days ago.  
Mr. Johnson advised his interviewer to  
have the capitalists explore the Moise  
river basin, in north-eastern Quebec, which  
is reported to be a dense forest of spruce  
timber.

An American syndicate is considering  
the erection of a large pulp mill at Fort  
Frances, on the Rainy river, a town which  
will soon be connected with Winnipeg by  
rail. J. T. Fanning & Son, civil engineers,  
of Minneapolis, recently made a survey  
of the falls in connection with the pro-  
ject.

The Belgo-Canadian Pulp & Paper Cor-  
poration, of which Messrs. Edmond de  
Vialder and Herman Cortmet, of Brussels,  
are the principal shareholders, have just  
completed arrangements to establish at  
Shawinigan Falls, Que., a 100 ton ground  
wood pulp mill, and have contracted with  
the Shawinigan Water & Power Company  
for 15,000 horse power. They have pur-  
chased over 700 square miles of heavily  
timbered spruce lands on the St. Maurice  
river. The company's engineer is Mr.  
A. C. Rice, of Worcester, Mass.

PLANS, ESTIMATES. SUPERVISION AND CONTRACTS.

**Chas. H. Vogel**  
MILL ARCHITECT AND ENGINEER

—THOROLD, ONT.

SPECIALTIES:

Paper, Pulp and Sulphite Fibre Mills.  
Electric Plants.  
Surveys and Improvement of Water Power.

Many Years Experience. References on Application.

## POWER & WALLACE

ASHLEY B. TOWER, M. Am. Soc. C.E.  
CONSULTING ENGINEER.

MUTUAL RESERVE BUILDING,  
Midway and Duane St. - NEW YORK.

## RAILS FOR TRAMWAYS

NEW AND SECOND-HAND STEEL AND  
iron rails for tramways and logging lines, from  
1/2" per yard and upwards; estimates given for  
work on site.

JOHN J. GARTSHORE,  
83 Front St. West, Toronto.

ANADIAN OFFICE & SCHOOL FURNITURE  
CO. LIMITED  
PRESTON  
ONT.  
OFFICE, SCHOOL,  
CHURCH, ALCOHOL, SUNDRIES  
FURNITURE, ETC.  
SEND FOR CATALOGUE

## ARCHITECTS AND ENGINEERS

PAPER AND PULP MILLS

MANUFACTURING AND

POWER DEVELOPMENTS



Sole Canadian Agents Prices Reduced.  
WATERLOO, BRANTFORD, CANADA.

## JOHN BERTRAM & SONS

DUNDAS, ONT.

MANUFACTURERS OF

## PAPER MACHINERY

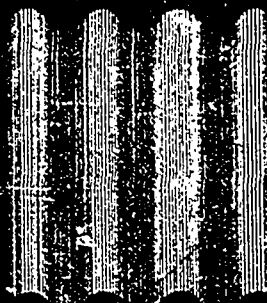
Cylinder Moulds  
Wet Machines

Cutters  
Dryers

~ ~ ~ CORRESPONDENCE SOLICITED ~ ~ ~

## THE METALLIC ROOFING COMPANY LIMITED

CORRUGATED



IRON

TORONTO, CANADA.

## Good Reasons Why OUR CORRUGATED IRON

Is preferred by those who know.

We use only best Apollo or English sheets.

The corrugations are pressed one at a time—not rolled—fitting perfectly, both at ends and sides without waste.

No scale, pin holes or other defects are ever found in our goods.

The galvanized sheets are coated on both sides with all the galvanizing material that can adhere to them.

The painted sheets are coated on both sides with Sherwin-Williams best quality paint.

We furnish any size or gauge required—either curved or straight.

If you desire durable quality and certain economical satisfaction, send us your specifications or write for further information.

## PULP AND PAPER MILL MACHINERY.

CONTRACTORS FOR COMPLETE EQUIPMENT OF

GROUND WOOD, SODA or SULPHITE PULP MILLS.

We invite correspondence from those requiring anything of this nature. We build a full line of

Barkers, Chippers, Tanks,

Digesters, Pumps,

Jewell Filters, Conveying

Machinery, Wet Presses,

Screens, Screen Plates,

Etc., Etc.

OUR CROCKER TURBINE PLANTS are driving some of the best mills in the Dominion.

Write for Circulars and Prices.

The JENCKES MACHINE COMPANY.



## THE PORT HENRY PULP GRINDER.

With latest improvements, patented 1898.

Operation continuous and production large.

Most convenient in handling and thoroughly well built.

Ask for special bulletin No. 505.

Branch Offices:

MONTREAL, TORONTO, RAT PORTAGE ONT  
ROSSLAND, B.C.

Head Office and Works

36 to 40 LANSLOWNE ST

SHERBROOKE, QUE