



EDWINA POLONAISE.

A handsome design for a polonaise is represented in this illustration. The drapery is effective and dressy, and it is adapted to silk or woollen goods, and equally suitable for any of the fancy dress goods used for spring and summer wear. The polonaise is tight-fitting, and the front is slightly double-breasted and buttoned straight down to a little below the waist-line, where there is an extension on which the buttons are continued to within a few inches of the bottom. Ample fulness is imparted to the back by an extension which is allowed to fall in a burnous plait on the outside. When the burnous plait is lined with a pretty contrasting material it adds to the dressy and stylish effect of the back. Price of patterns, thirty cents each size.



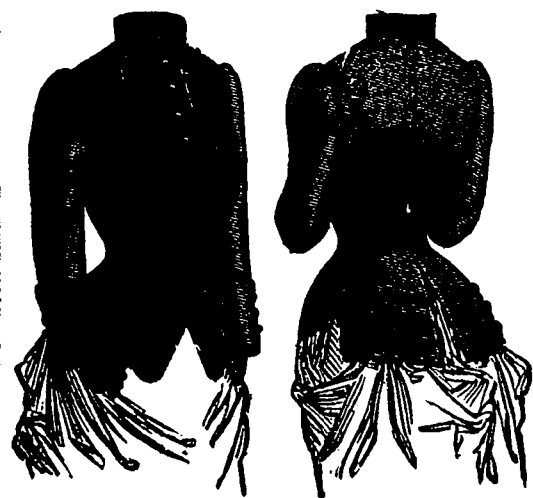
DELPHIA REDINGOTE.

For travelling, driving, and general wear, this is a most stylish as well as simple and convenient garment. It is tight-fitting, with two darts in each front in the usual places and one under the arm, while the back is cut with side forms and laid in plaits which overlay slightly at the waist line. The shoulder capes constitute a pretty feature of the design, and are fitted on the shoulder by gathers, giving a moderately high effect; they may, however, be omitted without detracting from the stylish effect of the whole. Coat sleeves and a rolling collar complete the model, which is suitable for cloths of all varieties not too heavy to lie nicely in the folds of the plaits. It is particularly appropriate for Cheviots, camel's-hair cloths, and the numerous fancy cloakings so fashionable for early spring and summer wear. The finish is machine stitching neatly and accurately made, or it may be plainly under-faced or nicely bound. Price of patterns, thirty cents each size.



BERNETTE COSTUME.

Composed of a tight-fitting, double-breasted polonaise, draped over a walking skirt trimmed with three deep bias bands of velvet, this stylish costume is adapted for almost any dress material in vogue. The double-breasted portion is joined to the front in a seam, and may be omitted if preferred. The polonaise is fitted with the usual number of darts in front, a deep dart taken out under each arm, side forms rounding to the armholes, and a seam down the middle of the back. The side forms and back pieces are cut quite short, and the drapery is put on in a separate breadth. Any other trimming may be substituted for the velvet, according to taste and the fabric employed for the costume. Price of patterns, thirty cents each size.



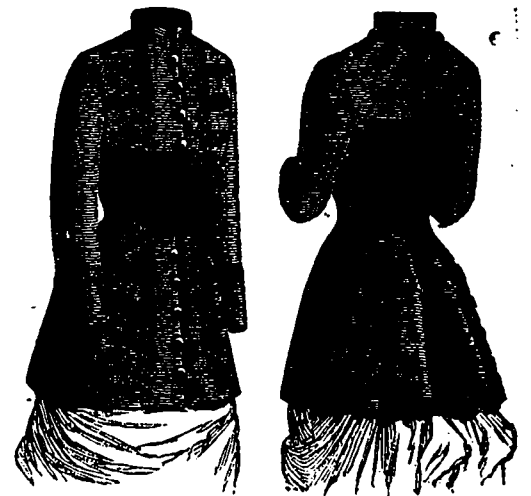
LILITH BASQUE.]

Simple and practical, this stylish basque is tight-fitting and opened in front over a pointed vest, the revers imparting a military effect. It is fitted with the usual number of darts in front, side gores under the arms, side forms rounding to the armholes, and a seam down the middle of the back. A standing collar and close-fitting sleeves complete the design, which is suitable for almost any class of dress goods. The vest may be of a contrasting material if desired, and the garniture may be rows of "Kursheedt's Standard" braids, velvet ribbon, or whatever corresponds well with the goods selected. Price of patterns twenty-five cents each size.



WALKING COSTUME.

A practical and easily arranged design, which can be worn either as a dress or a coat. It is a simple gabrielle shape, not quite tight-fitting, and cut short with the requisite length furnished by a kilt-plaited skirt sewed to the lower edge. The fronts are fitted by a single dart in each, it has side forms rounding to the armholes, and a seam down the middle of the back. The cape is fitted by small gores on the shoulders, and trimmed with a plaiting to match the dress. Coat sleeves and a turn-down collar complete the design, which can be made up in any of the materials usually chosen for children's costumes, the addition of the cape rendering it suitable for the street. If made of cloth it becomes a serviceable coat, for which machine stitching forms an appropriate finish. Patterns in sizes for from six to ten years. Price twenty-five cents each.



LILIAS JACKET.

Particularly pleasing and stylish in effect, the simplicity of this design makes it a most desirable model. It is tight-fitting, with a single dart in each front and side gores under the arms, and additional fullness is imparted to the back by broad box-plaits laid in the skirt. The pattern is suitable for cloths and similar goods that are chosen for out-door garments, and is also desirable for many classes of dress goods. "Kursheedt's Standard" soutache and wide mohair braids form the most effective garniture for woollen fabrics. These come in all widths and can be relied upon for durability and perfection of finish. Patterns of jacket in sizes for from ten to fourteen years. Price, twenty cents each.