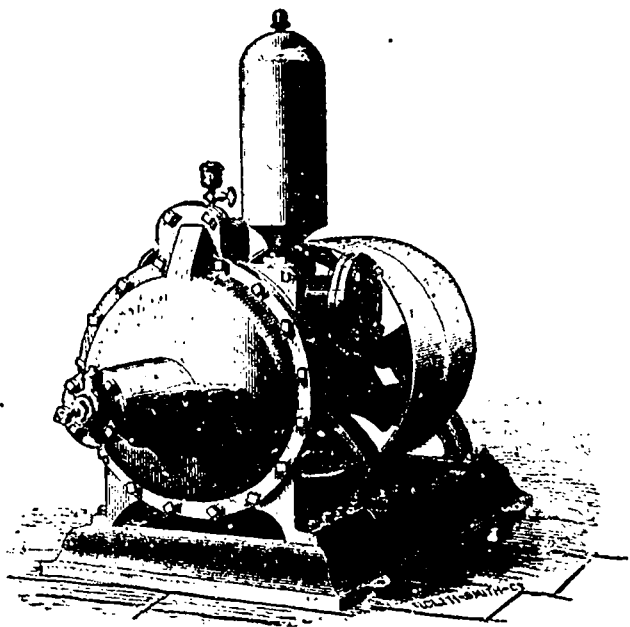


# Central Iron Works

SIMCOE STREET

PETERBOROUGH, Ontario.

WM. H. LAW, PROP'R.



## PROTECTION FROM FIRE

An Improved Rotary Piston Force Pump.

No.	Diameter of Pipes.		No. of Revolutions.	Capacity per minute at table speed.	Price.
	Suction.	Discharge.			
2	2½ in.	2 inch.	250	125	\$100
3	4 "	3 "	250	250	150
4	5 "	4 "	250	400	225

SEND FOR CIRCULAR.

MANUFACTURER OF

Engines, Boilers, Pumps, Saw Mill Machinery

STEAMBOAT PROPELLERS AND ENGINES.

# C A S T I N G S

For Architectural Works. &c.

# IRON ROOFING AND BRIDGES,

AND ENGINEERING WORK IN GENERAL.

A FULL LINE of all Sizes Single and Double Belting constantly in stock.

ALL ORDERS Filled same day as received.



## TORONTO

WAREROOMS

86 King Street East

Factory and Warerooms:—2518, 2520 and 2522, Notre Dame Street.

MONTREAL, QUE.

# GRAY NO MORE HAIR.

Grayline; the Great Hair Restorer and Renewer, changes gray hair to its natural color gradually and permanently. Not a dye. A marvellous invention. Gray-haired persons, old men and old women made to look young in three weeks. No more gray hair. Also grows hair rapidly and luxuriantly. Send for descriptive book, and testimonials and opinions of eminent chemists and doctors, etc., who recommend it highly. Address, J. H. NICHOLSON, 7 Murray St., New York d64w884

## NATIONAL PUMP WORKS.

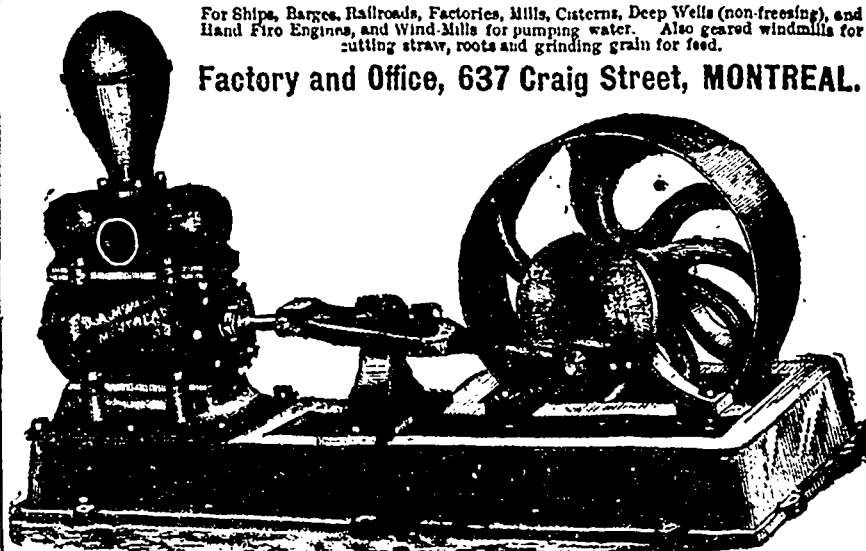
J. A. McMARTIN & CO.

SOLE MANUFACTURER OF THE

McMartin Patent Double and Single Acting Lift and Force Pumps

For Ships, Barges, Railroads, Factories, Mills, Cisterns, Deep Wells (non-freezing), and Hand Fire Engines, and Wind Mills for pumping water. Also geared windmills for cutting straw, roots and grinding grain for feed.

Factory and Office, 637 Craig Street, MONTREAL.



The above cut shows our Double Acting Brass-Lined Horizontal Suction and Force Pump, mounted on a Cast Iron Bed Plate with tight and loose pulleys. 4 inch face, 18 inch diameter. This is one of the most compact and powerful pumps of the kind yet out, with bed 4 feet long and 2 feet 2 inches where the pulleys are placed, all being in good proportion. The pump has a guide to the piston rod, and is driven by the connection rod attached to the disc with steel pin and wrought iron connections. The valve seats and valve are made of gun metal, and easily got at by bolts on either side of the pump, so that access to the bottom or top valve can be had without any difficulty. We make two sizes of these pumps, which are adapted for mills, factories or tanneries. We make these pumps with a clutch to drive them direct, when so ordered, and dispose of the pulleys and belt. All enquiries will be promptly answered, by addressing the above, and catalogues of our pumps sent out.

For Neat and Artistic Job Printing, try

# The Review Job Department.