

Vermilion, the Garden of Saskatchewan Valley

VERMILION.

The great Saskatchewan valley, which is the pride of Western Canada, can scarcely be said to comply with the mathematical axiom that the whole is equal to the sum of its parts. There are so many tributary valleys to the Saskatchewan, and these so rival one another in their beauty and their great fertility that the whole is completely submerged and humiliated in the contemplation of its parts.

The valleys of the Vermilion river, which is tributary to the Saskatchewan, creates some such impression on the unprejudiced visitor. In days gone by it must have been the favorite haunt of the buffalo and the never-

many miles. He was formerly a heavy cattle shipper at Strathcona, and looked eastward ten years ago. He established his ranch on the wildness he and his faithful wife experienced hardships of which modern ranchers know nothing. During his second year on the ranch Mrs. Powell rode a saddle horse 150 miles to Edmonton and secured a doctor, who saved the good woman's life. The third prosperous rancher is Hugh B. Evans, who was formerly in the cattle business at Fort Saskatchewan. He took the Vermilion trail three years before railway facilities were scarcely

settlers are applying for phone service to the most central locations, by lines run in conjunction with the provincial telephone lines now in existence from Edmonton to Lloydminster.

A Great Stock Country.

The Vermilion district will always be a great stock country, but will not be a county of big ranches. The land is too valuable for that. At present, 15,000 head of cattle are being raised throughout the district by the government agent. There is scarcely any comparison between the acreage this year and last, so great has been the increase in the grain area. Last year the Vermilion valley was credited with a yield of 50 bushels of wheat and 100 bushels of oats to the acre.

With a red and chocolate clay sub-soil. "During the past year," continued Mr. Bowtell, "such progress had been made by the homesteaders on their lands that there was a great demand for government seed grain to enable the farmers to do their seeding. All told, 15,000 bushels of this grain were distributed throughout the district by the government agent. There is scarcely any comparison between the acreage this year and last, so great has been the increase in the grain area. Last year the Vermilion valley was credited with a yield of 50 bushels of wheat and 100 bushels of oats to the acre.

getting close to nature and far from the haunts of man.

The Town Itself. "Two years from the grass roots" is a term which Editor Cameron, of the Vermilion Signal, has coined for Vermilion. The term shows originality by avoiding the familiar vocabulary in describing the growth of a town. Northern main line swerved into the Vermilion valley. It was soon designated as the divisional point for the railway yards and the erection of a ten-story roundhouse and tank followed. Surveyors laid out the townsite, and soon a line of general stores and real estate offices indicated the location of main street.

Significant Situation.

The situation of the town is significant. A range of low hills land it on the south and the broad deep valley of the Vermilion on the north. The intervening space is a high level plateau carpeted at intervals with thick green grass and wild flowers and treated with heavy peat bogs where the prairie dips to the valley. The bank of the river flows with fresh spring water, while the slope of the town to the river gives a natural drainage. However, the position which the town occupies in the district is more important than its location on the river. With Vermilion as the centre, a circle may be drawn with a forty mile radius and of this immensely fertile district Vermilion is the bull's-eye. When it has become expedient to divide Alberta into counties, as in the older provinces, Vermilion will undoubtedly be elected as a county town. This means that administrative buildings will be built, with offices for the county officials, and added prominence will be given the place as the leading town in the east-central part of the province.

Municipal Officers. Within less than a year after its birth Vermilion acquired the important status of an incorporated town. The present municipal officers are Mayor Brimacombe and Councilors Dr. G. H. W. Ryan, H. W. Stephens, W. B. Cameron, W. J. MacNab, H. W. Brown and O. Baker. The Board of Trade, which was formed in February, 1906, has H. N. Stephens as president and W. B. Cameron, secretary-treasurer.

Railway Facilities.

Few towns in Alberta have a better right by virtue of their position to speculate on their future railway accommodation than Vermilion. Its location, the character of the country surrounding it, the fact of it already being a C.N.R. divisional point and the certainty that other lines will wish to compete for a share of the business of the district, justify such aspirations. A branch line of the Canadian Northern Railway will connect Vermilion with Saskatchewan on the line from the city of Edmonton to the Hudson Bay route to Great Britain. Another will run south to Calgary, tapping the rich coal fields of the Knudsen district. A third line is projected northward and will make tributary to Vermilion the extensive spruce and tamarac forests lying north of the Saskatchewan river. The Grand Trunk Pacific runs a few miles south of Vermilion, and at a distance of a few miles further the Canadian Pacific line from Saskatoon to Wetaskiwin is also building. With the Hudson Bay route to Great Britain looming up prominently, Vermilion will some day be on the main line of a road having terminals on Hudson Bay and the Pacific ocean.

Rising Industries.

The good citizens of Vermilion look with pride on their rising industries. In the west end of the town there is a portentious brick yard managed by F. Buckle. Mr. Buckle manufactures a splendid quality of No. 1 pressed brick. On the river bank, a model cannery is being erected, which will encourage settlers to develop a profitable industry. At the present time an electrical company is negotiating to put an electric plant in the town and an agreement will probably soon be arranged.

The Public Buildings.

Vermilion derives its spiritual uplift from four churches while the town is still less than three years old. Last year plans were called for the erection of a public school building at a cost of \$25,000 and an additional appropriation of \$5,000 has been made. The Dominion Land Office, in charge of Mr. Harry Bowtell, has greatly facilitated the placing of homestead entries. While visiting Vermilion last fall Hon. Frank Oliver, minister of the Interior, saw the need of a government immigration building, and a suitable one has since been erected by the department.

The People.

The population of the district consists almost entirely of English-speaking people who have emigrated from the eastern provinces, Great Britain and the western and middle States.

Inexhaustible Water Supply.

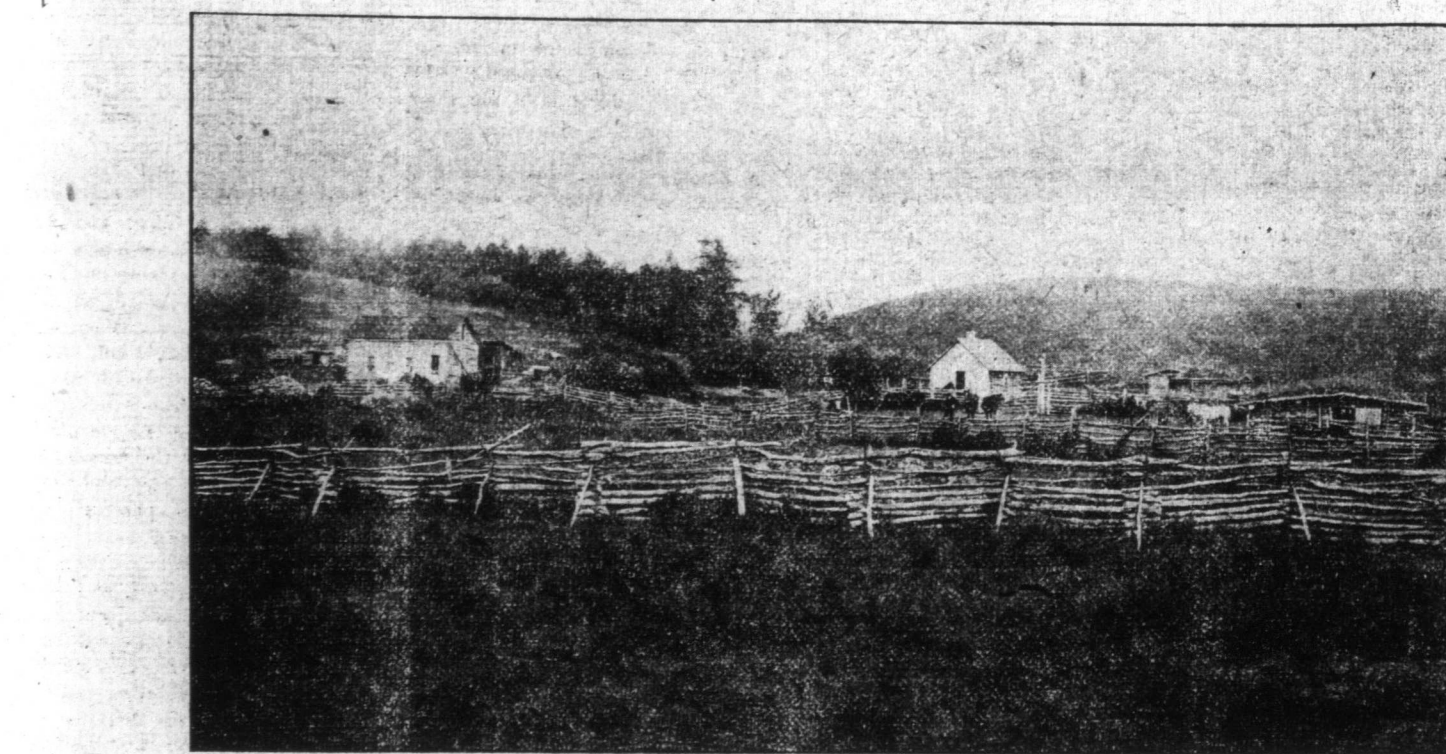
The Vermilion valley for a considerable extent is crossed by the Grizzly Bear and Buffalo Coulees, which are tributary to the Red river. These streams run with living water, which affords the district an abundance of fresh water for stock. On land not crossed by these streams water can be had by digging at from 10 to 25 feet below the surface. Where water abounds there is prolific vegetation. The grass grows tall and strong and there is an abundance of peavine and rye. The same description applies to the Moose Lake district, from where a ferry across the Saskatchewan will open a direct route to Vermilion.

Timber Areas.

The district is dotted by bunches of timber averaging about 60 to 80 acres to the section. Much of the standing timber is from two to twelve inches in diameter and affords the settlers a means for building without having to purchase material from lumber yards. As coal is everywhere abundant along the Saskatchewan River it should also mean cheap fuel for this district.

Abundance of Game.

The country is a veritable paradise for the sportsman. The accompanying shows the return of the hunters with the spoils, which are rather too easily obtained. The lakes are the haunts of ducks and wild geese, which make these their hatching quarters, while hares, deer, partridges and prairie hens add to the variety of game. The innumerable little lakes in fifteen minutes more fish could be caught than could be carried away in a day. Trout have been caught in Cold Lake weighing 60 lb. A westerner who has made considerable money, is reported to have gone to live on the border of one of these lakes with his five daughters and two sons, with the express purpose of



George Powell's Ranch, Vermilion Valley.

failing hunting ground of the western aborigines. The buffalo and the Indian has disappeared to make way for the rancher in search of fertile pasture lands for his flocks and herds. The Vermilion valley was difficult of access in the old tracking days, but few who visited the valley passed it by. Here loneliness of the prairie and the sheep and cattle in the juicy grass of the flats and of the uplands, and companionship for man in the running water, the songs of the birds and the undulating plains.

The Early Settlers.

In the vicinity of what is now the town of Vermilion there are many of the pioneer ranchers of this district. C. W. Robinson was on the ground before the C.N.R. reached the town section 14 township 51 range 6. He came from Port Arthur some 25 years ago with not more than \$400 in his name, and today he has 75 acres of land under cultivation, 25 head of cattle, 10 work-horses and all the conveniences for mixed farming.

Michael Sullivan came along with Mr. Robinson, and today is a very successful rancher. He lives on his ranch at Sullivan Lake, four miles out from Vermilion. He arrived with 25 head of cattle and a few hundred dollars in cash. Today he has 100 head of stock and 120 acres of land under cultivation. His buildings are thoroughly up-to-date and he is happy. Others in this vicinity who have made rapid progress in raising live stock are Charles Davis and M. Pedersen, who came east from Fort Saskatchewan. North and east, in the Campbell Lake district, are the Sumner Brothers, Darling & Son, and Harman. These men with little and today have flourishing stock farms. Other prominent farmers are to be found in the Dewberry district, which comprises townships 53 and 54 range 4 and twenty miles northeast of Vermilion. Here are E. Sweet, who is a country merchant and postmaster, Messrs. Blair & Sons, F. Clarke, A. Brett and W. Wilson.

Three Pioneers.

Coming closer to Vermilion and within a radius of three miles are three well known ranches who have staked their claim before the town dotted the horizon. James Cummins came from the Western States several years ago, with some experience in the stock business. He was attracted to this district solely by the great natural advantages which it offers as a farming district.

Further east along the hay flats of the river lives George Powell, who was the first settler within a radius of

Coming of the C.N.R.

Meanwhile the C.N.R. was sweeping westward from Winnipeg and following the humble tracks of the settlers. The line headed for the Vermilion valley and gave birth to the town of the same name. The town was made a divisional point on the railway and began to grow. The advent of the iron steed, which continued on to Edmonton, opened the way for new homesteaders in the valley. Three years ago the district between Vermilion and the G.T.P. grade, a distance of forty miles, was not peopled by more than a dozen settlers.

Castle to the Markets at Winnipeg and Chicago.

Over two years ago a similar shipment was pronounced the first lot of beef cattle ever put on the Winnipeg market, and the present shipment was thought to be not far behind it.

The Nature of the Soil.

The land lying south of the Ver-

Vegetables and Fruits.

Vegetables of all kinds are successfully raised, including potatoes, turnips, carrots, beets, parsnips, cabbage, celery, peas, pumpkins and tomatoes. Small fruits grow wild in abundance and include strawberries, raspberries, gooseberries, currants, cranberries (high and low bush), plums, cherries, Saskatoon berries and numerous other varieties. Most of these are also cultivated. Experiments in the growing of apples have been attended with such encouraging results that it is believed to be only a question of time until thriving orchards are found scattered over the country.



Campbell Lake—A Vermilion Beauty Spot.

While today there are on an average of no more than six homesteads available in the township. There is, however, any amount of available land bordering on the Saskatchewan north of that river. This great section will eventually be tapped by a railway, for at present there is a rumor of a line shortly to begin at Prince Albert, parallel the Saskatchewan in a westerly direction, touch on Moose Lake and Lac La Poudre and terminate either at Edmonton or Athabasca Landing.

Local Improvements.

The settlers are making marked progress as a general rule. The local improvement committees looking to the building of roads, fences and the building of the erection of suitable school houses. Already a number of



A Vermilion Game Bag.

Dairy Butter

The demand for gilt edge dairy butter is greater today than at any time in the history of Alberta.

Why not get into direct touch with this market which affords a steady demand at top prices? You cannot spare the time to personally look up the business, but we offer you an excellent silent salesman.

We will supply you with the best quality Butter Parchment Wrappers printed in blue, black or brown ink at the following prices:

500 wrappers,	\$2.25
1000 wrappers,	3.00
2000 wrappers,	4.25

Delivered as you require. Cash must accompany order. Mail orders promptly filled.

The Bulletin Co., Limited

Edmonton, Alberta

NOTICE TO CREDITORS, NEXT OF KIN, LEGATEES, DEVISEES AND OTHER CLAIMANTS AGAINST THE ESTATE OF PETE MATTON—DECEASED.

NOTICE IS HEREBY GIVEN by virtue of an order of His Honor Judge Taylor, dated the 22nd day of May, A.D. 1908, that the creditors and other persons having claims against the estate of the said Pete Matton, deceased, are to send in their names and addresses and the particulars of their claims, together with a statement of their securities (if any) held by them, verifying the same by Statutory Declaration, and the names and addresses of their Solicitors (if any) to Messrs. Emery, Newell & Bolton, Edmonton, Alberta, Solicitors for the estate of the said deceased, before the expiration of seven weeks from the first publication of this notice, as noted hereunder.

AND TAKE NOTICE that after the expiration of the said period the Administrator will be at liberty to distribute the assets of the said deceased, or any part thereof amongst the parties entitled thereto, having regard only to the claims of which he has then notice.

Dated this 3rd day of June, A.D. 1908.

EMERY, NEWELL & BOLTON, Solicitors for the Administrator.

First Publication of this Notice the fifth day of June, A.D. 1908.

J. G. TURRIF IN WEYBURN.

Member For East Assiniboia Deals With Questions of Day.

Weyburn, June 7.—Despite the dripping rain a large number of citizens and farmers gathered in Hunt's hall last evening and listened attentively to an address of two hours' duration given by J. G. Turriff, Federal representative of East Assiniboia and candidate for the new electoral district of Assiniboia. Mr. Turriff was in fine form, and in clear-cut, forceful manner dealt with various questions of the day, especially the matters of particular interest to citizens of Western Canada and cleared away all doubt even in the minds of the most skeptical as to the justice of the stand he has taken during the past four years.

Personal charges made against him in connection with the disposition of the crown timber lands received special attention, and his slanderous remarks were shown one instance where misadministration of office could be proven. The obstruction policy of the Opposition, the non-existence of a closure act in the House of Commons, the Ayresworth bill, improved transportation facilities as will soon be afforded by the Grand Trunk Pacific, and the proposed early construction of the Hudson's Bay road, each in turn were dealt with exhaustively.

Chemical Works Explosion.

Montreal, June 7.—The works of the Standard Chemical Co. at Le Perrot, Que., where eleven men were killed last February by an explosion, was the scene of another fatal disaster yesterday, two men being killed when the building where sawdust and charcoal are mixed was blown up. Their names are G. Sagala and Armand Robillard.



Fat Frank From the Vermilion Ranges—The Best Steers Ever Put on the Winnipeg Market.