

## WE FEATURE THE MONO-VAC

An Electric Vacuum Washer of Proven  
Efficiency at a Sales-making Price

**A Maxwell Product**

Made in Canada

Features that make the  
Mono-Vac exceptional

- Single large vacuum cup of aluminum.
- Adjustable to size of washing.
- Heavy cypress tub, holds heat instead of radiating it as with metal.
- Driving gears under tub promote stability; all fully protected.
- Adjustable fourth leg, for uneven floors and draining off.
- Swinging, reversible quick-release wringer.

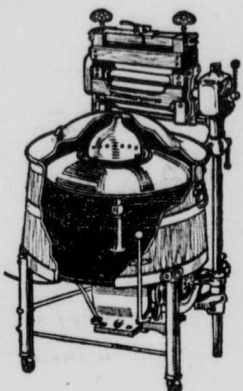
Real Value \$135

SOLD BY

Greene Bros.

Phone 146

Waterdown



We have been instructed to accept subscriptions  
for the

**Family Herald and Weekly Star**

At 75c for balance of 1923

This rate applies to New Subscribers only

## Say It with Flowers

### Cut Flowers

Violets Sweet Peas Begonias  
Daffodils Hyacinths  
Cineraria Tulips Calla Lillies

**The Sawell Greenhouses**

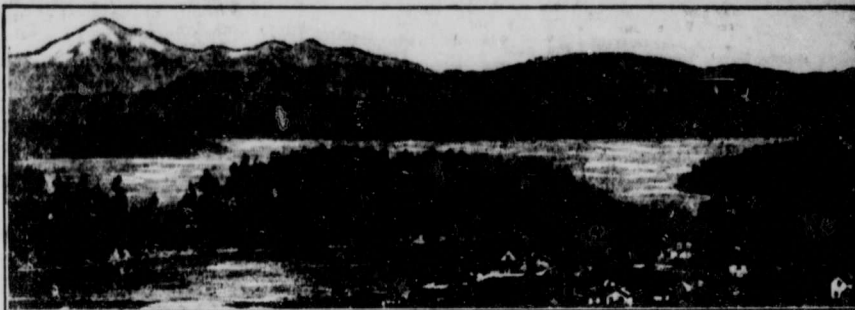
**GREENE BROS.**

Electric Supplies

Phone 146

Waterdown

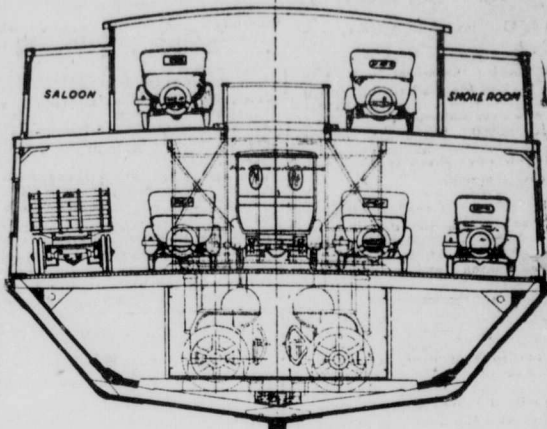
## BY AUTO ON THE GULF OF GEORGIA



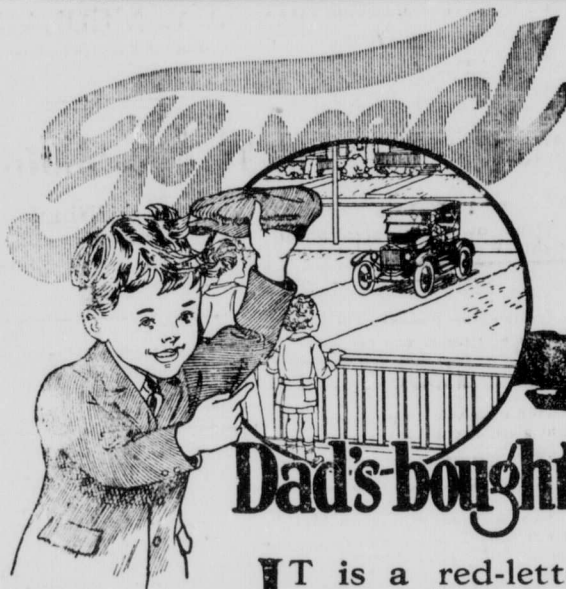
WHO has not heard of the thousand isles of the Gulf of Georgia? This Gulf is a ramification of the great strait of Juan de Fuca famed in legend and history, through which the Spanish navigators sailed hundreds of years ago, and which is now one of the important trade routes of the world. It separates Vancouver Island from the mainland of British Columbia and the State of Washington, and is one of the most beautiful waterways known to man.

The city of Victoria, at the extreme south end of Vancouver Island, has several ferry lines connecting it with the mainland, but as the steamship services in the past have proved inadequate for the large crowds of summer visitors and motor tourists, the Canadian Pacific Railway Company has put into service a fast-going vessel which operates twice daily between Victoria and Bellingham, Washington. The ferry is an important addition to the Canadian Pacific fleet and its name, "Motor Princess," is appropriate in that it is the first vessel of the company, operating on the Pacific, to be equipped with internal combustion engines. These engines give the boat a speed of about fourteen knots. On the two main decks there is parking space for fifty automobiles, and there is well appointed accommodation for two hundred and fifty passengers, saloon, restaurant,

An inspiring vista of the west coast Archipelago.



Sectional view of the "Motor Princess" showing method of stowing cars. The route travelled by the ferry is marked by islands, some of them many miles in extent, others gem-like little islets which make the waterway a succession of magnificent pictures. The traveller is further entranced by the magnificent view of Mount Baker standing garbed in its everlasting mantle of snow among its satellites the foothills. This lordly mountain is on the mainland near Bellingham, and, beautiful and inspiring, it is seen at its best when travelling to or from Victoria.



**Dad's bought a Ford!**

IT is a red-letter day for the whole family when Dad drives home with a Ford.

Any family of moderate means can now own a Ford.

The price, \$445 (freight and government taxes extra) for the touring car, places it within the reach of all.

The generous terms upon which Ford Dealers are selling, makes it easy to own a Ford.

Buy your Ford today—easy terms can be arranged with your dealer if you desire.

**Thomas E. McKeen**  
WATERDOWN, ONTARIO

BUY NOW AND MAKE CERTAIN YOU GET A CAR AT THESE PRICES	
Runabout	\$405
Touring	\$445
Coupe	\$695
Sedan	\$785
Chassis	\$345
Truck Chassis	\$495

FOR FORD, ONT. GOVT. TAXES EXTRA  
STANDARD EQUIPMENT ON  
SEDAN AND COUPE

"GETWUNTOO"

FORD MOTOR COMPANY OF CANADA, LIMITED, FORD, ONT.