

New G. T. R. Shops, Stratford

The accompanying illustration shows the general layout for the new shops for the Grand Trunk Railway at Stratford, and is a typical example of the character of the improvements be-

eated in the foreground, are now under construction, and are being rushed as fast as possible in the hope of having fifteen bents under cover and in operation this winter. The above

the store house, 60 by 200 feet; the blacksmith shop, 100 by 300 feet; the power house, 90 by 90 feet, and the foundry, 110 by 140 feet. The construction of these buildings will follow in order of their importance and needs after the machine and erecting shop is well under way and the wea-

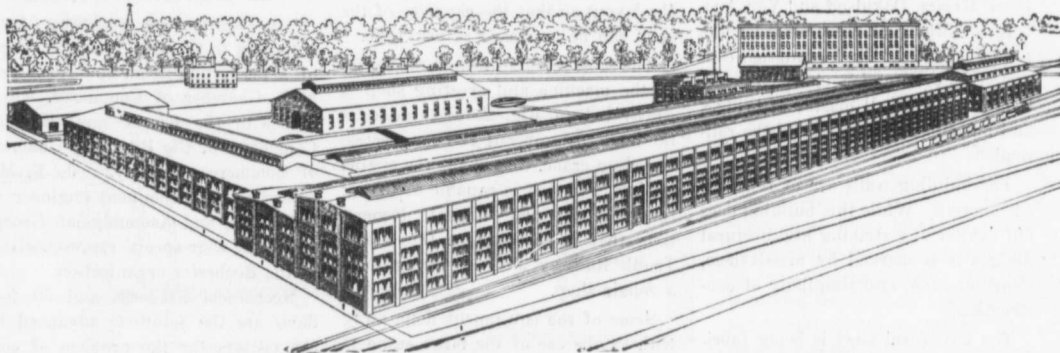
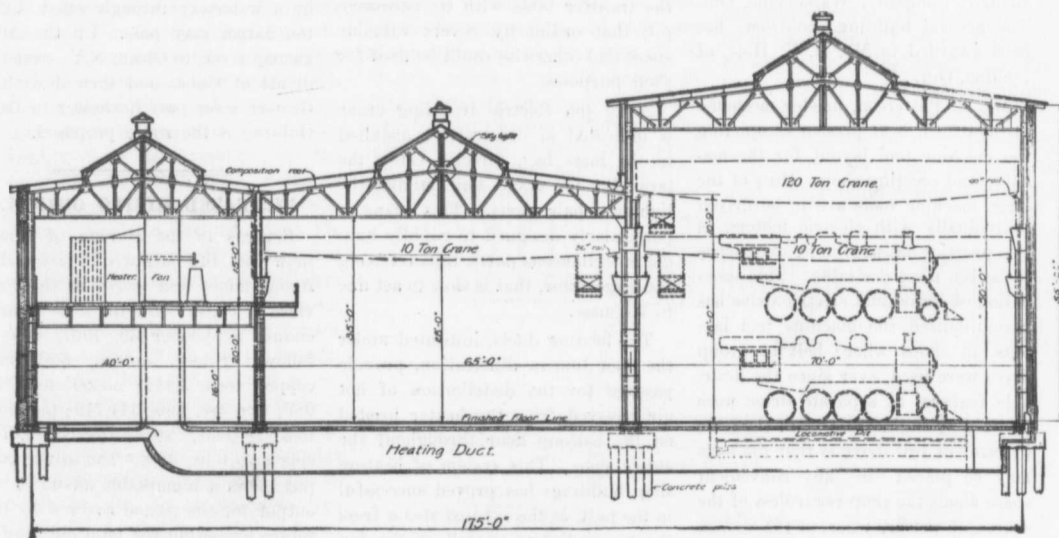


FIG. 1—BIRDS' EYE VIEW NEW G. T. R. LOCOMOTIVE REPAIR SHOPS, STRATFORD.



CROSS SECTION
of
MACHINE & ERECTING SHOP.

FIG. 2

ing done on that road. This view is as if taken from an elevated point to the southwest of the shops and indicates demolition and entire reconstruction of the old shops. The Y. M. C. A., the Mooney factory, etc., are shown in the distance. The large new machine and erecting shop, 616 feet long by 175 feet wide, and boiler shop, 154 feet long by 135 feet wide, indi-

mentioned shops occupy nearly three acres of ground space. The building to the left and adjoining the boiler shop is now standing, being the new addition erected a couple of years ago, and is used for the repair of locomotive tenders.

The other proposed buildings indicated in the background of the illustration are, reading from left to right,

ther permits. The old machine shop, that is being torn down in sections as fast as the new shop is erected, occupied a portion of the space covered by the new building.

As the ground selected for the plant was irregular and low in places, it was necessary to do considerable filling and leveling before starting construction work.