

hence is limited in its usefulness. In some conditions, however, it serves admirably. Manufactured in conjunction with fall rope carriers, it bears the commercial name of the Harris-Miller cable and carriage. (See Fig. 2.)

The next form of cableway was one in which the main cable was suspended practically horizontal. The carriage in this event was moved back and forth by the use of an endless rope operated by a drum, being

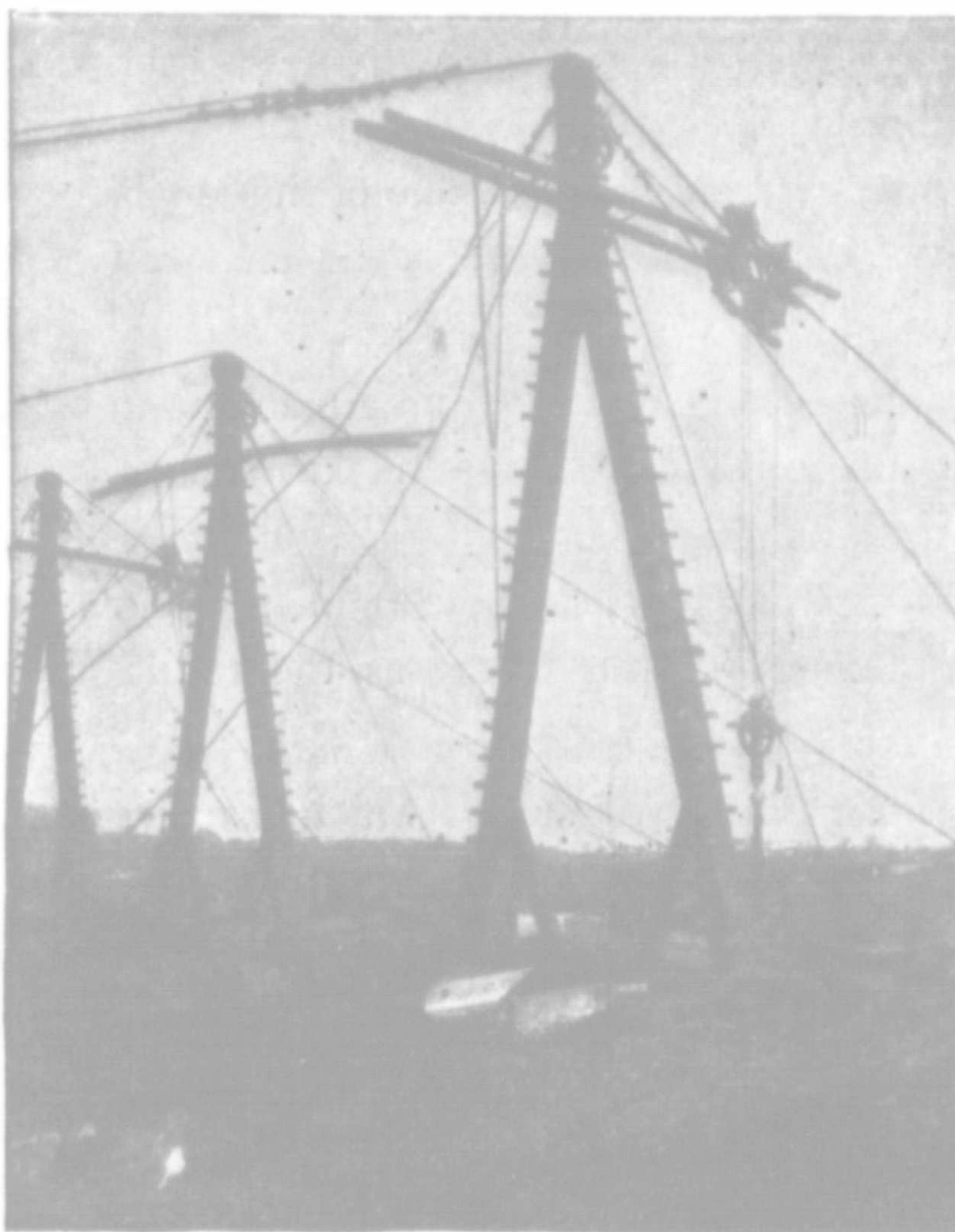


FIG. 1.—“The Blondin.”

a part of the hoisting engine. Another drum performed the function of hoisting. Such a machine was first introduced for open pit mining at the Tilly Foster mines, New York. The reason for its adoption was that a derrick could not be constructed with sufficient reach to hoist and deliver material from the pit.

The problem at Tilly Foster was to convert the old mine into an open pit by the removal of something like 300,000 cubic yards of rock. It was calculated that this would uncover at least 600,000 tons of ore.