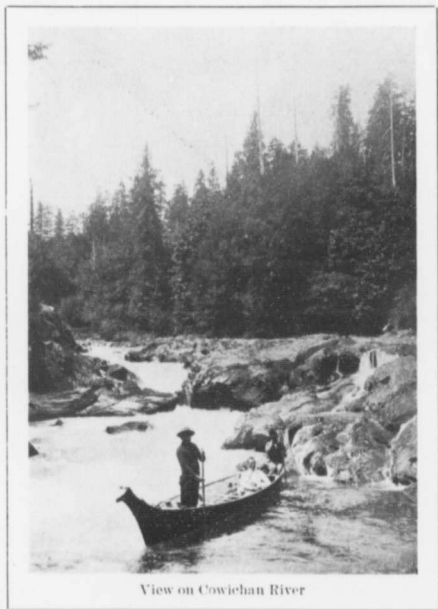


THE facilities for reaching the favored fishing waters of Shawnigan and Cowichan lakes, Koksilah and Cowichan rivers are essentially *de luxe*. To reach Shawnigan or the Koksilah one has but to board the north-bound E. & N. Railway—and, presto! one is there! The visitor bound for Cowichan forsakes the train at Duncan—a charming English hamlet



View on Cowichan River

midway “up the line”—from which point comfortable stages of the Price Brothers’ line, or automobiles, according to the inclinations of the traveler, are available for the twenty-mile river-side drive. This leads up the famed Cowichan valley, through aromatic forests of Douglas fir, and every mile traversed reveals some new delight. The progressive programme of the C.P.R. for Island development encompasses a first-class branch line of railway from Duncan to the Lake.