

H. H. FUDGER,
President.
J. WOOD,
Manager.

THE
ROBERT

SIMPSON

COMPANY,
LIMITED

PROBABILITIES.
Fresh east to south winds, fair
and warm; scattered showers or
thunderstorms.

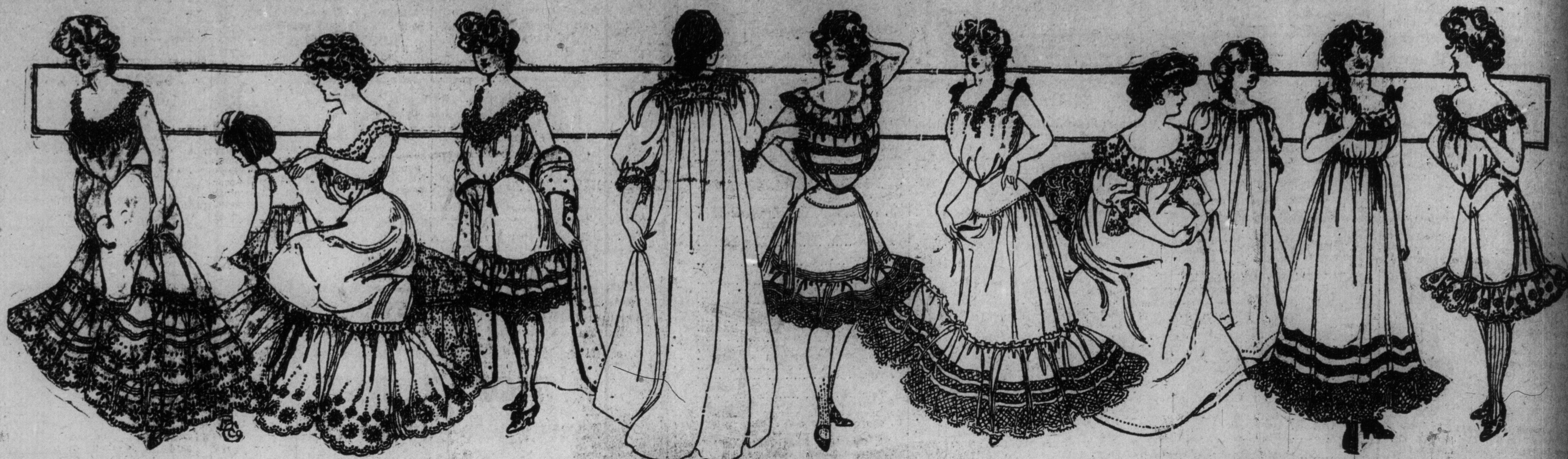
THE
ROBERT

SIMPSON

COMPANY,
LIMITED

MONDAY,
MAY 31

Great Selling of White Lingerie Fixed for June



Marking the Opening of Our Beautiful New Department of Women's Under Garments

SUMMER practically begins with the first of June. We have aimed to have our new Whitewear Department on the second floor of the New Building in service for the summer trade, and on Tuesday, the first of June, we would have it known—**all is ready.**

We have prepared for this new department. We have gathered a stock such as no previous June has witnessed. Simpson quality—every piece of it, and such a plenty! Such a variety!

We will concentrate our attention to-day on lingerie—dainty, lacy summer lingerie. To see it in its new home is a pleasure of itself, and you are freely welcome.

We mention just a few lines which have arrived for June selling.

In addition to these attractive offerings we will describe a special purchase of Swiss Ribbed Lisle Vests, selling at 35c instead of 50c to 65c.

Tuesday, June 1, at 8 a.m.

NIGHT DRESSES.

At 50c—Pretty Night Dresses of fine cotton, in slip over or high neck style, lace or embroidery trimmed.

At 60c—Another dainty Night Dress of good cotton, slip over neck, 3-4 sleeves, embroidery trimmed.

At 80c—A dainty gown, extraordinary value, in nainsook, slip over neck, embroidery beading and silk ribbons.

At 110c—Two exquisite styles of Night Dresses, fine nainsook, square or round slip over neck, finest embroidery beading, silk ribbon and lace.

PETTICOATS.

At 110c—Petticoats of good cotton, embroidery insertion and deep, heavy embroidery ruffle.

At 125c—Beautiful Lace Trimmed Petticoats, fine cotton, lawn flounce, with three clusters of tucks, three insertions and ruffle of fine lace.

At 150c—A dainty Petticoat of fine cotton, deep flounce of fine embroidery and tucks, dust ruffle, a handsome garment.

At 175c—A 32.00 Petticoat, of fine cotton, very deep flounce, trimmed with tucks, four rows and ruffle, of fine Valenciennes lace.

At 200c—Petticoats of fine cotton, deep flounce, trimmed with wide inser-

tions and deep ruffle of heavy fine torchon lace, four clusters of tucks.

DRAWERS.

At 25c pair—Drawers of cotton, wide style, flounces trimmed with pin tucks and ruffle of good wearing lace.

At 45c pair—Drawers of cotton, wide ruffle or fine embroidery and tucks, regularly worth 60c pair.

At 50c pair—Isabelle Drawers, fine nainsook, wide skirt bottoms, no garters at waist, both styles, extra value at 75c pair.

At 85c pair—Drawers of fine nainsook, umbrella style, ruffle and beading of fine embroidery, two clusters of tucks. Regular \$1.25 a pair.

CORSET COVERS.

At 25c—Corset Cover of fine nainsook, full front, lace and ribbon trimmed, bias skirt. Sizes 32 to 44 bust.

At 50c—Four beautiful styles of covers, fine nainsook or lawn, daintily trimmed with lace or embroidery and silk ribbons, full front or fitted styles, 32 to 42 bust.

At 60c—Charming Corset Covers, of fine nainsook or lawn, many fancy insertions of fine Val. lace, lace and ribbon on neck, back tucked. Sizes 32 to 44 bust.

A WONDERFUL OFFERING OF WOMEN'S VESTS.

1200 in all—Women's Extra Fine White Ribbed Lisle Thread Vests, guaranteed finest Swiss make, hand crocheted yokes, and very fine lace and beading on necks and arms, all are no sleeves and low neck, beautiful sheer quality. Sizes 32 to 38 bust. Regular prices 50c, 60c and 65c each. Tuesday, each **.35**

Box Frilling

(Neckwear Dept., 1st Floor, Yonge St.)

"Tourist" Frilling in white, sky, pink, mauve, 2-1/4 yards in box, for 15c.

"Tourist" Frilling, in white only, 6 yards in box, for 25c.

"Tourist" Frilling, in white only, 6 frills for 15c, or 2 boxes for 25c.

Chiffon and Lisse Assorted Frills, in white only, 6 frills in box, for 25c.

Net Frilling, in soft pleated net, 3 frills in box, for 25c.

Groceries for Tuesday

One Car Redpath's Standard Granulated Sugar, 20 lbs., \$1.00.

Choice Ripe Pineapples, large size, per dozen, \$1.45, 2 for 25c.

Choice Picnic Hams, 6 to 8 lbs. each, per lb., 14c.

Quaker Wheat Berries, 3 packages 25c.

Choice California Prunes, 4 lbs., 25c.

Lake of the Woods Five Roses Flour, 1-4 bag, in cotton, 94c.

Jam, in 2-lb. pail, black currant, strawberry and peach, per pail, 15c.

Panner's Orangeade, per bottle, 25c.

Peller's Cream Soda Biscuits, 3-lb. box 22c.

Heather Brand Flavoring Extract, 21-2 oz. bottle, assorted, 3 bottles 35c.

Canine's Tonic, Canada Pride Brand, 3 tins 25c.

Imported French Prepared Mustard, per bottle 5c.

Cut Glass for Wedding Gifts

Large Punch Bowl, beautifully cut, Regular \$55.00. Tuesday \$35.00.

Small Punch Bowl. Regular \$35.00. Tuesday \$15.00.

Large Berry Bowls, 10 inches, handsomely cut. Regular \$25.00. Tuesday \$12.00.

Large Ice Cream Trays. Regular \$18.00. Tuesday \$10.80.

Ten-Inch Fruit Nappy, low shape. Regular \$22.50. Tuesday \$10.80.

Nine-Inch Fruit Nappy. Regular \$18.00. Tuesday \$9.00.

Eight-Inch Fruit Nappy. Regular \$12.00. Tuesday \$6.50.

Large Water Jug. Regular \$15.00. Tuesday \$9.00.

Wine Decanters. Regular \$8.00. Tuesday \$4.70.

Sugars and Creams. Regular \$8.00. Tuesday \$4.70.

Celery Trays. Regular \$5.00. Tuesday \$2.50.

Knife Rest. Regular \$1.50. Tuesday \$1.15.

Fancy Serge 38c Yard

About 10 pieces of 'Fancy Striped Worsted Serge' in Copenhagen, golden brown, royal, terra cotta, navy and dark brown, all-wool, and absolutely fast in color. An unusual opportunity to get a very serviceable dress at an exceptionally moderate price. 42 in. wide. 38c per yard.

The Season's Culmination in the Separate Skirt Dept.

600 Remaining Skirts for Women and Misses to be Cleared at \$2.95. Values up to \$5.00.

SIMPSON'S Skirts are renowned over the whole Dominion of Canada for excellency of materials and styles, as well as perfection of cut, fit and finish. It is an exceptional case where we cannot give a perfect fit from our regular stock. The time has now come to clear the way for Summer Goods. We will put on sale to-morrow morning 600 Women's and Misses' Separate Skirts, made from our own shapes and our exclusive styles, at a price at which we could not buy them from any manufacturer at the present time.

The materials are summer-weight imported Panamas, French Venetians, Poplins, Satin Cloths, English Vicunas, with soft broadcloth finish, and all wool serges.

Colors in the lot are myrtle, navy, cardinal, black and brown.

Styles are either flare gore, pleated or combination of flare and pleated.

Trimnings are folds or strappings of self, or silk, or buttons.

Regular selling prices \$3.50, \$3.75, \$3.95, \$4.00, \$4.50 and \$5.00. Tuesday, \$2.95.

WHITE LAWN WAISTS.

Two specials for Tuesday's selling. Only 180 waists in the lot.

The first is of fine Swiss lawn, tucked front, with three rows of dainty embroidery on each side of front panel, which is of open work embroidery, tucked back, full length sleeves, and high collar, tucked and finished with lace. Tuesday, \$1.25.

The other is of fine white lawn, with embroidered front, of spot and eyelet designs, tucked back, front, sleeves and collar, finished with lace. Tuesday, \$1.25.

LACE WAISTS.

Handsome Waists of fine net, colors are white and ecru, circular yoke and collar of fine tucking, beautiful lace motifs, and gurgule insertion, front, back and sleeves

are tucked and trimmed with wide oriental insertion, silk lined throughout. Regular \$3.50. Special, Tuesday, \$7.50.

A Stylish Waist of fine net, with embroidered spots, back, front and long sleeves, made with clusters of pin tucks, trimmed with gurgule lace, silk lined, and finished with novelty tie, colors are white and ecru. Tuesday, \$5.00.

SUMMER WASH DRESSES, \$1.50.

On Tuesday we make a special showing of our simple, inexpensive Wash Dresses for summer wear. They come in English prints, shirting prints and percales, in stripes, spots, checks and other neat designs. Made in one or two pieces, some tucked and some piped; skirts with deep hems or flounces. Tuesday, \$1.50.

Simpson's Housefurnishing Suggestions



FOUR BEDROOMS—First, the Guest Chamber

WE will think of a nice moderate sized city house in a good residential district. The rooms are fairly spacious, and the architecture is of the newest taste without being faddy or at all extreme.

We will undertake to give our idea of what we would like to make of the Guest Chamber of such a house, were we given free use of our discretion within reasonable limit of cost.

The furniture we suggest is dull polished mahogany or Circassian walnut. Twin bedsteads of brushed brass, substantial in weight and appearance, would afford the chief motive of the room.

The carpet would be laid clear to the walls, covering the entire floor. We would use Wilton, in light rose or blue, preferably of a two-tone small wreath design.

The curtains for the windows would be of Brussels net, or a fine Marie Antoinette, coming either down to the floor or to the window sill, according to the style of window.

Side curtains of satin de Gene, mercerized or silk rep, in tones harmonizing with the carpet.

The bedspread should be a feature of the room's color scheme. We suggest for this room a real white or ivory renaissance lace, lined with satin, colored in tone with the carpet and curtains.

The bedroom seat, couch and chairs should be covered with a cheerful chintz, whose predominating colors suggested the color scheme of the entire room.

The cost of this bedroom is almost impossible to give without figuring on specified dimensions.

The Wilton Carpet suggested comes at \$2.00 a yard.

The Brussels Curtains, \$1.50 per yard.

The Side Curtains, \$1.55 per yard.

The Bedspread Bed Spreads, \$25.00.

The Chintz, \$2.00 per yard.

For Stout Men

Our \$15 Suits Include Sizes Up to 52

"SIXTY-SEVEN inches round the diaphragm"—so runs a foolish song popular a while back. When we consider the amount of goods needed for a waist measurement like that we are appalled. We couldn't do it at the figure. But outside minstrel shows there are mighty few waists measuring 67 inches.

Our \$15.00 line of Suits for stout men includes sizes 40 to 52 inches. We give stout men the fit and proportion that lightweights receive. We have specialized on fifteen-dollar suits this year, and stout men are included in the benefit.

Specifications as follows:

Suits, made of fine imported English worsteds, for men of stout or corpulent proportions; material especially selected and adapted to this particular style of suit; will give excellent service and handsome appearance. The colorings are mostly staple greys, with darker subdued stripe effect, also brown and grey tones. Coats are cut to suit the requirements of the stout or corpulent man, and giving a perfect fit in every respect; lined with fine mohair (twill) linings; tailored and finished in the most careful manner, with best interlining and high-grade trimmings. Very special value \$15.00.

Work Shirts at 75c

JUST depends on what style you want, what material, what color and so forth.

We have them all, and you can't beat them at the price. Our 75c work shirts will stand the hardest of all tests—the inspection of the women folk.

Black Sateen, reversible collar and blue shades, double front and back, pocket, large size bodies, 75c.

Plain Black or Black and White Drill shirts, a very strong wearing garment, 75c.

English Oxford, reversible collar and pocket, large variety of stripes, checks, etc., 75c.

American make, khaki or blue duck, extra well made, 75c.

American made Oxford, in grey or

Special value at 75c.

SPECIAL REDUCTION FOR TUESDAY.

600 Plain Blue or Khaki Work

Shirts, collar attached, continuous

facings on sleeves, also black and

white striped drill, and English Oxford

Work Shirts, with bands only, Sizes 14 to 17. Our regular price 75c.

Tuesday 55c.

A Boot Maker's Little Mistake

Result Men's \$3 and \$4 Boots and Oxfords \$2.49

Men's \$5.00 Boots for \$3.50

THESE goods we offer so cheaply to-morrow were not ordered to be shipped for two months or more yet. The error was not ours. We have been requested to accept a discount, enabling us to hasten them out to you instead of returning them whence they came.

On sale, then, to-morrow, as follows:

700 pairs Men's Boots and Oxfords, in patent colt, velours calf, Dongola kid and box calf leathers; some have dull matt calf uppers; some are leather lined; every pair Goodyear welted; boots that sell regularly at \$3.00, \$3.50 and \$4.00. Sizes 5 to 11. Tuesday \$2.49.

350 pairs Men's High-Grade American Boots, made by Packard & Field, in gunmetal and velours calf only, medium heavy Goodyear welted soles, Blucher cut, very neat, dressy and serviceably. Sizes 5 to 11. Regular \$5.00. Tuesday \$3.50.

Men's Soft Hats, newest shapes, in pearl grey, slate, taupe, bronze, beaver, walnut, maple, elger and fawn; extra fine quality fur felt. Tuesday \$1.00.

Men's Stiff Hats, latest American styles, in special grade English fur felt, light in weight, and easy fitting, very dressy shapes. Tuesday \$1.50.

Special sale of White and Ecru 3-piece Linen Robes at half price. These consist of a shapely skirt, ready for sewing up the back, and coats, both long and short, ready to wear with them. 38 only, just delivered, and up-to-the-minute in style. Regular prices would be \$12.50, \$25.00 and \$22.50. To clear quickly at \$10.00, \$12.50, \$11.50 and \$13.50.

These goods are downstairs, Main Floor, new store.

A Reduction in Camp Blankets

Right in the face of the season when these goods are needed most, we have a clearance to offer at very much reduced prices.

Thoroughly scoured, clean, soft, strong, grey union Camp Blankets; warm, close nap, clear grey, neat border; just the blankets for camp, cottage, prospectors, etc. Only 175 pairs in the lot. The reductions are substantial.

5 lbs., 52 x 72 inches. Regular \$17.50 per pair. Tuesday \$12.50.

6 lbs., 56 x 76 inches. Regular \$21.90 per pair. Tuesday \$15.00.

7 lbs., 60 x 80 inches. Regular \$24.50 per pair. Tuesday \$17.50.

8 lbs., 64 x 84 inches. Regular \$27.00 per pair. Tuesday \$20.00.

10 lbs., 70 x 90 inches. Regular \$35.00 per pair. Tuesday \$25.00.

Black and White Checks

250 yards Black and White Check Dress Goods, from 1-16 of an inch to 1-2 inch size checks. There is no need to tell you of the quality; they are the Simpson quality. The chief point is that they will be here to-morrow at 38c per yard, and if you need them, by all means buy now, 42 in. wide, 58c per yard.

Pearl Grey Fedoras \$1

Men's Soft Hats, newest shapes, in pearl grey, slate, taupe, bronze, beaver, walnut, maple, elger and fawn; extra fine quality fur felt. Tuesday \$1.00.

Men's Stiff Hats, latest American styles, in special grade English fur felt, light in weight, and easy fitting, very dressy shapes. Tuesday \$1.50.

Special sale of White and Ecru 3-piece Linen Robes at half price. These consist of a shapely skirt, ready for sewing up the back, and coats, both long and short, ready to wear with them. 38 only, just delivered, and up-to-the-minute in style. Regular prices would be \$12.50, \$25.00 and \$22.50. To clear quickly at \$10.00, \$12.50, \$11.50 and \$13.50.

These goods are downstairs, Main Floor, new store.

Linen Robes, Semi-made Semi-Price

(New Robe Dept., adjacent to James Street Entrance)

Special sale of White and Ecru 3-piece Linen Robes at half price. These consist of a shapely skirt, ready for sewing up the back, and coats, both long and short, ready to wear with them. 38 only, just delivered, and up-to-the-minute in style. Regular prices would be \$12.50, \$25.00 and \$22.50. To clear quickly at \$10.00, \$12.50, \$11.50 and \$13.50.

These goods are downstairs, Main Floor, new store.

English Mohair 33c Yard

(Dress Goods Department.)

English Mohair, a firm, sturdy weave and brilliant finish; well known to women for its serviceableness, excellent for bathing suits and for waists and skirts for hard wear. On Tuesday you will have an opportunity of getting it for 33c per yard, worth 40c.

Black, navy blue and brown.