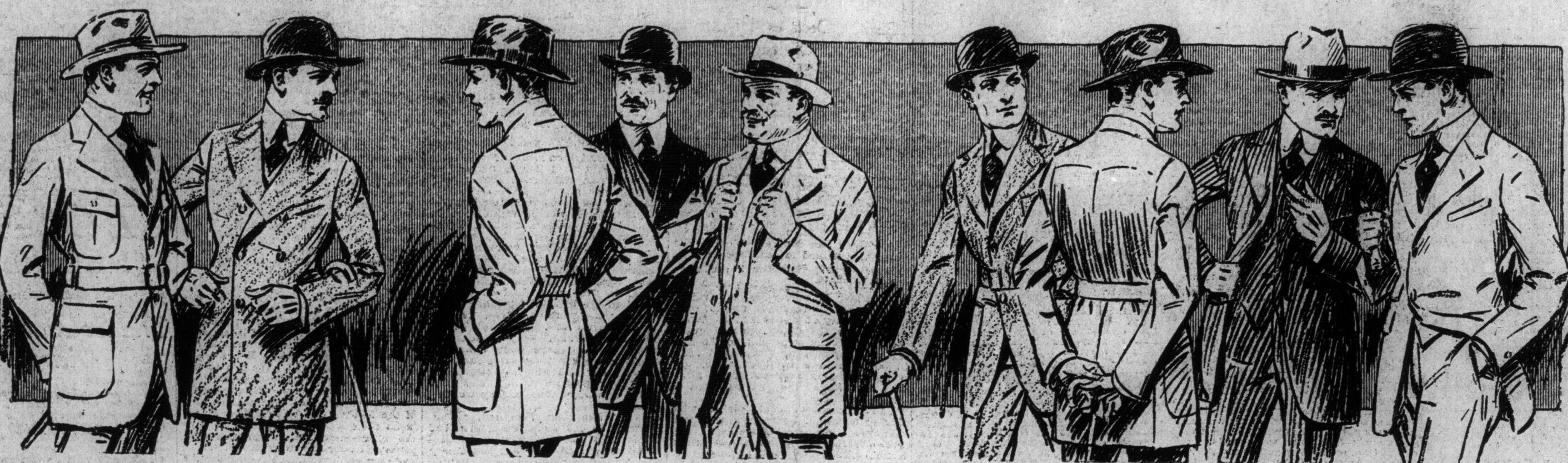


We prepay shipping charges, the cheapest way, on all orders of \$10.00 or over to your nearest station in Ontario and Eastern Provinces on both Mail Orders and City Purchases.

EATON'S DAILY STORE NEWS

Take advantage of the Customers' Deposit Account Department. For further particulars, apply at D. A. Office, Fourth Floor.

Come to the Store Today—Be Convinced of the Values by the Values



240 Snappy Suits for Young Men and Men—A Manufacturer's Surplus of Fine Quality Suits, in Clearance This Morning at \$17.25 a Suit

Smart Belted and Form-Fitting Styles, with Great Variety on Pockets, Belts, Etc., for the Young Men; Also Classy Models for Men Who Like the More Conservative Styles. Sizes 34 to 44 in the Lot, But Not All Sizes in Each Line. Good Selection of Patterns and Fine Materials. If You Want to Save on a Spring Suit See These Early This Morning

Here's the story—A manufacturer of fine grade clothing, after filling his spring orders and holding his surplus stock sufficiently long to take care of repeat orders, had 240 suits left. It was to his advantage to clear them in one deal, and here they are offered today at a price that will prove a surprise to men who see these suits. These young men's and men's styles, in regular sizes and stout sizes. For young men there are the very latest models in belted and form-fitting styles, many with military style pockets, others with patch, slanting and flap pockets. The materials are cassimere and cheviot-tweed tweeds, Scotch, and rich flannel effects, in hair and chalk-line stripes, small checks, fancy mixtures, and plain shades of blue, brown, grey and fawns. Some quarter, others half lined, and many lined all through. In the men's suits are the more conservative sack styles, in regular sizes; also stouts in tweeds in various finishes, worsteds and chevviots, in plain greys and blues, handsome dark shade, with thread stripes and the lighter spring colorings, in many patterns. Sizes in the lot, 34 to 44, but not all sizes in any one pattern or color. Extra special, today 17.25

Extra Good Values and Immense Variety in Styles and Patterns in Regular Lines of Suits, Overcoats and Raincoats for Men

It's a natural impulse for men to want to spruce up at this time of year, and so new clothes are uppermost in the mind. What kind of a suit or spring coat to buy is the problem, and it's a real problem with most men, because they have been too busy to note the new styles, what materials are most becoming, or to determine the pattern or color they would like to have. Here, then, is where variety to choose from is appreciated—many styles to try on, many cloths, patterns and colors to select from—factors which go far to banish that uncomfortable feeling that perhaps one will have to give it up and see a little more. Come today to look or buy. These items are chosen from the great assortments to give an idea of the values that are procurable:

Topcoats, in Belted, Slip-Or and Chesterfield Styles

Chesterfield Topcoats, about 43 inches in length and shaped lightly to figure, are shown in Oxford grey, black and dark grey, and are lined throughout. Sizes 35 to 44. Price 20.00

A Chesterfield Coat, in dark or Oxford grey, in a soft, richly-finished coating. Priced at . . . 30.00

The Trench Style Coat, with belt all round, is shown in a two-button style, with long soft lapels and patch pockets. This is in a mid-grey Donegal tweed effect; a good fitter; quarter lined only. Price 16.50

A Young Man's Topcoat, is single-breasted and has soft roll notch lapels, patch pockets, inverted pleats and half belt at back. In a grey homespun, with a tinge of green; quarter lined and in-seams, taped with shot silk mixture. Price 20.00

Made from soft-finished tweed, in a rich shade of fawn, with a green mixture, is a Box-back, Single-breasted Topcoat, with patch pockets, with flaps, double-stitched seams and cuffs on sleeves; quarter lined. Price, 20.00

A Box-back Coat, without vent, but with centre seam, is a distinctive model for young men, and is made from a handsome brown tweed, with a mixture of green, golden and grey, and is priced at 25.00

The Admiral, an easy-fitting model, is a single-breasted style, with the back draping loose, slash style pockets, with entrance to inner pockets. Made from soft tweed coatings; in grey and fawn mixtures; unlined, except through sleeves. Price 22.50

Tweed Raincoats That Serve as Spring Coats and Raincoats

One in an Oxford grey cheviot finish, in self shade, with fancy striped back, is in slip-on style, with full draping back, convertible lapels, and with sewn and cemented seams; a useful coat for rainy weather or cool days. Sizes 34 to 44. Price 15.00

Raincoats made from the rougher weaves, in Donegal tweed effects, in rich greys and fawn, with fancy mixtures, have the English style raglan shoulders, full box-back, without seams and inner side of grey rubber sheeting. Price 20.00

Another in a mid-grey or a brown in broken check weave, in the rough tweed, is in very stylish and distinctive style. Price 23.50

Some of the Swagger Styles for Young Men

Belted suits for young men—"EATON"-made suits, in single-breasted style, with patch pockets and made from a firmly woven worsted finished material, in a dark grey, with small check of olive and light grey. Sizes 32 to 39. Price 20.00

Double-breasted Belted Suit, with crescent-shaped pockets, medium length peaked shape lapels and made from a dark grey twilled worsted-finished tweed. A youth's first long trouser suit. Lining of black lustre. Sizes 32 to 37. Price 20.00

Young Men's Single-breasted, Two-button, Form-fitting Sack Suits, with peaked or notch-shaped, soft-rolling lapels, are shown in greys in fine twill weave, and are lined with lustre to correspond in color. Sizes 33 to 39. Price 25.00

The Diplomat is a double-breasted, two-button, form-fitting model, with step-shaped lapel. In new shade of brown, in fancy mixture, a hopsack woven tweed, very smart, both in style and pattern. Price 25.00

A decidedly smart suit for young men is a two-button, double-breasted model, with notch style lapels, belt all round, and patch pockets, quarter-lined with black lustre. The material is a plain brown flannel effect. Price 27.50

Green, a much favored color this spring, is shown in two lines, a plain green in a soft finish, another in self-shade in a hopsack weave. Single-breasted, with patch pockets, and quarter-lined with fancy striped silk mixture or black lustre. Price 27.50

This Morning on Sale in Men's Clothing Department, Main Floor, Queen Street

THE T. EATON CO LIMITED

Young Men's Navy Blue Suits --Always Favorites for Spring and Summer Wear

The Belmont, a single-breasted model, with belt all round, shaped well to form at waist. A two-button model, with soft roll lapel, vest closes with five buttons. Trousers in fashionable width, with cuffs. Sizes 33 to 39. Price 18.00

The Derby is a suit of good quality and fine workmanship, in a navy blue fine twill worsted of smooth, rich finish. Single-breasted, form-fitting, two-button model, with soft roll notch lapels; linings of fine lustre. Sizes 33 to 39. Price 28.00

Greys Are Serviceable

If it's to be a grey suit, don't fail to see these plain greys, in a fine twill, in smooth, pliable finish. These are men's two and three-button sack styles, with notch-shaped lapels; well-built shoulders, and close-fitting collar; linings of lustre to match. Sizes 36 to 44. Price 20.00

"EATON"-made Suits, from our own modern workrooms, tweeds and worsted-finished materials, in medium and dark greys, in pin check, small broken check, and twilled weaves. Single-breasted and three-button sack styles. Sizes 36 to 44. Price 20.00