

BRITISH COLUMBIA SAW MILLS

Photographed and Described by Our Travelling Representative.

THE FAST KOOTENAY LUMBER COMPANY.

The East Kootenay Lumber Company is a combination of three concerns, the Park Mitchell, operating on Moyie Lake; the Cranbrook Lumber Company, operating at Cranbrook and Palmer Bar, six miles west; and the McNab Lumber Company, operating at Jaffray. In 1902 these companies were amalgamated

capacity of 40,000 feet of lumber per day.

The entire output of the four mills is marketed in Manitoba and the North-West Territories, the company doing a very large business in railroad ties with the C.P.R., having the contract for supplying the entire prairie section of that company's lines. It is estimated they are among the largest railroad tie manufactur-

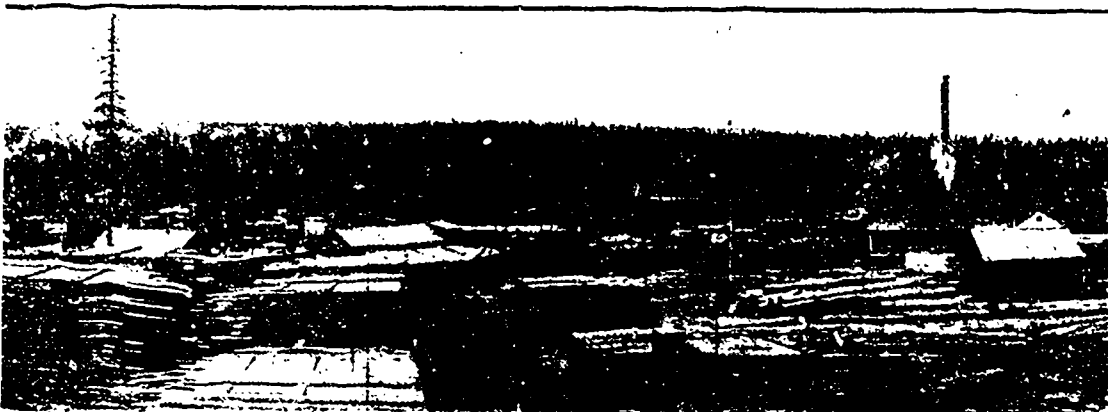
shrewdness of management they have surrounded themselves with energetic and capable employees who are as proud of the growth of the institution and as solicitous for its continued prosperity as they are themselves. Both are experienced lumbermen and take a prominent part in the affairs of the British Columbia Mountain Lumbermen's Association, whose headquarters are in Cranbrook.

W. C. WELLS.

Situated at Palliser, at the foot of the Rockies, twelve miles east of Golden, on a level park-like expanse of greensward in the valley of the roaring Kicking Horse, lies the neat little mill owned by W. C. Wells, late member of the Provincial Cabinet at Victoria. All around are lofty snow-clad peaks, which coupled with the surpassing loveliness of the valley and the rush of the sparkling waters of the swift-flowing river, cannot fail to cause the traveller to pause, lost in wonder and amazement.

The plant consists of a saw and planing mill erected in the year 1886, just after the passing through of the Canadian Pacific Railway. It was at first only intended to run on a small scale for the purpose of cutting and marketing the surrounding limits, but since the great Northwest began to grow in population with such rapid strides, the demands made upon the output, both on account of the excellence of the lumber and the nearness to the market, have been so great as to necessitate a vast increase in the capacity, so that today the visitor finds a fair-sized mill with an output of 50,000 feet per day. It is equipped with the most modern machinery and all the known specialties of the day.

On account of the dryness of the atmosphere it has not been found necessary to erect a dry kiln, the lumber being piled in the yards and rapidly dried by the scorching rays of the hot sun.



EAST KOOTENAY LUMBER COMPANY'S MILL AT CRANBROOK, B. C.

under the name of the East Kootenay Lumber Company, with headquarters at Cranbrook. The mills operated by this company have a combined capacity of over 42,000,000 feet annually and constitute one of the largest lumber plants in the East Kootenay section of British Columbia. The company own in their own right over 40,000 acres of fine tamarac, pine and fir, while they have a ten year lease on 175,000 acres of C.P.R. lands. All their limits are located on the Moyie and Kootenay rivers.

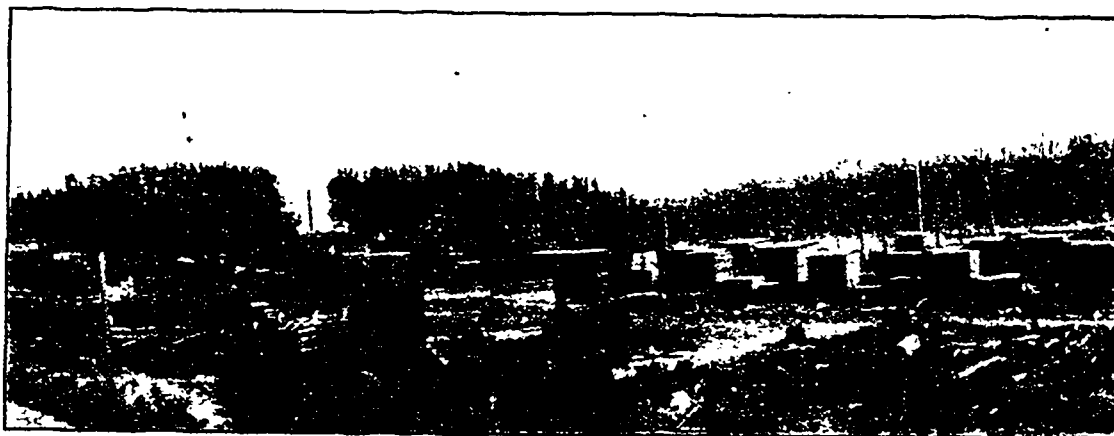
The Park Mitchell mill occupies a site of fifteen acres on the Moyie river at Ryan, thirty miles west of Cranbrook, the main line of the Crows Nest Pass Railroad running right through it. The plant consists of a saw mill, tie mill and planing mill. The main building is 45 x 120 feet and is equipped with the latest improved machinery, including circular, twin saw for ties, bevel edgers, trimmer, slash table and two planers. Power is supplied by two 60" x 16' Leonard boilers and one 20 x 24 Hamilton engine, while a dynamo and engine provide light for the mill and yard. The capacity is 50,000 feet of lumber on the circular side and 2,000 ties per day.

The Palmer Bar mill, one of the Cranbrook Lumber Company's properties, is a small portable mill with a capacity of 15,000 feet per day.

The Cranbrook mill is situated on a site of ten acres adjoining the tracks of the Crows Nest Pass Railroad at Cranbrook. It is a circular mill with a capacity of 35,000 feet of lumber daily.

The Jaffray mill occupies a site of twenty acres, one and a half miles west of Jaffray depot, on the Crows Nest Road. It too is a circular mill equipped with the most modern machinery and possessing a manufacturing

ers in the Dominion. Some idea will be gained by the reader of the vastness of the shipments of ties for the C.P.R. last year when it is known that it took 250 train loads, consisting of 16 cars to the train, to carry them to their destination on the prairies. The excellence of the company's product is so well known and so vast has become the increase in the demand for their lumber that they are now considering the advisability of further extensions. Visitors are always welcome to inspect the company's various plants and they will find much to ad-



EAST KOOTENAY LUMBER COMPANY'S MILL AT JAFFRAY, B. C.

mire in the bright and spacious offices, the clean, airy stables and the neat and well-kept appearance of the different plants.

The company has been particularly fortunate in securing for its management Mr. A. Leach as president and Mr. W. Colpman as manager. They are both particularly energetic and capable business men and are favorably known as men of sterling qualities, securing for them the esteem and respect of Cranbrook and the entire Kootenay country. As evidence of their

Mr. Wells owns 10,000 acres of fir, cedar and spruce, the cut of which is driven to the mill after a course of fifteen miles down the Beaverfoot and Kicking Horse Rivers. His dimensions, boards, ship lap, flooring, ceiling, siding and mouldings are in great favor all through the Territories and Manitoba, where the entire output is marketed.

Despite the depressed condition of the trade generally in the Province, the demands made upon the mill have become so vast during the