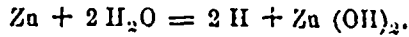


It is well known that the "copper-zinc couple" produced by immersing zinc in a solution of a copper salt decomposes water.

An analogous reaction of the gold-zinc couple accounts for the evolution of hydrogen which we have mentioned:



The hydrate of zinc is at once dissolved in the excess of cyanide:

$Zn(OH)_2 + 4KCy = K_2ZnCy_4 + 2KOH$, which reaction explains the increase in the alkalinity of the solution.

(To be continued.)

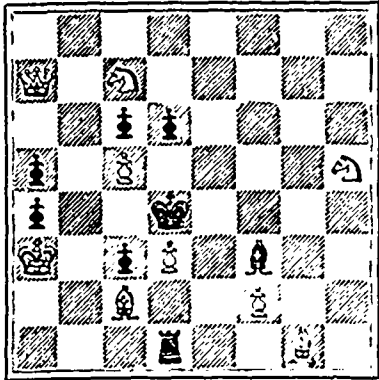
If you are at all curious to try something new, write Percy J. L. Lear, Atlantic Cigar Manufacturing Association, 221 Barrington St., Halifax, for particulars.

CHESS.

PROBLEM No. 136.—B to K16.
Solved by C. W. L.

PROBLEM No. 137.—Kt to QB5.
Solved by C. W. L.

PROBLEM No. 138.
By B. M. FOSTER, Boston.
Black 8 pieces.



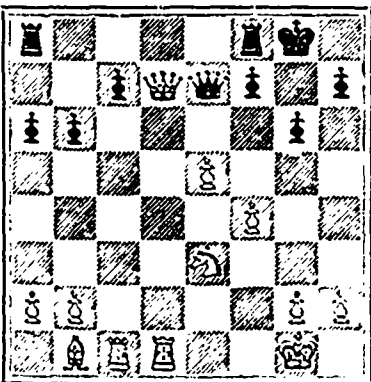
White 9 pieces.
White to play and mate in two moves.

GAME 142.

A well-played and instructive game.

- | | |
|----------------|-----------------|
| WHITE. | BLACK |
| 1 P to Q4 | Kt to KB3 |
| 2 P to QB4 | P to K3 |
| 3 Kt to QB3 | P to Q4 |
| 4 Kt to KB3 | P to QK3 |
| 5 P takes QP | P takes P |
| 6 B to KKt5 | B to K2 |
| 7 P to K3 | B to QKt2 |
| 8 B takes Kt | B takes B |
| 9 R to Bsq | E to K2 |
| 10 B to Q3 | Kt to Q2 |
| 11 Castles | Castles |
| 12 Q to B2 | P to Kt3 |
| 13 KR to Qsq | P to QR3 |
| 14 Q to Kt3 | B to Q3 |
| 15 B to Kt5q | Kt to B3 |
| 16 Kt to K5 | Q to K2 |
| 17 P to KB4 | B takes Kt |
| 18 QP takes B | Kt to Kt5 |
| 19 Kt takes QP | B takes Kt |
| 20 Q takes B | Kt takes P (K3) |

21 Q to Q7
GLASGOW (TO MOVE.)
Black 11 pieces.



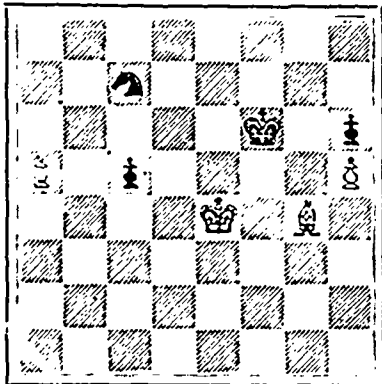
White 11 pieces.

LIVERPOOL.

- | | |
|----|-----------|
| 21 | Q to QK5 |
| 22 | Q takes Q |
| 23 | QR to Qsq |

- | | | |
|----|--------------|------------|
| 24 | R to Q3 | R takes R |
| 25 | B takes R | R to Qsq |
| 26 | B takes RP | R to Q1 |
| 27 | R to B3 | Kt to Q4 |
| 28 | R to Q3 | R takes R |
| 29 | B takes R | Kt takes P |
| 30 | B to B4 | Kt to K3 |
| 31 | K to B2 | P to Bsq |
| 32 | K to K3 | K to K2 |
| 33 | K to K4 | P to QB3 |
| 34 | P to KR4 | P to KR3 |
| 35 | P to KR4 | Kt to B2 |
| 36 | P to KR5 | P takes P |
| 37 | P takes P | Kt to K3 |
| 38 | P to QR3 | Kt to K2 |
| 39 | B to K2 | K to K3 |
| 40 | B to K4 ch | P to KB4 |
| 41 | P takes P ch | K takes P |
| 42 | P to R4 | Kt to K3 |
| 43 | P to K4 | Kt to B2 |
| 44 | P to R5 | P takes P |
| 45 | P takes P | P to B4 |

GLASGOW.
Black 4 pieces.



White 4 pieces.

LIVERPOOL (TO MOVE)

- | | | |
|----|------------|--------------|
| 46 | B to K2 | K to K3 |
| 47 | B to B4 ch | K to Q3 |
| 48 | K to B5 | Kt to Q4 |
| 49 | K to Kt6 | Kt to K6 |
| 50 | B to K2 | P to B5 |
| 51 | K takes P | P to B6 |
| 52 | B to Q3 | Kt to Kt5 ch |
| 53 | K to Kt5 | Kt to K4 |
| 54 | B to K4 | K to B4 |
| 55 | P to QR6 | Resigns |

The foregoing game is one of a pair played by correspondence in a match between the Liverpool and Glasgow Clubs.

Have you tried the
'Cable Extra'
CIGAR?

Also a Remedy for Catarrh is the Best, Easiest to Use, and Cheapest.
CATARRH
Sold by druggists or sent by mail, 50c. E. T. Hazeltine, Warren, Pa.

PARSONS



PILLS

Make New Rich Blood

"Best Liver Pill Made."

They positively cure SICK HEADACHE and BILIOUSNESS, all Liver and Bowel Complaints. In Glass Vials they are in a bottle, one a box. They expel all impurities from the blood. Delicate women find great benefit from using them. Sold everywh. or sent by mail for 25c. In stamps. Five bottles \$1.00. Full particulars free. I. S. JOHNSON & CO., 22 North House St., Boston, Mass.

DRAUGHTS-CHECKERS

All communications to this department must be addressed directly to the Checker Editor, M. R. W. Forsyth, 36 Grafton St.

TO CORRESPONDENTS.

C. MATTHEWS, St. John, N. B.—Your last favor with enclosures received with thanks. We have mailed a reply.

JOHN M. HUMPHREYS, Trenton.—Your card is received. Solution to Problem 303 is correct. We are pleased to learn that Problem 298 still holds your attention, and that you have so far advanced that you are "beginning to think that it is a little difficult." We trust that you will continue till you conquer it.

EPHRAIM H. HUMPHREYS, Trenton.—Your correct solution to Problem 303 is received.

The November number of the *American Checker Review* is before us. This valuable magazine appears to improve with each succeeding issue, and should be in the hands of every lover and student of the game. The office to which communications and subscriptions should be addressed is 137 Blue Island Avenue, Chicago, Ill., U. S. A. The latest number contains a portrait and a short biographical sketch of H. Z. Wright, the famous Boston expert. He has a wonderfully retentive memory, and has the reputation of knowing and remembering more of the literature of checkers than any other living man. He is only 34 years of age, and has as yet been beaten by only five of the acknowledged masters of the game in the United States. He is a letter-carrier in the Central Post Office, Boston, where his memory, which was developed by the study of this game, is found of great value in managing the immense volume of mail matter that daily passes through his hands.

SOLUTION.

PROBLEM 303.—The position was: black men 1, 3, 12; white men 9, 29, 30; black to move and win.

(By Messrs. Humphreys)

- | | | | |
|-------|-------|-------|----------|
| 12-16 | 23-27 | 31-26 | 1-5 |
| 29-25 | 18-14 | 23-18 | 10-3 |
| 16-19 | 3-7 | 26-22 | 17-10 |
| 1-25 | 22-30 | 26-18 | 15-black |
| 19-23 | 27-31 | 22-17 | wins. |
| 22-18 | 26-23 | 15-10 | |

V. r. I.

Another solution from this point is as follows:

- | | | | |
|-------|-------|-------|-------|
| 30-26 | 22-18 | 23-19 | 9-2 |
| 3-7 | 24-27 | 31-27 | 27-23 |
| 25-22 | 26-23 | 18-15 | 2-11 |
| 19-24 | 27-31 | 1-6 | 23-7 |
- black wins.

GAME 192—"SINGLE CORNER."

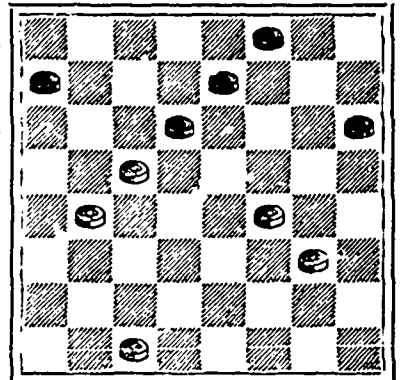
Played between Messrs. S. Granville (black) and A. J. Grant (white.)

- | | | | |
|-------|-------|-------|--------|
| 11-15 | 10-17 | 7-23 | 2-7 |
| 22-18 | 21-14 | 26-19 | 28-24 |
| 15-22 | 16-20 | 6-9 | 6-10 |
| 25-18 | 24-19 | 31-27 | *22-17 |
| 8-11 | 4-8 | 9-18 | |
| 29-25 | 27-23 | 27-24 | |
| 11-16 | 8-11 | 20-27 | |
| 18-14 | 23-18 | 32-14 | |
| 9-18 | 11-15 | 1-6 | |
| 23-14 | 18-11 | 25-22 | |

* This brings us to the following position, which we present as—

PROBLEM 305.

Black men 3, 5, 7, 10, 12.



White men 14, 17, 19, 24, 30.
Black to play. What result?

We commend this to the attention of our solvers, as we think that they will find it an interesting end game.

IMPERIAL
CREAM TARTAR

BAKING POWDER
PUREST, STRONGEST, BEST.

Contains no Alum, Ammonia, Lime, Phosphates, or any Injurious.
E. W. GILLETT, Toronto, Ont.

GILLETT'S
PURE POWDERED 100%
LYE

PUREST, STRONGEST, BEST.
Ready for use in any quantity. For making Soap, Softening Water, Bleaching, and a hundred other uses. A can equals 25 pounds Sal Soda.
Sold by All Grocers and Druggists.
E. W. GILLETT, Toronto.