

# DOMINION MECHANICAL & MILLING NEWS

VOL. VII.—No. III.

TORONTO, ONTARIO, DECEMBER, 1886.

Price, 10 Cents  
\$1.00 PER YEAR.

## THE STOCKWELL MILLS, GALT, ONT.

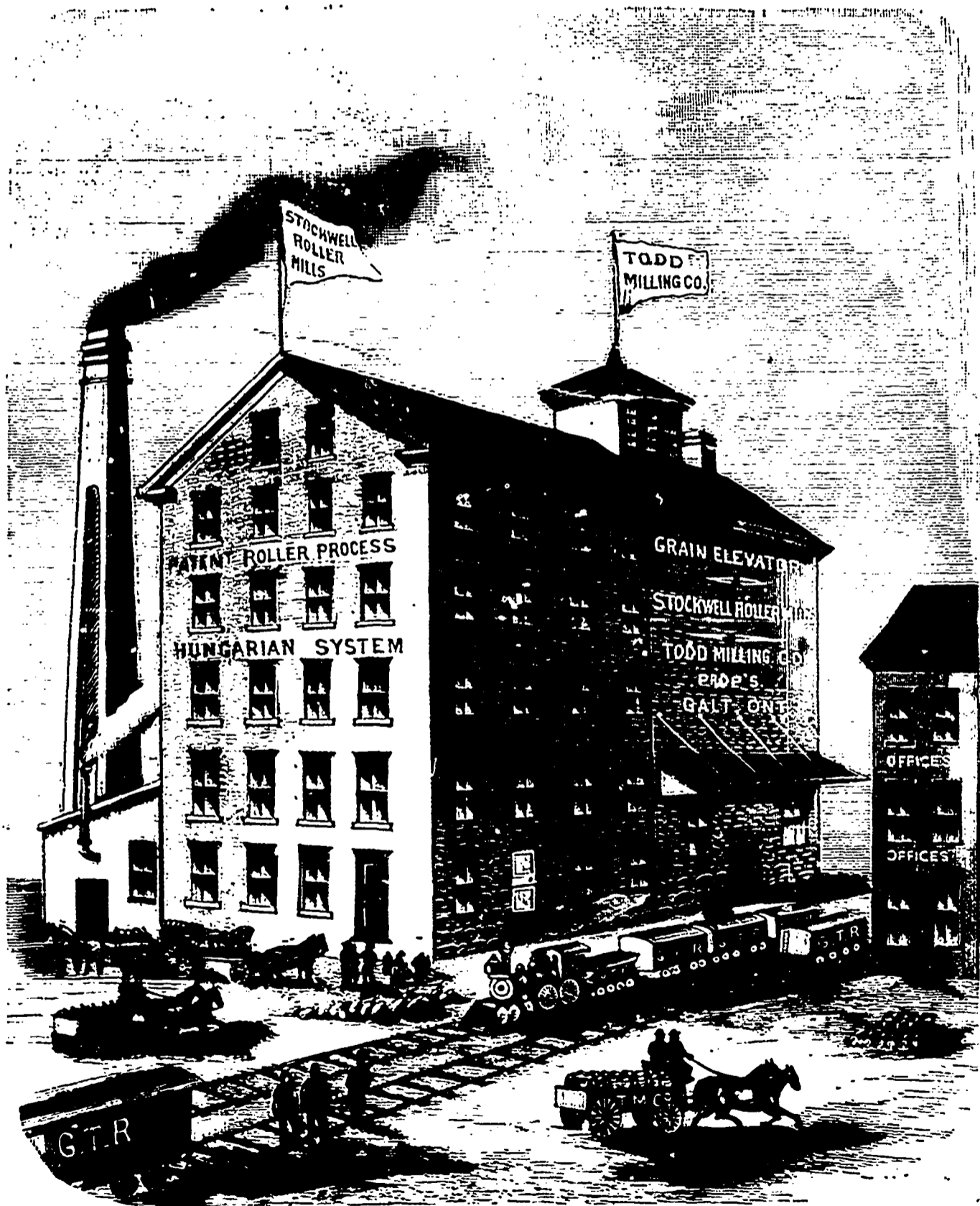
WE present to readers of the MECHANICAL AND MILLING NEWS this month an illustration of the Stockwell Mills at Galt, Ont., which, after several years of inactivity, have been thoroughly refitted and

mixing as desired. There is also an automatic weigher for weighing grain before passing into the rolls, and a track scale will be erected shortly by which bran and middlings can be spouted from the bins without handling and weighed in the cars.

On obtaining possession of the property the company

ously complete and well adapted to the ends in view that the proprietors are justified in claiming that they have now one of the model mills in the Dominion.

The driving power is furnished by a fine Goldie & McCulloch automatic cut-off engine, 150 h. p., with three large boilers, air pump and condenser. In the basement



THE STOCKWELL MILLS, GALT, ONT.

started in operation again by the Todd Milling Company. These mills are admirably situated close to the track of the Wellington, Grey & Bruce division of the Grand Trunk railway, providing unsurpassed receiving and shipping facilities. The building is of stone, large and substantial, embracing the mill proper, five storeys high, with basement, engine and boiler house, and a commodious grain storehouse, with nine large hopper bins, giving facilities for keeping each grade of wheat separate, and

decided to remove the entire flouring plant then in the building, and to remodel the mill in accordance with the highest standard of milling improvement now reached. They awarded the contract for the work to the well-known engineers and flour mill builders, Messrs. Goldie & McCulloch, of Galt, who have executed the undertaking in a manner worthy of their reputation, while the interior arrangements, after plans prepared by Mr. J. E. Wilson, their foreman in this department, are so obvi-

is the main line of shafting with pulleys, one large Galt improved separator, one Galt improved cockle machine and one large Galt improved smutter, two sets of large wheat brush machines, shoes and elevators for handling screenings and wheat from farmers' scales. Above, on the first floor, are four runs of millstones, twenty-four pairs of Galt improved roller mills, three Galt improved flour packers and three weigh scales. On the second floor are five purifiers, one Galt improved centrifugal