

**"FLEUR DE LIS"**  
**Galvanized Iron**

Works Well and Wears Well

JOHN LYSAGHT, LIMITED  
 Makers, Bristol

A. G. LESLIE & CO., LTD.  
 Montreal

10

**Dried Fruits.**—Raisins, Valencia, 5/4 to 6/4c.; seeded, 1-lb. packets, fancy, 7/4 to 8c.; 10-oz. packets, choice, 7 to 7 1/2c.; 12-oz. packets, choice, 7c.; Sultanas, good, 5 to 6c.; fine, 6 to 7c.; choice, 7 to 8c.; fancy, 8 to 9c.; Filiatras currants, 6 1/2 to 7c.; Vostizas, 8 1/2 to 9c.; uncleaned currants, 3/4c. lower than cleaned. California Dried Fruits.—Evaporated apricots, 15 to 16c. per lb.; prunes, 60s to 70s, 7 1/2 to 8c.; 90s to 100s, 6c.; evaporated apples, 8c. (38).

**Eggs.**—New laid, free receipts, good demand, 20 to 21c. per dozen, in case lots.

**Flour.**—Manitoba Flour.—Quotations at Toronto are:—First patents, \$5.60; second patents, \$5.10; strong bakers', \$4.90; 90 per cents., Glasgow freights, 28s. 6d. Ontario Flour.—Winter wheat patents, for export, \$4.20 to \$4.25, in buyers' sacks outside.

**Lard.**—In small supply, and again advanced. Tierces, 16 3/4c.; tubs, 17c.; pails, 17 1/2 to 17 3/4c.

**Molasses.**—Barbadoes, barrels, 37 to 45c.; West Indian, 27 to 30c.; New Orleans, 30 to 33c. for medium.

**Pork.**—Market very firm. Short cut, \$29 to \$30 per barrel; mess, \$27 to \$28. Light stocks and not much doing.

**Rice.**—B. grade, 3 1/2c. per lb.; Patna, 5 to 5 3/4c.; Japan, 5 to 6c.

**Salmon.**—Fraser River, talls, \$2; flats, \$2; River Inlet, \$1.55 to \$1.75.

**Smoked and Dry Salt Meats.**—Long clear bacon, 15 to 15 1/2c. per lb., tons and cases; hams, large, 17 to 17 1/2c.; small, 17 1/2 to 18c.; rolls, 15 to 15 1/2c.; breakfast bacon, 19 to 19 1/2c.; backs (plain), 20 to 21c.; backs (peameal), 21 to 21 1/2c.; shoulder hams, 13 1/2c.; green meats out of pickle, 1c. less than smoked. Market very firm.

**Spices.**—Allspice, 15 to 19c.; nutmegs, 30 to 75c.; cream tartar, 22 to 25c.; compound, 15 to 20c.; pepper, black, pure Singapore, 14 to 17c.; pepper, white, 20 to 30c.

**Sugar.**—Granulated, \$5.20 per 100 lbs., in barrels; Acadia, \$5.10; yellow, \$4.80; bags, 5c. lower.

**Syrup.**—Corn syrup, special bright, 3 1/2c. per lb.

**Teas.**—Japans, 20 to 35c. per lb.; Young Hysons, 16 to 35c.; Ceylons, medium, 16 to 45c.

**Vegetables.**—Beans, hand-picked, \$2.35; prime, \$2.25; stocks light, market firm; beets, 85c. a bag; carrots, 60 and 65c. a bag; onions, \$1.25 a bag; potatoes, best, 65 and 70c. a bag; turnips, 45c. a bag. (38).

**TORONTO HORSE MARKET.**

Two hundred and forty horses were sold at the Horse Exchange of the Union Stock Yards last week. These were mostly heavy drafters and were scattered all the way from Newfoundland in the east to the Prairie Provinces in the West.

The best car averaged \$250 per head, while the general run was from \$180 to \$225. General purpose horses are going from \$160 to \$190, express and wagon horses \$150 to \$225, drivers \$150 to \$250, and serviceably sound \$35 to \$80.

\* \* \* \*

Winnipeg, April 5th, 1910.

The Western market is very active indeed, and the mild weather of the past month still continues making things with the contractors and builders decidedly brisk. The weather could not be better for this time of year, and conditions are easily a month ahead of last year.

The enormous amount of large work offering in the West is very gratifying. There is a great deal of railway construction to be done, and several of the Western cities are calling for tenders for sewage and water-works improvements, and besides this there is a tremendous activity in building circles in all parts of the country, so that contractors in practically every line of business will have about all the work they can possibly do. There is considerable talk of a labor shortage, and before the season is much farther advanced it is felt that this will be the case. Farmers particularly are in need of help in all parts of the West. The supply dealers are already doing a greatly increased business,—lines particularly active being brick, lumber, which hold steady at usual prices. Cement is steady, and many inquiries are coming in for this season's supply. Sewer pipe and all waterworks' supplies are active just now, and good prices are being obtained.

Quotations on all lines are as follows:—

**Anvils.**—Per pound, 1 to 1 1/2c.; Buckworth anvils, 80 lbs., and up, 10 1/2c.; anvil and vice combined, each, \$5.50 (111, 132).

**Axes.**—Chopping axes, per dozen, \$6 to \$9; double bits \$12.10 per dozen.

**Barbed Wire.**—4 point and 2 point, common, \$3.15 per cwt.; Baker, \$3.20; Waukegan, \$3.30.

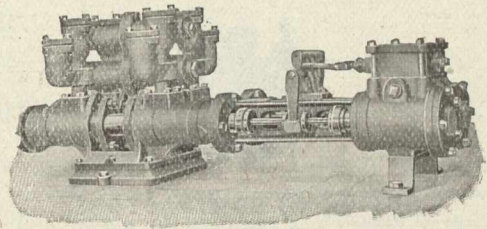
**Bar Iron.**—\$2.50 to \$2.60.

**Bars.**—Crow, \$4 per 100 pounds. (119)

**Beams and Channels.**—\$3 to \$3.10 per 100 up to 15-inch. (4, 30, 41, 50, 118, 119, 127, 132, 145, 176.)

**Boards.**—No. 1 Common Pine, 8 in. to 12 in., \$38 to \$45; siding, No. 1

Power and Steam Pumps, Rotary and Force Pumps, Condensers, Travelling Cranes, etc. Write for Catalogue.



—THE—  
**SMART-TURNER MACHINE CO., Limited**  
 Hamilton, :: Canada

White Pine, 6 in., \$55; cull red or white pine or spruce, \$24.50; No. 1 Clear Cedar, 6 in., 8 to 10 ft., \$60; Nos. 1 and 2 British Columbia spruce, 4 to 6 in., \$55; No. 3, \$45.

**Bricks.**—\$10, \$11, \$12 per M, three grades.  
**Building Paper.**—4 1/2 to 7c. per pound. No. 1 tarred, 84c. per roll; plain, 60c.; No. 2 tarred, 62 1/2c.; plain, 56c.

**Coal and Coke.**—Anthracite, egg, stove or chestnut coal, \$9.75 large lots to \$10.50 ton lots, net; Alleghany soft coal; carload lots, basis, Winnipeg, f.o.b., cars, \$6 per ton; cannel coal, \$10.50 per ton; Galt coal, \$2 f.o.b., carload lots, \$9 single ton; coke, single ton, \$7 at yard; large lots, special rates. American coke, \$11 to \$11.50 a ton; Crow's Nest, \$10 a ton.

**Copper Wire.**—Coopered market wire, No. 7, \$4 per 100 lbs.; No. 6, \$4; No. 10, \$4.06; No. 12, \$4.20, No. 14, \$4.40; No. 16, \$4.70.

**Cement.**—\$2.25 to \$2.50 per barrel, in cotton bags.

**Chain.**—Coil, proof, 3/4-inch, \$7; 5-16-inch, \$5.50; 3/8-inch, \$4.90; 7-16-inch, \$4.75; 1/2-inch, \$4.40; 5/8-inch, \$4.20; 3/4-inch, \$4.05; logging chain, 5-16-inch, \$6.50; 3/8-inch, \$6; 1/2-inch, \$8.50; jack iron, single, per dozen yards, 15c. to 75c.; double, 25c. to \$1; trace-chains, per dozen, \$5.25 to \$6.

**Copper.**—Tinned, boiler, 26 1/2c.; planished, 29 1/2c.; boiler and T. K. pits, plain, tinned, 45 per cent. discount.

**Dynamite.**—\$11 to \$13 per case.  
**Hair.**—Plasterers', 80 to 90c. per bale.

**Hinges.**—Heavy T and strap, per 100 lbs., \$6 to \$7.50; light, do., 65 per cent.; screw hook and hinge, 6 to 10 inches, 5 1/2c. per lb.; 12 inches up, per lb., 4 1/2c.

**Galvanized Iron.**—Apollo, 10 1/2, \$4.90; 28, \$4.70; 26, \$4.30; 22, \$4.10; 24, \$4.10; 20, \$4; 18, \$3.95; 16, \$3.90; Queen's Head, 28, \$4.90; 26, \$4.70; 24, \$4.30; 22, \$4.30; 20, \$4.10 per cwt.

**Iron.**—Swedish iron, 100 lbs., \$4.75 base; sheet, black, 14 to 22 gauge, \$3.75; 24-gauge, \$3.90; 26-gauge, \$4; 28-gauge, \$4.10. Galvanized—American, 18 to 20-gauge, \$4.40; 22 to 24-gauge, \$4.65; 26-gauge, \$4.65; 28-gauge, \$4.90; 30-gauge, \$5.15 per 100 lbs. Queen's Head, 22 to 24-gauge, \$4.65; 26-gauge English, or 30-gauge American, \$4.90; 30-gauge American, \$5.15; Fleur de Lis, 22 to 24-gauge, \$4.50; 28-gauge American, \$4.75; 30-gauge American, \$5. (119).

**Lead Wool.**—\$10.50 per hundred, \$200 per ton, f.o.b., Toronto.  
**Lumber.**—No. 1 pine, spruce, tamarac, British Columbia fir and cedar—2 x 4, 2 x 6, 2 x 8, 8 to 16 feet, except 10 feet, \$27; 2 x 20 to 2 x 40, up to 32 feet, \$40.

**Nails.**—\$4 to \$4.25 per 100. Wire base, \$2.85; cut base, \$2.90.

**Picks.**—Clay, \$5 per dozen; pick mattocks, \$6 per dozen; clevises, 7c. per lb. (132)

**Pipe.**—Iron, black, per 100 feet, 3/4-inch, \$2.50; 3/8-inch, \$2.80; 1/2-inch, \$3.40; 1/4-inch, \$4.60; 1-inch, \$6.60; 1 1/4-inch, \$9; 1 1/2-inch, \$10.75; 2-inch, \$14.40; galvanized, 3/4-inch, \$4.25; 1/2-inch, \$5.75; 1-inch, \$8.35; 1 1/4-inch, \$11.35; 1 1/2-inch, \$13.60; 2-inch, \$18.10. Lead, 6 1/2c. per lb.

**Pitch.**—Pine, \$6.50 per barrel; in less than barrel lots, 4c. per lb.; roofing pitch, \$1 per cwt.

**Plaster.**—Per barrel, \$3.  
**Roofing Paper.**—60 to 67 1/2c. per roll.

**Rope.**—Cotton, 3/4 to 1 1/2-in. and larger, 23c. lb.; deep sea, 16 1/2c.; lath yarn, 9 1/2 to 10 1/2c.; pure Manila, per lb., 13 1/2c.; British Manila, 11 1/2c.; sisal, 10 1/2c. (132)

18 to 20-gauge, \$4.40; 22 to 24-gauge, \$4.65; 26-gauge, \$4.65; 28-gauge, \$4.90; 30-gauge, \$5.15 per 100 lbs. Queen's Head, 22 to 24-gauge, \$4.65; 26-gauge English, or 30-gauge American, \$4.90; 30-gauge American, \$5.15; Fleur de Lis, 22 to 24-gauge, \$4.50; 28-gauge American, \$4.75; 30-gauge American, \$5. (119)

**Spikes.**—Basis as follows:—1 1/4 x 5 and 6, \$4.75; 5-16 x 5 and 6, \$4.40; 1/2 x 6, 7 and 8, \$4.25; 3/4 x 8, 9, 10, and 12, \$4.05; 25c. extra on other sizes.

**Steel Plates, Rolled.**—3-16-in., \$3.35 base; machinery, \$3 base; share, \$4.50 base; share crucible, \$5.50; cast share steel, \$7.50; toe calk, \$4.50 base; tire steel, \$3 abse; cast tool steel, lb., 9 to 12 1/2c.

**Staples.**—Fence, \$3.40 per 100 lbs. (119).

**Timber.**—Rough, 8 x 2 to 14 x 16 up to 32 feet, \$36; 6 x 20, 8 x 20, up to 32 feet, \$40.

**Tool Steel.**—8 1/2 to 15c. per pound.