

Prices Seem Low Enough

With our wheat relatively the cheapest in the world, prices seem low enough. Farmers can now very well consign. We are in a first class position to look after your consignments, and sell same when a little strength in the market comes. Get our bids on track. They will interest you.

BLACKBURN & MILLS

(A. M. BLACKBURN)

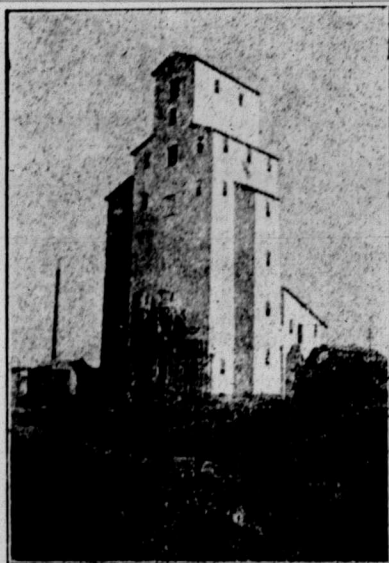
(D. K. MILLS)

531 Grain Exchange Telephones Main 46 and 3570 Winnipeg, Man.

N. M. Paterson & Co.

262-266 Grain Exchange, Winnipeg

Elevators:
St. Boniface
Man. and
Fort William
Ont.



Members of
Winnipeg
Grain
Exchange

You want quick returns on your Grain and the highest prices. Have your grain unloaded in Winnipeg. Consign your cars to the Paterson Elevator, St. Boniface, and send bills of lading to us or to your commission agent. Government Weights and Grades. A trial car will convince you.

MacLennan Bros. Limited, Winnipeg

Wheat, Oats Car Lots Option Trading Flax, Barley

NET BIDS Wired on Request CONSIGNMENTS Sold to the Highest Bidder

Agents wanted at every point where we are not represented. Write at once for terms

THE SQUARE DEAL GRAIN CO. LTD.

A STRAIGHT COMMISSION HOUSE

We stand for good faith towards shippers; competent service as selling agents; and promptness in attending to correspondence and in remitting advances and settlements. Try us.

B. A. PARTRIDGE, President and General Manager. W. E. McNAUGHTON, Office and Sales Manager.
OFFICE: 414 CHAMBERS OF COMMERCE, WINNIPEG, MAN.

SHIP YOUR GRAIN to PETER JANSEN CO.

GRAIN COMMISSION MERCHANTS

328 GRAIN EXCHANGE, WINNIPEG, MAN.

You Want Results We get Them for You

Write for Market Quotations. Send Samples and ask for Values.
Make Bill of Lading read "PETER JANSEN CO., PORT ARTHUR" or "FORT WILLIAM"

Please mention The Guide when writing to Advertisers

MIXING IN MINNEAPOLIS ELEVATORS

Millions of Bushels Raised in Grade

Minneapolis, Minn., Oct. 11.—The terminal elevators in Minnesota gained more than five million bushels of No. 1 Northern wheat as a result of mixing the wheat of lower grades during the crop year ending August 31, 1913, according to figures just made public by the state railroad and warehouse commission.

Practically all of the inferior grades lost in amount in the elevators as a result of the gain made in the No. 1 Northern. During the year the elevators received 17,566,059 bushels of No. 1 Northern. These same elevators shipped out 17,866,598 bushels, and on September 1 still had on hand 5,304,218 bushels. The total number of bushels of No. 1 Northern the elevators had and shipped out was 23,172,816. The total average amounted to 5,606,757.

The grain was purchased from the farmers on the grades that it went into the elevators and was naturally sold for the grade that it came out. The profit to the terminal elevators during the past year was enormous, according to those interested in the grain business.

Much of the No. 2 Northern that came in during the last crop year went to swell the No. 1 Northern in the elevators. While there were 11,148,039 bushels received only 7,622,650 bushels were shipped out, and there were on hand on August 31, 2,091,021. Here then there was a shortage of 2,091,021 bushels. This amount had been raised to No. 1 Northern.

The same story is told in the case of No. 3 Northern. The total amount received by the elevators was 3,288,412 bushels. By August 31 a total of 3,024,904 bushels had been shipped out and there was on hand 52,752 bushels. The shortage here was 210,756 bushels, all of which had gone to make up the higher grades.

With No. 4 Northern the same proposition is clear. The amount received was 15,246, and the amount shipped out was only 5,525. There was none on hand on August 31. The shortage in this grade was 11,723.

No Grade Shortage

In the No Grade classification the shortage is larger than in any other. The total amount of No Grade wheat received was 4,212,150. The amount shipped out was 1,210,295, and the amount on hand 282,954. The shortage was 2,718,901 bushels.

There was an overage in the rejected class of 131,522 bushels. The amount received was 886,185, and the amount shipped out was 912,831, and the amount on hand was 104,876. Much of the surplus here came from the No Grade wheat, according to inspectors in the service of the Railroad and Warehouse Commission.

With the publication of the figures on mixing for the crop year that has just ended Minnesota and Dakota farmers are again beginning to wonder just what they have gained by the mixing right which the elevators possess.

The figures only cover the public terminal elevators. There are hundreds of private elevators that do even more mixing than the public elevators. If the figures for all of the elevators in Minnesota that mix could be obtained, representatives of the Railroads and Warehouse Commission say, the results would be much more evident.

Farmers Were Anxious

Farmers who were interested in the legislative investigations into the grain situation last winter have been anxiously awaiting the publication of the results of mixing for the past crop year.

The crop was one of the largest ever harvested in the northwest. Much of the wheat was of a high grade.

Representatives A. F. Teighen, of Chippewa county, and C. M. Bendixon and others are considering some sort of legislation that will give the farmer more of a share of the result of the mixing. Representative Bendixon has been quoted as saying that he did not believe that the farmers were getting their full share of the enormous profit.

The farmers are paid for the wheat at the grade it goes into the elevators, he said, when the question was brought up. "The elevator men are the only ones who gain by the right to mix. There ought to be some legislation that will give the farmer some benefit from the privilege that is now permitted the elevator men." Congressman James A. Menahan, just

Grain Growers

We are specialists in the handling of carload shipments. Forward your cars. "Notify the Pioneer Grain Co. Limited." That will enable us to obtain best results for you and to check up the grading closely on arrival of the car here.

Shipments handled strictly on commission or net bids wired out at any time desired. Large advances on bills of lading and adjustments promptly made, accompanied by Government Certificate. Licensed and bonded.

The Pioneer Grain Co. LIMITED

Third Floor D, Grain Exchange, Winnipeg

before leaving for Washington, voiced the same sentiments. He has been considering for some time the feasibility of making some change in the laws governing the mixing of grain.

WHEAT IN STORAGE AT COUNTRY POINTS

The following figures show the amount of grain "in store" in country elevators (interior) west of Winnipeg, these figures being furnished by the three railway companies, viz:

Total grain in store—
C.P.R., Oct. 6 15,197,000 bus.
C.N.R., Oct. 6 7,680,000 "
G.T.P., Oct. 7 638,887 "

Total 23,515,887 "

The C.P.R. figures show 11,376,000 bushels of wheat and 3,830,000 bushels of other grain, which, in proportion, based on grain already inspected (new crop), would be as follows, viz:

C.P.R., oats 1,532,000 bus.
C.P.R., barley 1,532,000 "
C.P.R., flax 766,000 "

Total 3,830,000 "

The C.N.R. figures show 7,680,000 bushels—total grain—which, in proportion, based on grain already inspected (new crop), would be as follows, viz:

C.N.R., wheat 6,144,000 bus.
C.N.R., oats 614,400 "
C.N.R., barley 614,400 "
C.N.R., flax 307,200 "

Total 7,680,000 "

The actual figures reported by the G.T.P. line were:

G.T.P., wheat 394,189 bus.
G.T.P., oats 207,313 "
G.T.P., barley 24,803 "
G.T.P., flax 12,582 "

Total 638,887 "

GRAIN GROWERS' FLOUR MILL ACTIVE

Rapid City, Man., Oct. 10.—The output of the mill is proof of the immense business they are doing. Tuesday's shipment amounted to seven cars of flour, five via the C.N.R. and two via the C.P.R. The same afternoon an order was received for no less quantity than six carloads. This is a record for a day's business by the Milling Co. There is a great and growing demand for their product, which all are pleased to see.

The Grain Growers' new elevator is in operation and is receiving most if not all the grain from this district. The prices given before this elevator was in operation this fall were very unfavorable and the dockage very high, but it is hoped that this hold-up game is at an end.—Rapid City (Man.) Reporter.

IMPERIAL NATURALIZATION LAW

Rt. Hon. Herbert Samuel, the British postmaster-general, addressing the Canadian Club of Montreal on Friday announced that a bill had been prepared and would probably be passed at the next session of the Imperial Parliament, to make all persons who are British citizens anywhere in the Empire British subjects everywhere in the Empire. At present a foreign born settler who is naturalized in Canada is a British subject only while he remains in this country and ceases to be a British subject when he goes to Great Britain or to any other portion of the Empire. Joint action by all the overseas dominions will be necessary to carry the proposal for imperial naturalization laws into effect.

Wheat
a much 5
loss for t
The d
inquired
Foreign
grain off
ranean co
continued
crop cond
finishing
Oats—
Demand f
Barley
Flax—
last Satur

Wheat—
Oct. 7
Oct. 8
Oct. 9
Oct. 10
Oct. 11
Oct. 12
Oct. 13
Oats—
Oct. 7
Oct. 8
Oct. 9
Oct. 10
Oct. 11
Oct. 12
Oct. 13
Flax—
Oct. 7
Oct. 8
Oct. 9
Oct. 10
Oct. 11
Oct. 12
Oct. 13

MI

G

No. 1 hard
No. 1 hard
No. 1 Nor.
No. 1 Nor.
No. 2 Nor.
No. 2 Nor.
No. 3 wheat
No. 3 wheat
Rej. wheat
No grade wh
No grade wh
Durum whea
Durum whea
Screenings, 1
Mixed wheat
No. 3 white
No. 3 white
No. 3 oats, 1
No. 3 oats, 1
No. 4 white
Oats, 1 car, 2
Rye, 3 cars, 2
Barley, 1 car
Barley, 1 car
Barley, no gr
Barley, no gr
Barley, No. 2
Barley, No. 2
Barley, No. 1
Barley, No. 1
Barley, No. 4
Barley, No. 4
No. 1 flax, 1 c
No. 1 flax, 2 c

Date	1*
Oct 7	81 1/2
8	81 1/2
9	81 1/2
10	81 1/2
11	81 1/2
12	81 1/2

THE

Winnipeg C

Cash Wheat
No. 1 Nor.
No. 2 Nor.
No. 3 Nor.
No. 4 Nor.
No. 5 Nor.
No. 6 Nor.
Feed

Cash Oats

No. 2 C.W.

Cash Barley

No. 3 Nor.

Cash Flax

No. 1 N.W.

Wheat Futures

October
December
May

Oat Futures

October
December
May

Flax Futures

October
December
May