

## Business Men and Business Farmers Agree

In the great McGill Building in Montreal, where men of big business meet daily, immense quantities of Natco hollow tile were used. On many prosperous Canadian farmsteads the same hard-burned clay tile is the favorite for silos and farm buildings. Business men and business farmers alike agree on the material that is weatherproof, decayproof, frostproof, verminproof and fireproof. Such is the

### Natco Imperishable Silo

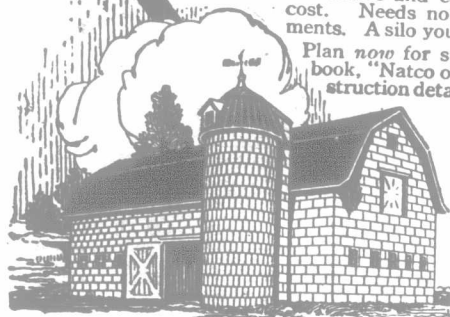
"The Silo that Lasts for Generations"

A perfect silage preserver, when the mercury is low, or summer pastures wither. Its salt glazed hollow vitrified clay tile are impervious to air and moisture. It is safe under severest wind or silage pressure. Convenient attractive and economical. First cost is the only cost. Needs no repairs or painting, no adjustments. A silo you'll be proud of.

Plan now for such a silo. Send for our free book, "Natco on the Farm." Describes construction details of all types of farm buildings. Fully illustrated. A book you should have before planning a new building.

Also be sure to send for our catalog describing fully the Natco Imperishable Silo.

Natco Silo Wall. Note perforations providing firm anchorage for mortar joints.



Tell us what you are thinking of building. We have plans for barns, corn cribs, garages, etc., free.

National Fire Proofing Company of Canada, Limited

1202 Dominion Bank Building  
Toronto - Ontario

## PEERLESS PERFECTION

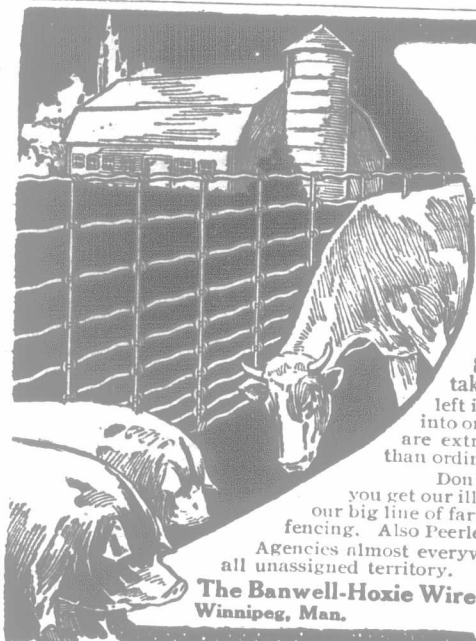
No matter how fast it comes, the most unruly animal can't break through a Peerless Perfection Farm Fence—it springs back into shape.

Made of heavy Open Hearth steel galvanized wire with all the impurities taken out and all the strength and toughness left in. Every wire is crimped making the fence into one continuous spring. Top and bottom wires are extra heavy. Will not sag. Requires less posts than ordinary fence. Absolutely guaranteed.

Don't buy a rod of fencing until you get our illustrated Catalog. Describes our big line of farm, poultry and ornamental fencing. Also Peerless farm gates.

Agencies almost everywhere. Agents wanted in all unassigned territory.

The Banwell-Hoxie Wire Fence Company, Ltd.  
Winnipeg, Man. Hamilton, Ont.



## For Private or Public Grounds

This "Ideal" Fence is ornamental, neat in appearance and strongly built. It is well suited to lawns, private grounds, parks or other places requiring a sturdy, artistic fence.

I  
D  
E  
A  
L  
  
F  
E  
N  
C  
E

## "Ideal" Lawn Fence

is made throughout of galvanized wire in many different artistic designs, with ornamental gates, completely equipped, to match each design.

The "Ideal" Lawn Fence booklet shows and describes the different styles, and explains the many advantages of a Wire Lawn Fence over either an iron or wooden fence.

Free illustrated booklet sent on request.

The McGregor Banwell Fence Co., Limited  
WALKERVILLE, ONTARIO

A chick in the hand is worth 2 in the shell

To raise all your chicks—to prevent bowel trouble, drooping wings and Baby Chick diseases, use

**Pratts Baby Chick Food**

Contains just what's needed to make bone, muscle, and feathers. Largely predigested, finely ground and packed in dust-proof bags and cartons at 25c, 50c and \$1.00. At your Dealer's.

PRATT'S White Diarrhoea Remedy used in the drinking water prevents and cures this dread disease. Write for FREE Book on the Care and Feeding of Baby Chicks.

PRATT FOOD CO. OF CANADA, Limited TORONTO P.41  
68 J. Claremont Street



## The New Series CHEVROLET FOUR-NINETY

STANDARD EQUIPMENT

- Valve-in-head motor.
- Streamline body.
- Electric lighting and starting system.
- Selective sliding gear transmission, 3 speeds forward and reverse.
- Speedometer.
- Staunch frame.
- New front and rear spring brackets.
- New front spring suspension.
- New accelerator foot rest.
- Oil indicator light equipment.
- Ample road clearance.
- Cantilever springs.
- Improved upholstery.
- Mohair top.
- Non-skid tires on rear wheels.

THE CHEVROLET MOTOR COMPANY OF CANADA, LIMITED  
OSHAWA, - - ONTARIO

WESTERN SERVICE AND DISTRIBUTING BRANCH: REGINA, SASK.

FIVE PASSENGER TOURING CAR FULLY EQUIPPED

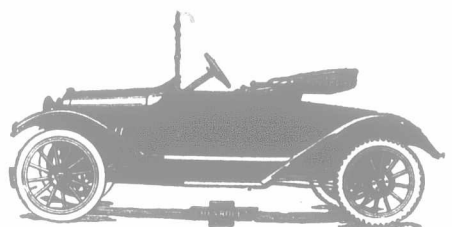
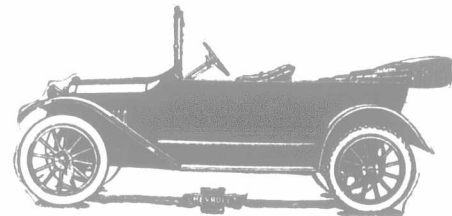
**\$695**

f. o. b. OSHAWA

CHEVROLET ROADSTER THE CAR FOR BUSINESS

**\$680**

f. o. b. OSHAWA



Send for Descriptive Literature.