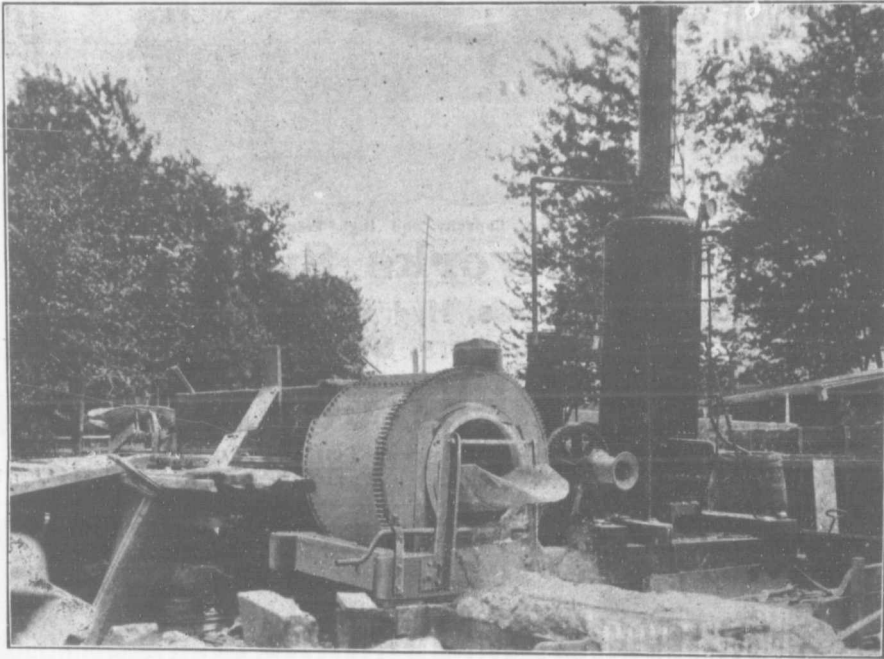


# **RANSOME**

---

## **CONCRETE MIXERS**

---



RANSOME MACHINE MIXING MORTAR ON MESSRS. JOHN QUINLAN  
& COY'S CONTRACT AT WESTMOUNT, NEAR MONTREAL.

RANSOME MIXERS by their many superior points of merit are forcing their way into many of the largest and best equipped plants in the country. For mixing Concrete, Mortar, Fireproofing, Etc., they are most efficient.

The RANSOME MACHINES have lower feed and discharge chutes than any other mixer. Under ordinary conditions, and fed from wheelbarrows, they will readily handle 30 batches per hour. The discharge is extremely rapid and material is discharged directly into wheelbarrows without being handled a second time.

**All Capacity—Any Combination of Power and Mounting.**

All we ask is an opportunity to explain the advantage of our mixer.

**F. H. HOPKINS & CO.**  
MONTREAL, QUE.