

A LIGHT TRACTOR AT LAST

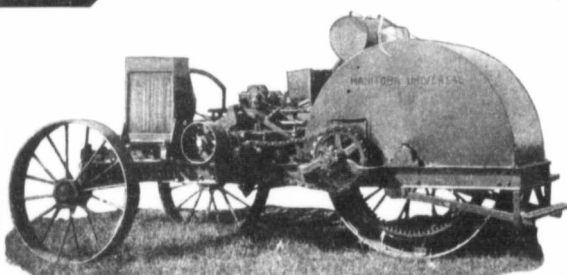
ARMERS!

There has at last been produced for you a LIGHT WEIGHT TRACTOR that will meet your every requirement.

There has at last been produced for you a **LIGHT WEIGHT TRACTOR** that will meet your every requirement.

Built in Western Canada to meet Western Canadian conditions, **THE MANITOBA UNIVERSAL FARM TRACTOR** is the last word in a light weight machine. It was designed and built by men who have made a thorough study of what the farmer really required, and, combining this knowledge with the best engineering practice, the result is a machine that is complete both in theory and practice.

NOTE THESE SPECIAL FEATURES: 1. **SIMPLICITY.** Simplicity is a word that has been applied to tractors by many manufacturers in the past, but the "Manitoba Universal" is the first to give the word a real tractor meaning. 2. **LIGHT WEIGHT.** It weighs but 1000 pounds, but with a maximum draw-bar efficiency. Field practice for the past five years gives 2000 pounds per plow as the correct tractor weight. 3. **THE 5x6 MOTOR** has a large amount of surplus power, making the tractor adapted to all conditions of soil. 4. **THE MOTOR** is a complete unit. It has gear-driven pump, magneto, oiler and governor, making the working of these parts positive at all speeds. 5. **DIRECT FULL AT DRAWBAR,** thus eliminating side draft, both on the tractor and the implement being operated. 6. **MOST SIMPLE AND NOVEL SPEED CHANGES.** The tractor speed can be changed from 7 to 20 miles per hour in less than a minute, and the gear which makes it perfectly adapted to pulling any farm implement, including the heaviest, is built to withstand any strain that may be put upon it. It is built for every day, hard work in the field and on the left.



Be sure to see this tractor on
exhibition at Brandon Fair.

As only a limited number of these tractors are being built for the 1965 trade, it will be a case of first come, first served. Better get your order in early and enjoy the satisfaction of owning a real **LIGHT WEIGHT FARM TRACTOR**.

SPECIFICATIONS: MOTOR, 4 cycle double opposed, 5-inch bore and 6 1/2-inch stroke; magnetos, force sight feed, oiler, water pump and governor attached.

Price \$697.⁰⁰

F.O.B. WINNIPEG

\$657.-
WINNIPEG

and first
LIGHT

The Manitoba Universal Farm Tractor Co. Ltd.
WINNIPEG, MAN.

Please send me descriptive literature regarding
light weight tractors
Farm farming

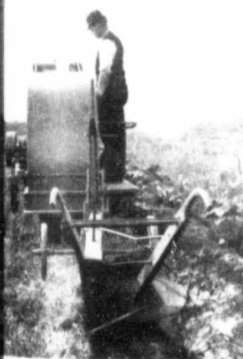
Name _____
Town _____
Prov. _____

The Manitoba Universal Farm Tractor Co. Ltd.

WINNIPEG, CANADA

A New Tractor Industry for Western Canada

During the past few months there has been quietly growing into existence a new tractor industry for the Canadian West. Born of Western enterprise and



capital it has been named the Manitoba Universal Farm Tractor and is manufactured by the Mani-

toba Universal Farm Tractor
Co. Limited.

This machine, while designed along certain lines that have previously been known to the public, contains many features that are distinctly novel. In the first place its light weight will commend it to a large army of buyers, the weight only being 4,000 pounds. There is a reason for this. It has been demonstrated during the past four or five years that 2,000 pounds per plow is the logical weight of a machine, provided that the maximum amount of tractive efficiency can be obtained. The Manitoba Universal gives a maximum of tractive efficiency on account of its design.

In the first place it has three wheels, the drive wheel being at the rear. This has a wide face and as it runs upon the land it gives a straight drawbar pull, doing away with side draft absolutely. In the second place there are only two gear pinions between the engine and the main drive wheel, the power being transmitted by a chain. In this way friction is reduced to a minimum.

The motor has a five inch bore

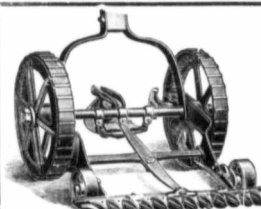


and a six and a half inch stroke, and is so designed that the governor force feed oil pump and magneto are all gear driven, a unit with the motor itself. In this way positive action is secured making the motor as near trouble proof as possible.

The machine will pull two 14-inch plows in sod and three 12-inch plows in stubble and do it with ease.

A trip through the plant of the Manitoba Universal Farm Tractor Co. shows one that the company

is out for business. Everywhere about the plant is a quantity of parts either complete or being gotten ready for the erection of a large number of tractors. The first lot of ten machines is through the factory and material is on hand for a great many more. A great deal of special machinery has been installed both for the building and erecting of the machines. Every part is being



The Lawn Mower

You Have Been Looking For

Will cut grass which has grown too high for the ordinary lawn mower and which is difficult to cut with the scythe. Will cut weeds and grass over any kind of surface.

Imperial Supply Co.
General Distributors
230 MAIN STREET. P. O. BOX 326
WINNIPEG