

---

## *Water Powers of Canada*

---

The Carillon Rapids on the Ottawa River, between Quebec and Ontario Provinces, is capable of developing 160,000 h.-p. It is important on account of its proximity to Montreal.

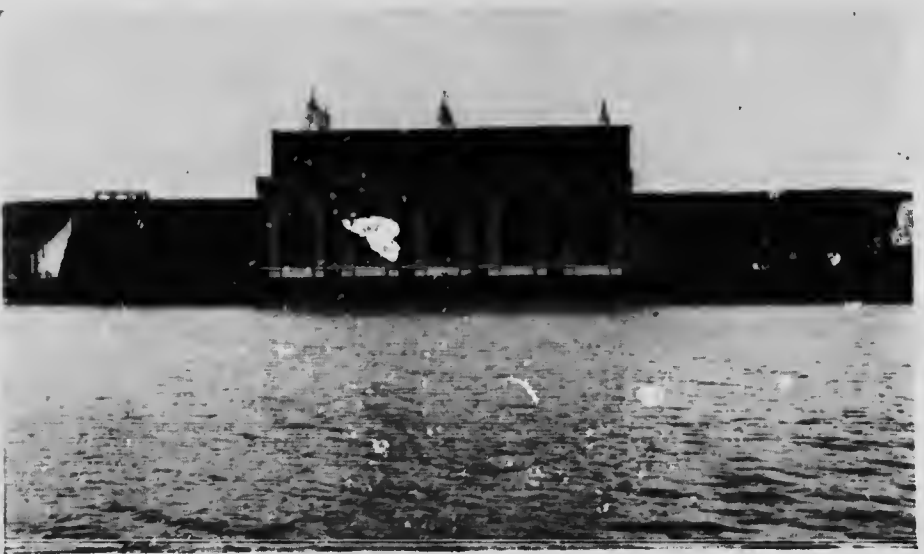
There are several smaller rivers in the Ottawa District whose falls and rapids could be turned to great industrial use.

### MONTREAL DISTRICT

THE Montreal District embraces that portion of the St. Lawrence and its tributaries on both shores between the Rivers Ottawa and St. Maurice. The only large water powers in this region are on the St. Lawrence, although there is considerable available power on various tributaries, some of which is already developed. The Cedars and Cascade Rapids situated about thirty-five miles from Montreal on the St. Lawrence, and having a fall of thirty feet, are capable of generating 500,000 h.-p. At present developments are being carried out by the Cedars Rapids Manufacturing & Power Company, and when complete will have an output of 180,000 h.-p.

The present installation comprises nine turbine units of the vertical type, each developing 10,000 h.-p. of which 60,000 h.-p. is being transmitted to Aluminum Works at Massena, and the remainder to Montreal.

On the opposite side of the St. Lawrence, the Canadian Light and Power Company's plant at St. Timothee is furnishing about 20,000 h.-p. to Montreal mainly for the Tramways. This development when completed will consist of ten 5,000 K.W. generators, 50,000 in all.



Power House of Canadian Light and Power Company, St. Timothee.