

THE LATEST SHIPPING NEWS AND ANNOUNCEMENTS

MARINE NOTES OF THE WORLD

SCHOONER PAUL PALMER DESTROYED BY FIRE AND SUNK.

Recent Charters—Dangers to Navigation—Stmr. Briardene Arrives—Icebergs Reported.

BRIARDENE ARRIVES.
The steamer Briardene, Capt. Paul Palmer, arrived yesterday from Demerara and the West Indies. Her cargo consisted of molasses, sugar and coconuts.

BURNED AND SUNK.

Provincetown, Mass., June 18.—Schr. Paul Palmer, bound light from Bangor, Me., for a coal port, was burned to the water's edge 7 miles north of Race Point, Cape Cod, late today. Captain Allen and the crew were taken off by the crew of the fishing schooner Vigilant. The schooner after being abandoned sunk six miles north by east from Race Point. Three masts attached to the broken rigging, floated above the wreck. Cutter Androsoggin will destroy the bulk. The crew of the Palmer were landed by a fishing schooner at Provincetown last night.

DANGERS TO NAVIGATION.

Stmr. Beta (Ger.), reports June 10, lat 38.16 N, lon 72.23 W, saw a broken mast standing upright and projecting about 6 feet out of water.

Stmr. Montfort reports June 1, lat 45.37, lon 44.48, passed a large iceberg; lat 48.02, lon 46.35, a large berg; lat 47.55, lon 47.12, a very large berg; lat 48.03, lon 47.27, a very large berg.

On June 8, in lat 45.40 N, lon 124.07 W, a large tree about 90 feet long with roots and branches was sighted. Stmr. San Juan reports June 6, lat 30.12 N, lon 116.33 W, passed a large log about 30 feet long and 4 feet in diameter.

June 18.—The following report has been received from revenue cutter Seneca: Baiting, no new reports; apparently only three bergs between lon 42 and lon 45 W, lat 43 and lat 44 N, moving eastward about 15 miles a day.

Stmr. Glenaem (Br.), reports June 9, lat 42.39 N, lon 66.44 W, passed a lead colored cantal buoy, with a black band, floating about 12 feet out of water.

Stmr. Corsican (Br.), reports June 6, lat 48.12, lon 47.40, passed an iceberg; lat 48.02, lon 48.33, three bergs; lat 48.03, lon 48.46, a large growler; and lat 47.43, lon 49.01, a large berg. Revenue cutter Seneca reports June 15 as follows: "Have cruised from Grand Banks to north branch of Gulf Stream as far as lat 47 N; saw no ice."

RECENT CHARTERS.

British steamer, 17,000 cases petroleum, Philadelphia to two ports in Japan, 25 1/2 cents; July; British str. tons, nickel ore, New Caledonia to one or two ports United States, 36s 6d and 37s 6d; August; British str. 2425 tons, coal, Baltimore to Rio Janeiro, 17s 6d; prompt; British str. 2216 tons, trans-Atlantic trade, one trip on time charter, 7s, delivery north of Hatteras, July; British str. 2821 tons, deals, Campbellton to Waterford and Cardiff, 26 3/4; July; British str. 1947 tons, deals, Bay Chaleur to West Britain or East Ireland, 52s 6d; July; August; British str. 2968 tons, time charter, 12 months, 14s, delivery to the United States, private terms; June; British str. 1947 tons, time charter, 12 months, 14s, delivery United Kingdom or Continent, June; British str. 2968 tons, West India trade, one round trip, 3s, prompt.

THE KANAWHA.

The Puruss line ship arrived at St. John's, Nfld., on the 14th inst. from London, which port she left ten days ago. Favorable weather was met during the trip until near and that port, when head winds and dense fog were run into.

TEN YEARS' CHARTER.

The Nova Scotia Steel and Coal Company has secured a ten years' charter of the new steamers Wagona and Wascana, recently built on the Tyne. Each of these steamers carries 8,000 tons dead weight, and will be operated between the Tyne, and North Sydney and between North Sydney and Montreal, in the coal and ore trades.

YOUNG SHIP MASTER.

Halifax Recorder: One of the youngest of the Nova Scotians who have qualified for a first class master's certificate enabling one to assume charge of any mercantile steamship about is Capt. Lawrence Mitchell, of Jeddore, who left Halifax on Tuesday for Quebec to take passage by the S. S. Virginian for England. Capt. Mitchell is but 25 years old and his present visit marked the end of a six years' absence from home. His career since starting as ship's boy on the schooner Piermont, eight years ago, reflects credit on his ambition and ability.

MINIATURE ALMANAC.

June Phases of the Moon.
New Moon, 4th . . . 11h. 58m.
First quarter, 11th . . . 12h. 37m.
Full moon, 18th . . . 12h. 54m.
Last quarter, 25th . . . 11h. 41m.

Date.	Day of Week.	Sun Rises.	Sun Sets.	H. Water a.m.	H. Water p.m.
19	Th	4.41	8.08	1.12	6.02
20	F	4.41	8.09	1.13	6.04
21	S	4.41	8.10	1.01	6.05
22	Sa	4.41	8.10	1.45	6.06
23	M	4.42	8.10	2.31	6.06

VESSLS BOUND TO ST. JOHN

Steamers.
Kanawha, London, June 4.
Moeris, 2,192, W M MacKay, Liverpool May 30.
Inchra, 2,339, Robt Reford, Glasgow, June 11.
Beeswing, 1,252, J E Moore & Co., (due today).

VESSLS IN PORT.

Steamers.
Briardene, 1723, Wm Thomson & Co. Sculptor, 2470, W M MacKay.
Schooners.
Elma, 239, A W Adams.
Sallie E Ludlam, 199, D J Purdy.
Harry Morris, 98, C M Kerrison.
Ralph M Hayward, 338, J T Knight & Co.
Minnie Shalson, 271, A W Adams.
Joanna, 384, P McIntyre.
Ozumbo, 121, A W Adams.
Rameo, 111, Peter McIntyre.
Parina, 99, J W Smith.
Helen G Kms, 126, A W Adams.
Two Sisters, 89, C M Kerrison.

PORT OF ST. JOHN, N. B.

Arrived Wednesday, June 18.
Steamer Briardene, 1723, Fulkner, Demerara and West Indies, Wm Thomson & Co., general.
Coastwise—Schr. Leonie, 27, Payson, Yarmouth; Harry L, 7, Boudreau, Church Point and cld; stmr Brunswick, 72, Moore, Bass River; Harbinger 46, Rockwell, River Hebert.
Cleared.
Steamer Manchester Mariner, Spencer, Philadelphia, Wm Thomson & Co. Coastwise—Stmr Brunswick, Moore, Parrishboro; schr Ripply, Brown, Grand Harbor; stmr Harbinger, Rockwell, River Hebert; schr Elhu Burret, Glaspy, Jostis Mines.
Sailed.
Steamer Calvary, Austin, Mitchell, Boston via Maine ports.

DOMESTIC PORTS.

Quebec, June 17.—Arr stmr Engleishman, Avonmouth; Welshman, Liverpool; Montrose, Antwerp.
St. Stephen, June 18.—Arr schr Roger Drury; Sam Slick, Joggins.
Montreal, June 17.—Arr stmr Scotland, London and Havre; Letitia, Glasgow.
Cld stmr Royal Edward, Bristol; Monmouth, Liverpool; Pomeranian, London and Havre.
Sydney, June 17.—Arr stmr Alma Mariana (Ital), Montreal; Prince Rupert, Port Arthur.
Sld stmr Prince Rupert, Port Arthur.

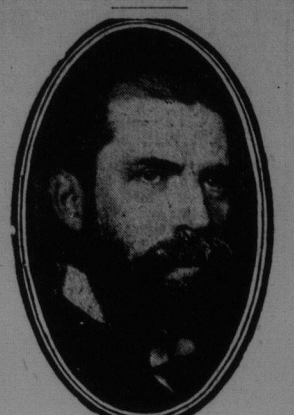
FOREIGN PORTS.

New York—Arr June 17, schs Chas C. Lister, St. John; Lucille, Windsor.
Vineyard Haven—Sld June 17, schs Hugh John, St. Croix; Grace Davis, New York.
Boston—Arr June 16, schs Virginia, Apple River, NS; Ontario, Yarmouth, NS.
Cld 16th, schs Alton, Salmon River, NS; Boba, Clementsport, NS; Otis Miller, Parrishboro.
Stonington, Conn—Sld June 16, schs T W Cooper, St. John, NB.

BRITISH PORTS.

Liverpool, June 17.—Arr stmr Mauretania, New York.
Sld 17th, stmr Teutonic, Montreal.
Fishguard, June 17.—Arr stmr Franconia, Boston.
Greenock, June 16.—Arr stmr Michael

JUSTICE HUGHES ASSURES STATES



Justice of the United States Supreme Court Charles Hughes says that the Federal Commerce act was not intended to hamper the States.

Ontholhoff (Dan), Neilsen, Newcastle, N. B.
Port Natal, June 17.—Arr stmr Ben-In, St. John.
Instrahull, June 17.—Passed stmr Rathwaite, Campbellton.
Brow Head, June 17.—Signalled stmr Wittekind, Montreal.
Bristol, June 17.—Sld stmr Royal George, Montreal.
Cardiff, June 15.—Sld stmr Gogovale, McMillan, Parrishboro, N. S.
Garston, June 15.—Arr stmr Consul Olsson (Sw), Stromberg, New Mills.
Manchester, June 15.—Arr stmr Manchester Inventor, Everest, Montreal.
Sld 14th, stmr Bjorjovin, Sorensen, Sydney, C. B.

SENT TO REFORMATORY.

The young lad named Thompson, alias Taylor, who was caught breaking into Nelson's confectionary store situated at the western side of the Suspension Bridge, was sentenced to four years in the Reformatory by Magistrate Allingham in the Fairville court on Tuesday afternoon. The boy's father, who was present, stated that he could do nothing with him and was of the opinion that under the circumstances the Reformatory was the best place for him. A week ago young Thompson was arrested for stealing a bicycle.

ASSAULT CASES HEARD.

In the police court yesterday morning Timothy Boyle was fined \$8 for abusive language. George Paddock was fined \$20 on a wife-beating charge. Frank Bell was charged with assaulting Mrs. Dolan Perce and stealing her watch and was remanded after the woman had given evidence. Harry Howe, charged with being drunk, using profane language and resisting the police, was fined \$8 or two months each on the first two charges, and \$48 or six months on the last, a total of ten months or \$54.

HON. MR. CODERRE TO MAKE WESTERN TOUR

Will Accompany Geologists as Far as Yukon—Wants to Get First Hand Knowledge of Conditions.

Ottawa, June 17.—The Hon. Louis Coderre, who is Minister of Mines as well as Secretary of State, intends, this summer, to make a western tour which will take him as far as Dawson. The minister's tour will take place in August when he will accompany the members of the geological conference from Toronto to the Pacific coast and into the Yukon. Mr. Coderre's purpose is to familiarize himself with the natural conditions of the Dominion and to acquire at first hand information as to the problems of the department over which he presides.

ROBERT W. HAWKER PASSES FINAL EXAMINATION FOR DRUGGIST.

Fredericton, June 18.—A meeting of the Council of the N. B. Pharmaceutical Society was held last evening at the Barker House, when the report from the examiners regarding the recent examinations held at St. John was received and confirmed. Those passing the final examinations were F. Patterson, of New Glasgow, N. S., and Robert W. Hawker, of St. John. The latter is a grandson of William Hawker, formerly of this city, and makes three generations of the Hawker family in the drug business in St. John.

STEAMSHIPS.

MANCHESTER LINE

S. S. Manchester Exchange will close at Manchester July 3rd, taking cargo for St. John direct and Maritime Province points. Sailing from St. John July 19, taking cargo for Philadelphia.

WM. THOMSON & CO., Agents

Steamer Champlain

Until further notice steamer will leave wharf, North End, on Tuesday and Thursday, at 12 o'clock noon on Saturday at 2 p. m., for Hatfield's Point and intermediate landings, returning alternate days, due in St. John at 1.30 p. m. Positively no freight received after 1.30 p. m., Saturday.

R. S. ORCHARD, Manager

Canadian Northern.

"Atlantic Royals"

St. Lawrence Route.

Comfort for All Classes
That's the keynote of the service on the Atlantic Royals. It's the attentive regard for the comfort and pleasure of each passenger expressed in accommodation—seats—and up-to-date equipment that has made the Turbine Steamships

R. M. S. Royal Edward

deservedly famous among experienced travellers. Then in addition to being most modern, both are the fastest in the British-Canadian service. But, write for descriptive booklets in color. They're well worth reading.

Ly. Montreal, Steamer, Ly. Bristol, Eng. Tues, May 29 Royal Edward Tues, June 4
Rus, June 11 Royal Edward Tues, June 17
Tues, July 1 Royal George Tues, July 15
Wed, July 13 Royal Edward Sat, July 13
Sat, July 20 Royal George Sat, Aug 9
Sat, Aug 9 Royal Edward Sat, Aug 23
Sat, Sept. 6 Royal Edward Sat, Sept. 20

Ask any agent or write P. MOONEY, General Agent, 125 Hollis St., Halifax.

Canadian Northern Steamships Limited

COAL AND WOOD

Old Mine Sydney,

Broad Cove and Pictou Soft COALS

Scotch and American Hard BEST AMERICAN CUMBERLAND BLACK-SMITH COAL

J. S. GIBBON & CO.

1 Union Street, Telephone, N 2638.

COAL

SPRING PRICES

American Anthracite

have been fixed, and we are now in a position to take orders at lowest prices.

R. P. & W. F. STARR, Ltd

49 Smythe St. 225 Union St.

We are now booking orders at lowest prices for Scotch and American Anthracite

Foot Germain St. Geo. Dick

Telephone 1116 46 Britain St.

Scotch and American Coal

Now ready to be delivered, 160 Tons American Chestnut Coal. I am ready to take orders for SCOTCH ANTHRACITE COAL, for summer delivery.

James S. McGivern, 6 Mill St. Tel. 45.

For Sale

The Schooner CALABRIA, of 481 Tons Register, and Schooner ORIOLE of 134 Tons Register. Enquire of J. SPLANE & CO., 61 and 63 Water St., St. John, N. B.

YOU TAKE NO CHANCES IN USING POSLAM

If you need its marvelous healing effects, do not hesitate to use Poslam, for it cannot possibly harm. It contains no mercury or other poisonous ingredients, and proves immediately grateful, cooling and soothing. All itching stops.

For the prompt relief and cure of eczema, acne, teases, barbers' itch and all other skin troubles, Poslam is the most efficient healing remedy yet evolved.

In the lesser affections, such as pimples, red noses, complexion blemishes, rash, scalp troubles, itching scalp, results are seen overnight, only a small quantity being required.

POSAM SOAP keeps the skin secure against infection and disease. Improves its color and texture, soothes tender skin, makes complexion clear. All druggists sell Poslam and Poslam Soap. For free samples, write to the Emergency Laboratories, 39 West 25th Street, New York City

RAILWAYS.

CANADIAN PACIFIC

Summer Tourist TICKETS NOW ON SALE \$123.80 ST. JOHN TO NORTH PACIFIC COAST AND CALIFORNIA DESTINATIONS.

Special Pacific Coast Convention Fares on Sale to Public certain dates during Summer.

Full information on application to W. B. HOWARD, D.P.A., C.P.R. ST. JOHN, N. B.

STEAMSHIPS.

INTERCOLONIAL RAILWAY

Summer Change of Time JUNE 22ND Particulars of Train Service will be announced shortly.

THE OCEAN LIMITED

Will perform the Service BETWEEN St. John, Halifax and Montreal

Connection from St. John by No. 4 Express (Boston Train.)

Local and Suburban Trains will continue on Present Schedule

THE INTERNATIONAL RAILWAY

Uniting Campbellton at the head of navigation on Bay Chaleur with the St. John River Valley at St. Leonard's and connecting the Intercolonial and Canadian Pacific Railway systems.

Summer Time Table Summary

Commencing Monday, June 9.

GOING WEST.

Express train leaves Campbellton daily (except Sunday), at 8.00 a. m. for St. Leonard's and intermediate stations, due at St. Leonard's at 12.30 p. m.

GOING EAST.

Express train leaves St. Leonard's daily (except Sunday), at 4.45 p. m. after arrival of C. P. R. express from St. John, Vancouver, etc., due at Campbellton at 8.15 p. m.

In addition to above and to the ordinary freight trains, there is also a regular ACCOMMODATION TRAIN carrying passengers and freight running each way on alternate days as follows, viz: Going West—Leaves Campbellton at 8.30 a. m. for St. Leonard's, and intermediate stations, Monday, Wednesday and Friday, due at St. Leonard's at 4.10 p. m.

And in addition to above and to the ordinary freight trains, there is also a regular ACCOMMODATION TRAIN carrying passengers and freight running each way on alternate days as follows, viz: Going West—Leaves Campbellton at 8.30 a. m. for St. Leonard's, and intermediate stations, Monday, Wednesday and Friday, due at St. Leonard's at 4.10 p. m.

GOING EAST.

Express train leaves St. Leonard's daily (except Sunday), at 4.45 p. m. after arrival of C. P. R. express from St. John, Vancouver, etc., due at Campbellton at 8.15 p. m.

In addition to above and to the ordinary freight trains, there is also a regular ACCOMMODATION TRAIN carrying passengers and freight running each way on alternate days as follows, viz: Going West—Leaves Campbellton at 8.30 a. m. for St. Leonard's, and intermediate stations, Monday, Wednesday and Friday, due at St. Leonard's at 4.10 p. m.

And in addition to above and to the ordinary freight trains, there is also a regular ACCOMMODATION TRAIN carrying passengers and freight running each way on alternate days as follows, viz: Going West—Leaves Campbellton at 8.30 a. m. for St. Leonard's, and intermediate stations, Monday, Wednesday and Friday, due at St. Leonard's at 4.10 p. m.

GOING EAST.

Express train leaves St. Leonard's daily (except Sunday), at 4.45 p. m. after arrival of C. P. R. express from St. John, Vancouver, etc., due at Campbellton at 8.15 p. m.

In addition to above and to the ordinary freight trains, there is also a regular ACCOMMODATION TRAIN carrying passengers and freight running each way on alternate days as follows, viz: Going West—Leaves Campbellton at 8.30 a. m. for St. Leonard's, and intermediate stations, Monday, Wednesday and Friday, due at St. Leonard's at 4.10 p. m.

GOING EAST.

Express train leaves St. Leonard's daily (except Sunday), at 4.45 p. m. after arrival of C. P. R. express from St. John, Vancouver, etc., due at Campbellton at 8.15 p. m.

In addition to above and to the ordinary freight trains, there is also a regular ACCOMMODATION TRAIN carrying passengers and freight running each way on alternate days as follows, viz: Going West—Leaves Campbellton at 8.30 a. m. for St. Leonard's, and intermediate stations, Monday, Wednesday and Friday, due at St. Leonard's at 4.10 p. m.

GOING EAST.

Express train leaves St. Leonard's daily (except Sunday), at 4.45 p. m. after arrival of C. P. R. express from St. John, Vancouver, etc., due at Campbellton at 8.15 p. m.

GOING EAST.

Express train leaves St. Leonard's daily (except Sunday), at 4.45 p. m. after arrival of C. P. R. express from St. John, Vancouver, etc., due at Campbellton at 8.15 p. m.

STEAMSHIPS.

ALAN LINE

ROYAL MAIL STEAMSHIPS

MONTREAL TO LIVERPOOL
Royal Mail Service
Virginian . . . Thurs, June 19
Tunisian . . . Friday, June 27
Victorian . . . Thurs, July 3
Corican . . . Friday, July 11
MONTREAL TO GLASGOW.
Royal Mail Service.
Hesperian . . . Sat, June 21
Pretorian . . . Saturday, June 28
Grahamian . . . Sat, July 5
Scandinavian . . . Sat, July 13

MONTREAL-HAVRE-LONDON.

Scotian . . . Sun, June 22
Corinthian . . . Sunday, June 29
Stellian . . . Sun, July 6
Ionian . . . Sun, July 13
For rates and full particulars, apply
WM. THOMSON & CO., City, or
H. & A. ALLAN, General Agents,
2 St. Peter Street, Montreal.

SAILINGS EUROPE

Every TUESDAY from MONTREAL and QUEBEC
"TITANIC" . . . Mar 6, June 3
"LABRETIC" . . . May 13, June 10
"CANARD" . . . Mar 25, June 17
"HEARTIC" . . . May 27, June 24
Winter Service
Sailings every Saturday from Portland, Me.
VACATION TOUR
All Expenses included
\$167.50
JULY 12 to AUGUST 7
WHITE STAR DOMINION LINE

Local Agents: W. H. C. MacKay, Wm. Thomson & Co., Ltd., The Robert Reid Co., Limited.

CANADIAN PACIFIC EMPRESSES

ST. LAWRENCE ROUTE LIVERPOOL SERVICE.

FROM QUEBEC
Empress of Ireland June 26
Empress of France July 10
ONE CLASS CABIN
FROM MONTREAL
Lake Manitoba . . . July 4
For Rates, Reservations, Plans, Literature, Tickets, etc., apply to
W. B. HOWARD, General Agent, St. John, N. B.

ALL THE WAY BY WATER

Eastern Steamship Corporation

International Line

FARES.
St. John to Portland, . . . \$5.50
St. John to Boston, . . . \$10.00
Leave St. John (Red's Pt. Wharf) at 9 A. M.

MONDAYS

WEDNESDAYS AND FRIDAYS

For BOSTON

via Eastport, Lubec and Portland, RETURNING.

Leave Central Wharf, Boston, same days at 9 a. m. and Portland, 5 p. m. for Lubec, Eastport and St. John.

City Ticket Office, 47 King St. L. R. THOMPSON, A. E. FLEMING, T. F. & P. A.

Crystal Stream S. S. Co.

FREDERICTON ROUTE.

Steamer D. J. will leave St. John North, every Monday, Wednesday and Friday mornings at 8.30 for Fredericton, calling at Sand Point, Westfield, Woodman's Point, Nat. Belyea's, Public Landing, Bedford, Brown's Place, Williams', The Cedars and all regular landings above, returning alternate days, leaving Fredericton at 7.30 a. m. Dinner 50 cents. Good stateroom accommodation on board.

WASHADEMOAK ROUTE.

Steamer Majestic will leave St. John North, every Tuesday, Thursday and Saturday at 10 a. m. for Cole's Island making all landings. Returning alternate days, leaving Cole's Island at 6 a. m. Return tickets good on either boat.

THE MARITIME STEAMSHIP CO. (Limited).

Until further notice the S. S. Canora Bros. will run as follows:
Leave St. John, N. B. Thorne Wharf and Warehouse Co. on Saturday, 7.30 a. m. for St. Andrews, calling at Dipper Harbor, Beaver Harbor, Black's Harbor, Back Bay, a. Letete, Deer Island, Red Store, St. George. Returning, leave St. Andrews Tuesday for St. John, calling at Letete or Back Bay, Black's Harbor, Beaver Harbor, and Dipper Harbor. Tide and weather permitting.