

UPS AND DOWNS.

METEOROLOGICAL OBSERVATIONS—Taken at Barnardo, Man.

sure, so well known and respected, in all her vast dominions, a rising, or even a riot, is a rarity, a lynching unknown, and a verdict of 'served him right' impossible. And no matter to what remote part of the earth one of her people may stray, should injustice be done him, he has only to ask the protection of his flag—always hovering near—and, if wronged, he will be righted, no matter what the cause, the cost, or the consequence.

"In closing, allow me to assert that there is not an American, certainly not a New Englander, of the great and grand old stock worthy of the name, who is not, and justly so, proud of his English origin and of the ancestry from whom he has derived his brightest gifts and best qualities, the noblest language spoken and the highest forms of law, 'his high intellectual belief,' his love of liberty, his independence, his coolness, his courage, his thrift, industry, ingenuity and cleanliness; no other race has yet produced so many excellent traits of character, and, allow me to suggest, while England is—far and away—our greatest, our best and fairest customer, and English immigrants make good, law-abiding citizens, it is not the province and it should not be the policy, of a leading newspaper to continually meet either with cowardly sneer or vulgar insult. Have the manhood to give this simple protest publicity, and, if you cannot be generous, be just."

* * *

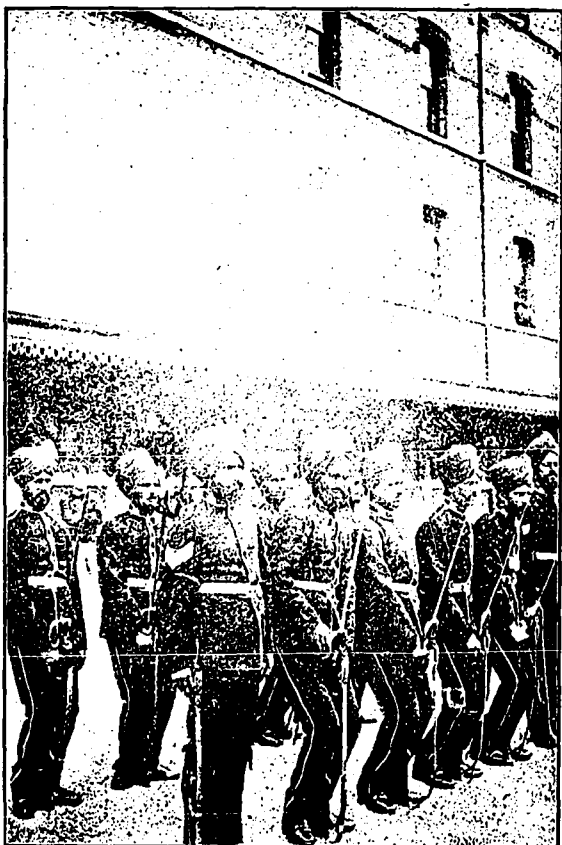
BOYS FOR FARM HELP.

The managers of Dr. Barnardo's Homes invite applications from farmers throughout the country for the boys whom they are sending out periodically from the English homes.

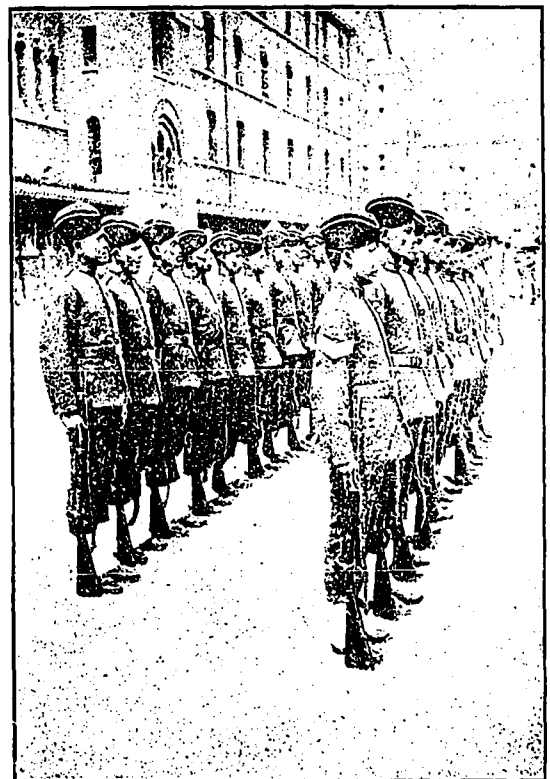
Mr. ALFRED B. OWEN, Agent,
Dr. Barnardo's Home,
214 FARLEY AVENUE, TORONTO.

Date.	Temperature.		Weather and Miscellaneous Phenomena at Observatory.			Wind.					
	Maximum.	Minimum.				Direction.			Velocity.		
						7 A.M.	2 P.M.	9 P.M.	7 A.M.	2 P.M.	9 P.M.
May.....3.....	73	41	Hazy	Cloudy	Hazy	Calm	N.W.	S.W.	0	3	1
4.....	72	42	"	"	Misty	S.E.	S.W.	2	1	6	
5.....	89	28	Overcast	Blue	Blue	N.E.	N.E.	4	5	2	
6.....	53	29	Blue	Blue	Blue	S.E.	S.E.	3	5	5	
7.....	72	39	Cloudy	Cloudy	Cloudy	S.E.	N.W.	1	2	1	
8.....	71	44	"	Overcast	"	N.W.	"	3	4	3	
9.....	67	35	"	Cloudy	Blue	"	"	3	6	1	
10.....	60	30	Blue	"	Cloudy	"	"	2	2	4	
11.....	55	30	Cloudy	"	Blue	"	"	2	1	3	
12.....	54	28	"	"	Blue	"	"	2	4	2	
13.....	49	25	"	"	Overcast	"	N.W.	2	3	2	
14.....	50	21	Blue	"	Blue	S.W.	S.E.	1	5	1	
15.....	59	36	"	"	Cloudy	S.W.	S.E.	1	4	1	
16.....	74	38	Hazy	Hazy	Hazy	N.W.	S.W.	1	1	2	
17.....	83	38	Overcast	Overcast	Cloudy	E.	N.E.	5	5	5	
18.....	66	41	Cloudy	Cloudy	Cloudy	S.E.	"	3	3	3	
19.....	59	37	Overcast	Threatening	Overcast	"	"	2	4	2	
20.....	60	30	Cloudy	Cloudy	Blue	N.E.	E.	1	1	1	
21.....	60	35	Hazy	Blue	Overcast	S.E.	S.E.	3	5	5	
22.....	70	30	Blue	Blue	Hazy	N.W.	N.W.	4	5	2	
23.....	55	28	Cloudy	Cloudy	Blue	"	N.W.	5	3	1	
24.....	56	25	"	"	Cloudy	S.E.	S.E.	1	2	1	
25.....	61	32	"	Overcast	Cloudy	"	"	4	4	3	
26.....	69	35	Cloudy	Cloudy	Misty	"	N.W.	2	3	1	
27.....	70	39	Blue	Blue	Blue	N.	N.E.	2	4	1	
28.....	67	43	Cloudy	Cloudy	Misty	S.	N.W.	2	7	2	
29.....	79	32	Blue	"	Threatening	"	N.E.	3	5	4	
30.....	79	32	Cloudy	Blue	Blue	N.E.	N.E.	3	3	2	
31.....	54	25	Blue	Cloudy	Cloudy	S.E.	S.E.	2	4	2	
June.....1.....	59	24	Cloudy	Overcast	"	"	"	2	4	1	
2.....	58	38	Overcast	Cloudy	Blue	N.	N.E.	1	1	1	
3.....	64	39	Misty	Cloudy	Cloudy	N.E.	N.W.	1	1	1	
4.....	70	35	Overcast	Cloudy	Blue	E.	Calm	1	0	1	
5.....	41	29	Blue	Blue	"	N.W.	N.	3	3	1	
6.....	52	29	Overcast	Cloudy	"	N.E.	N.	3	3	1	
7.....	52	25	"	"	Cloudy	S.	N.W.	3	2	1	
8.....	59	30	Blue	"	Overcast	N.E.	S.	2	2	1	
9.....	70	30	Cloudy	Overcast	Cloudy	"	"	1	3	1	
10.....	65	40	"	Cloudy	Blue	S.W.	N.W.	4	1	4	
11.....	65	36	Blue	Overcast	Cloudy	S.	N.	1	3	1	
12.....	80	51	"	Cloudy	Blue	N.W.	N.W.	3	1	1	
13.....	81	51	Cloudy	"	"	S.W.	N.E.	3	4	5	
14.....	80	42	Threatening	"	Threatening	N.E.	E.	3	6	6	
15.....	88	61	Cloudy	"	"	E.	S.E.	6	7	5	
16.....	82	63	Threatening	Threatening	"	S.E.	S.E.	6	5	4	
17.....	74	52	Overcast	Cloudy	Blue	"	"	2	5	3	
18.....	77	54	Cloudy	"	Cloudy	E.	E.	2	3	2	
19.....	72	49	"	"	Misty	"	"	2	3	2	
20.....	72	37	Overcast	Blue	Cloudy	S.	S.W.	1	3	2	
21.....	77	49	Cloudy	Cloudy	Cloudy	"	N.W.	1	1	2	
22.....	79	37	Blue	Threatening	Cloudy	N.W.	S.W.	1	3	2	
23.....	70	40	Cloudy	Cloudy	Threatening	"	N.W.	2	3	2	
24.....	60	35	Overcast	Threatening	Cloudy	"	N.W.	2	3	1	
25.....	56	41	Cloudy	"	Blue	"	S.W.	5	3	1	
26.....	70	35	"	"	Cloudy	S.E.	S.	2	2	2	
27.....	74	36	Overcast	"	Overcast	"	S.E.	2	3	3	
28.....	62	53	"	Overcast	Cloudy	"	E.	1	2	1	
29.....	69	49	"	Cloudy	"	N.E.	N.E.	1	1	1	
30.....	77	50	Cloudy	"	Blue	S.	S.W.	1	2	1	

(Other Sons of Empire.)



HONG KONG AND STRAITS SETTLEMENTS POLICE.



MALAY ARMED POLICE.