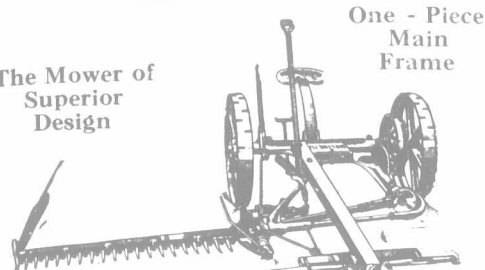


JOHN DEERE FARM IMPLEMENTS

JOHN DEERE-DAIN VERTICAL LIFT MOWER

The Mower of Superior Design



Compensating Gears—that remove strain from the bearings and transmit instead of consume power.

Long Pitman Shaft—that has all end thrust removed, hence has no need of thrust bearings.

Alignment of Cutter Bar—seldom necessary, but easily, quickly and positively made.

Centering The Knives—so that they always register perfectly in the guards, insuring perfect work.

One - Piece Main Frame

Vertical Lift—a lift so easy to operate that an ordinary boy handles it readily.

An Easy Foot Lift—so easy it's surprising, especially after using other kinds.

Adjustable Draft Hitch—instantly set to remove side draft in the most severe conditions of work.

Material and Workmanship—of the known John Deere-Dain standard proven by service, reliable and trustworthy.

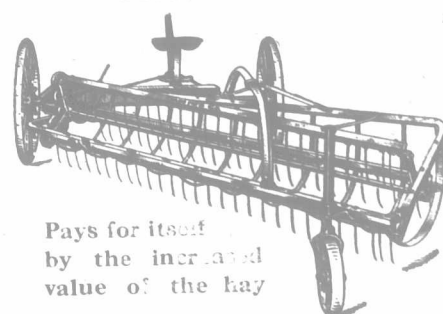
Famous for Quality and Service

There is satisfaction in using high-grade implements. John Deere implements are noted for their lasting qualities and for doing high-grade work.

They are the result of years of experience in manufacturing farm implements.

When you get a John Deere you are assured of high-grade material, workmanship and efficiency in the field.

JOHN DEERE-DAIN SIDE DELIVERY RAKE



Pays for itself by the increased value of the hay

A great labor saver. By its use hay is cured quicker and gotten out of the rain. Works around the field the same as the mower, delivering two swaths of grass upside down in a loose, continuous windrow where it will be exposed to the warm atmosphere. Hay cures evenly and without loss of quality or color.

WELL BUILT.

Special design of frame—

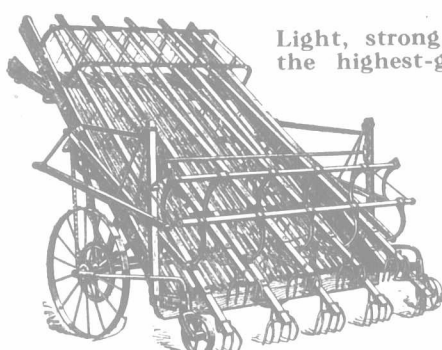
handles greater amount of hay than imitation machines.

Teeth can be raised or lowered and set forward or back.

An easy-running, durable machine that will earn its cost many times over by making hay quicker and better than can be made in any other manner.

Write for special descriptive literature on this machine.

JOHN DEERE-DAIN HAY LOADER



Light, strong, and does the highest-grade work.

Wheels mounted underneath machine. Works close to fences or ditches

Easiest running and most popular loader of the rake bar type.

Mounted entirely on wheels—rear wheels caster—no dragging around corners.

Working parts hammock mounted—swing freely back and forth like a pendulum.

Strokes of rake overlap—practically raking the ground over twice.

Hay is gathered from the swath full width of the machine.

Rakes are malleable—have a spring trip—spring back and avoid breakage when striking obstructions.

Elevator adjusts itself automatically to light and heavy hay.

Automatic-adjustable throat opening prevents choking.

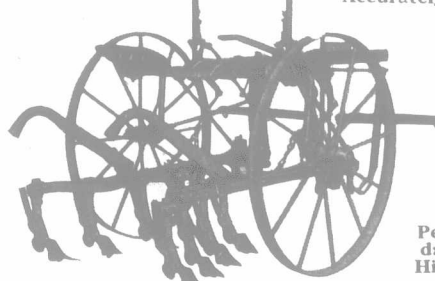
No twisted or crossed chains, cog gears or long, crooked crank shafts.

There are many other superior features on this loader that we will be glad to tell you about, if you will write us.

JOHN DEERE "J-112" SEAT SHIFT CULTIVATOR

Rider Or Walker Automatic Seat Shift.

Horse - Lift Cultivates Accurately

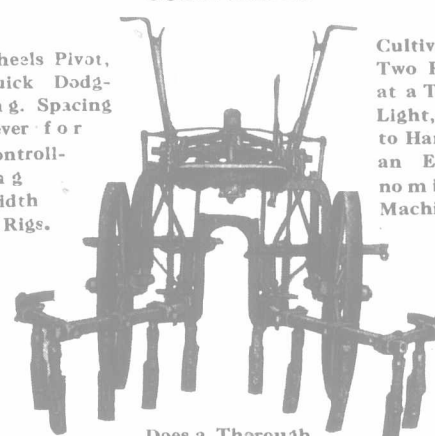


Rigid, Adjustable Couplings, Convenient, Comfortable Dropseat. Write for fuller Description.

JOHN DEERE "KA" TWO ROW CULTIVATOR

Wheels Pivot, Quick Dodging, Spacing Lever for Controlling Width of Rigs.

Cultivates Two Rows at a Time. Light, easy to Handle, an Economical Machine



Does a Thorough Job

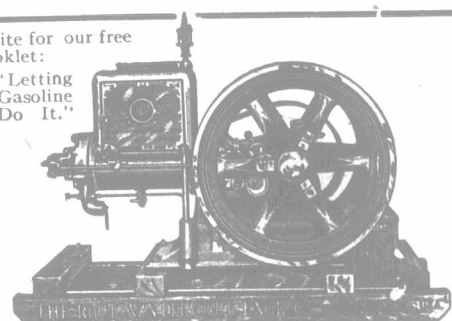
Outside shovels are outside wheels

"R & V. TRIUMPH" ENGINES

The engines that are safe around the house or buildings. Gasoline tank cast solid in sub-base. No danger of exploding.

Write for our free booklet:

"Letting Gasoline Do It."



THE ENGINES THAT MAKE HARD WORK EASIER

R & V Engines are good ones.

They are sold by the John Deere dealer doing business in your home town.

They are made with detachable cylinders in an expensive and superior design.

Main bearings are made of die-cast babbit. Replacement, if ever necessary, is very easy.

Triumph Engines are all fitted with fly-ball governors.

They give close and smooth speed regulation.

Oiling of piston is always sure—tube from oil passes close to hot water in hopper. Oil will not thicken even in coldest weather.

All fittings on R & V engines are of the highest grade.

Before you buy any kind of engine it will pay you to investigate the Triumph.

We'll be pleased to send you further information, FREE

JOHN DEERE PLOW CO. of Welland, Limited
TORONTO, ONTARIO

See your John Deere dealer about these machines

Scientific Farming

You use improved methods to-day to put in your crops; to cultivate them; to harvest them. How about them after they are in the barn? Are they safe? There was a day when perhaps you thought Lightning Rods were no good.

That day is past. It is a fact established beyond any doubt, "That Lightning Rods properly installed are almost absolute protection."

Our rods are the good kind. You are welcome to Catalogue for the asking. Write us soon.

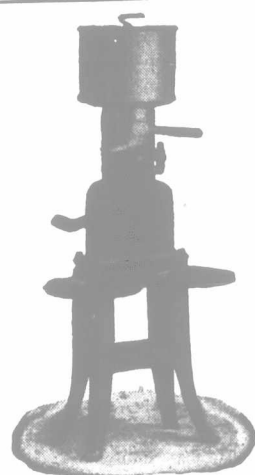
The Universal Lightning Rod Co.
The LOCK JOINT Rod
HESPELER, ONTARIO

WE WILL GLADLY GIVE INFORMATION REGARDING THE USE OF

Lime

on your soil. The soil must be sweet to produce good crops. Where sorrel, horse tail, moss, etc., appear, the soil is sour, and you cannot expect the maximum yield of hay, cereal or fruit without correcting this acid condition. Lime Carbonate (Caedonia Marl) will do this. In many instances it has more than doubled the yield. We furnish blue litmus paper free with directions for testing your soil. Write us for further information. Agents wanted.

INTERNATIONAL AGRICULTURAL CORPORATION
Caedonia Marl Branch
827 Marine Bank Building, Buffalo, N.Y.



\$15 and Upwards

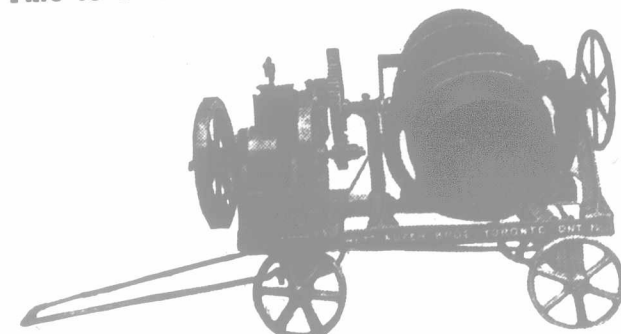
Whether you have but one cow, or if you have fifty cows, we have a high-grade Cream Separator, suitable for your requirements, at a price you can afford to pay.

We send you a machine, on FREE TRIAL, anywhere in Ontario or Eastern Canada, and prepay the freight. Thoroughly guaranteed. LOW PRICES. EASY PAYMENTS. You take no risk whatever, for you settle for it only if satisfied.

Send for Circular "A" to-day, giving particulars of our Free Trial Offer, prices, etc. Agents wanted.

NATIONAL MACHINE CO., Brighton, Ont.
DOMO SEPARATOR, St. Hyacinthe, Que.

This is THE FAMOUS LITTLE WETTLAUER POWER MIXER



The Wetttlauffer Concrete Mixer is especially adapted for all Farm Concrete Work—Brick, Block, Barn Floors, Foundations and Silo building. The Wetttlauffer Concrete Mixer mixes quickly and thoroughly, and Government test has proven that it makes a concrete that is absolutely impossible to make by hand. This Mixer will save you money on your own Cement work and You Can Earn Money by doing work for your neighbors.

Send for catalogue to Farm Dept. W. 3.

We specialize in the manufacture of all kinds of Concrete Machinery.
WETTLAUER BROS., 178 Spadina Ave., TORONTO, ONTARIO