


FIRST AND PARAMOUNT  
ABSOLUTE SECURITY TO POLICYHOLDERS



**"If I should die today my family would have plenty," you say.**

If you die today, yes, but what about years hence? There are many men who were very well-to-do two or three years ago who are in straightened circumstances today. If one of these men were to die the only ready money his family would have would be the proceeds of his life insurance.

An Imperial Life Policy is "as safe as the Bank of England"—it never depreciates in value—and your heirs will not even need a lawyer to help them collect the money.

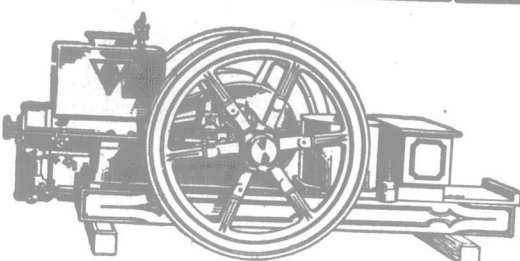
We have a little booklet, "The Creation of an Estate." It makes interesting reading. We'll send you a copy if you write for it.

**THE IMPERIAL LIFE**  
Assurance Company of Canada  
HEAD OFFICE . . . TORONTO

Branches and Agents in all important centres

Copyright

**No tinkering worry or bother with the Alpha. It plugs right along like a steady and well broken horse**



Anybody can run an Alpha Gas Engine. Your wife can run it, your boy can run it, the hired man can run it.

There is nothing mysterious or complicated about an Alpha. That's why it's an ideal engine for farm use.

Not only does the Alpha work well, but it wears well, because it is made from the very best material.

Eleven sizes, 2 to 28 horse-power. Each furnished in stationary, semi-portable, or portable style, and with either hopper or tank-cooled cylinder.

and its workmanship and design are high grade in every particular. Just give it a supply of gasoline or kerosene, oil it up and give it a pull and it saws your wood, cuts your fodder, grinds your corn, pumps your water, runs your cream separator or your washing machine, or does anything else that you want it to do. It's certainly a great labor saver on the farm.

**DE LAVAL DAIRY SUPPLY CO., Ltd.**

LARGEST MANUFACTURERS OF DAIRY SUPPLIES IN CANADA.  
Sole distributors in Canada of the famous De Laval Cream Separators and Alpha Gas Engines. Manufacturers of Ideal Green Feed Silos. Catalogues of any of our lines mailed upon request.

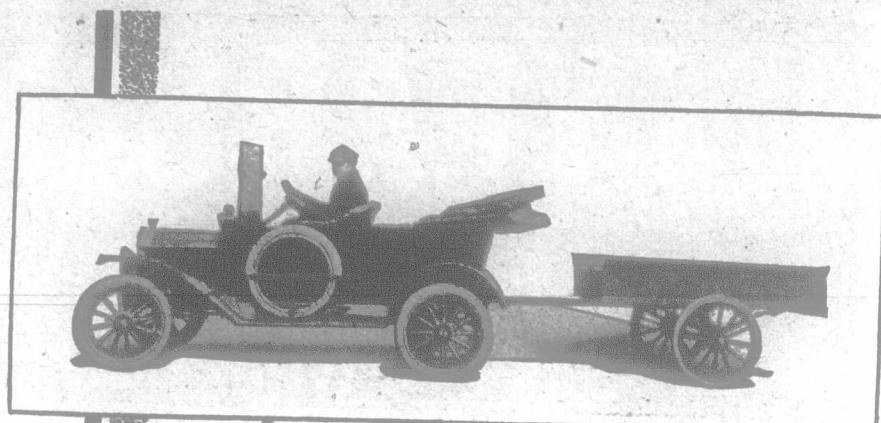
MONTREAL PETERBORO WINNIPEG VANCOUVER  
50,000 BRANCHES AND LOCAL AGENCIES THE WORLD OVER

**FREE LAND FOR THE SETTLER IN Northern Ontario**

Millions of acres of virgin soil, obtainable, free at a nominal cost, are calling for cultivation. Thousands of farmers have responded to the call of this fertile country and are being made comfortable and rich. Here, right at the door of Old Ontario, a home awaits you.

For full information as to terms, regulations and settlers' rates, write to:

H.A. MACDONELL, Director of Colonization, HON. G. HOWARD FERGUSON,  
Parliament Buildings, TORONTO, ONT. Minister of Lands, Forests and Mines.



**Keep the Horses At Work in the Fields**

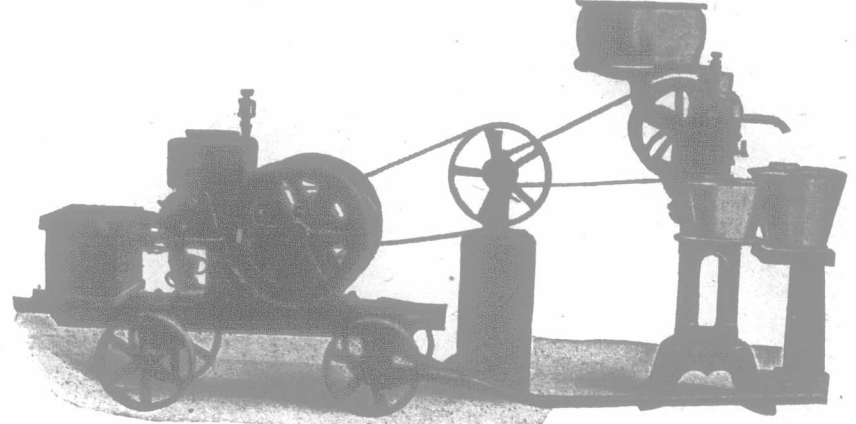
No need to take the horses away from work on the farm—you can do your hauling to and from market, mill or store far quicker, easier, better in every way with a FOX Trailer.



The Fox Auto Trailer is made to attach to any make of automobile. It causes not the slightest injury to the car, and can be driven easily and without any inconvenience. It is built in accordance with the best designs of expert automobile engineers; has steel chassis, direct draught from steel axle, ball-bearing automobile wheels, solid Dunlop tires, guaranteed for 10,000 miles. Size of body, 6 ft. x 4 ft. Write for descriptive catalogue.

Ask Your Local Automobile or Implement Dealer, or write:

**Fox Brothers & Co., Limited**  
WINDSOR, ONTARIO



**SOLVING THE "HIRED HELP PROBLEM"**

This MONARCH 1 1/2 h.-p. Engine attached to our Intermediate Friction Clutch Pulley solves one of the problems for hired help. No counter shaft needed with this attachment. The machine driven is always given its speed automatically, and needs no special attention from the operator. We also make special pulleys to fit separator.

Get our catalogue. It's free for asking. We make all sizes of engines, from 1 1/2 to 35 h.-p. Ensilage Cutters, Grain Grinders, Pump Jacks, Saw Frames, Friction Clutch Pulleys.

**Canadian Engines, Limited**  
DUNNVILLE, ONT. FROST & WOOD  
Smith's Falls, Ont.  
Selling Agents East of Peterboro



**CANADIAN PACIFIC**

NEW TRAIN SERVICE—NOW IN EFFECT  
TORONTO—LONDON—DETROIT—CHICAGO

"THE MICHIGAN SPECIAL"		"THE QUEEN CITY"	
Lv. TORONTO	11.50 p.m. Daily (E.T.)	Lv. LONDON	9.00 a.m. Daily
" GALT	2.16 a.m. " " "	" WOODSTOCK	9.39 a.m. " "
" WOODSTOCK	3.30 a.m. " " "	" GALT	10.29 a.m. " "
" LONDON	4.43 a.m. " " "	" GUELPH JCT	10.57 a.m. " "
" CHATHAM	7.00 a.m. " " "	Ar. TORONTO	12.15 p.m. " "
Ar. WINDSOR (MCR)	8.30 a.m. " " "	<b>LONDON PASSENGER</b>	
" WINDSOR (CPR)	8.50 a.m. " " "	Lv. DETROIT (Fort St.)	7.00 p.m. Daily
" DETROIT (Fort St)	9.30 a.m. " " "	" WINDSOR (CPR)	7.40 p.m. " "
" DETROIT (MCR)	8.10 a.m. " (C.T.)	" TILBURY	8.34 p.m. " "
Lv. DETROIT	8.25 a.m. " " "	" CHATHAM	9.08 p.m. " "
Ar. CHICAGO (MCR)	3.30 p.m. " " "	Ar. LONDON	10.50 p.m. " "

Through electric-lighted standard sleeping cars Toronto-Detroit, and Toronto-Chicago

Particulars from any Canadian Pacific Ticket Agent, or from W. B. Howard, D.P.A., Toronto