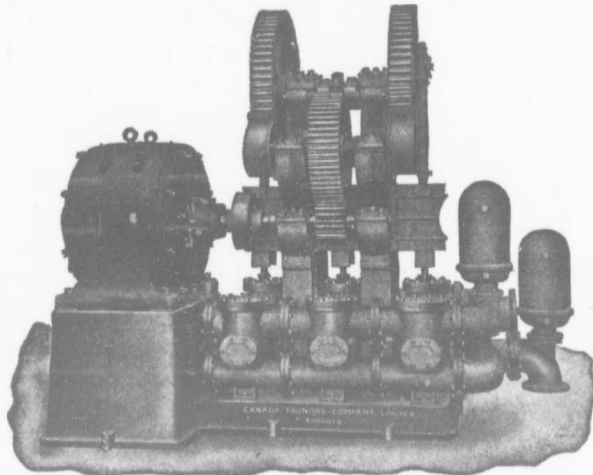


# WATERWORKS PUMPS

Motor  
Driven



Steam  
Driven

Large Capacity and High Pressure

## Waterworks Supplies

Cast Iron Pipe, Valves, Hydrants, Fountains,  
Water Towers, Stand Pipes, Boilers, Etc.

## CANADA FOUNDRY COMPANY LIMITED

Head Office and Works: TORONTO, ONT.

District Offices: MONTREAL HALIFAX OTTAWA WINNIPEG CALGARY VANCOUVER ROSSLAND

THOS. J. DRUMMOND,  
President

JAMES T. McCALL,  
Secretary-Treasurer

C. ED. GUDEWILL,  
Vice-President

## Montreal Pipe Foundry Co., Limited

Special  
Castings  
Flange Pipe  
Branches  
Hydrants  
Valves



### CAST IRON PIPE

Valve Boxes  
and  
general  
Water  
Works  
Supplies

Works at: { LACHINE, QUE.  
THREE RIVERS, QUE.  
LONDONDERRY, N. S.

Combined daily capacity:  
175 Tons Pipes and Castings.

HEAD OFFICE CANADA LIFE BUILDING,

MONTREAL

JAMES THOMSON, President. J. G. ALLAN, Vice-President. JAMES. A. THOMSON, Secretary. ALEX. L. GARTSHORE, Treasurer.

## THE CARTSHORE-THOMSON PIPE & FOUNDRY CO. LIMITED.

Manufacturers of

Flexible and Flange Pipe,  
Special Castings and all kinds of  
Waterworks Supplies



### CAST IRON PIPE

3 inches to 60 inches diameter.

For Water, Gas, Culvert and Sewer

HAMILTON, ONT.