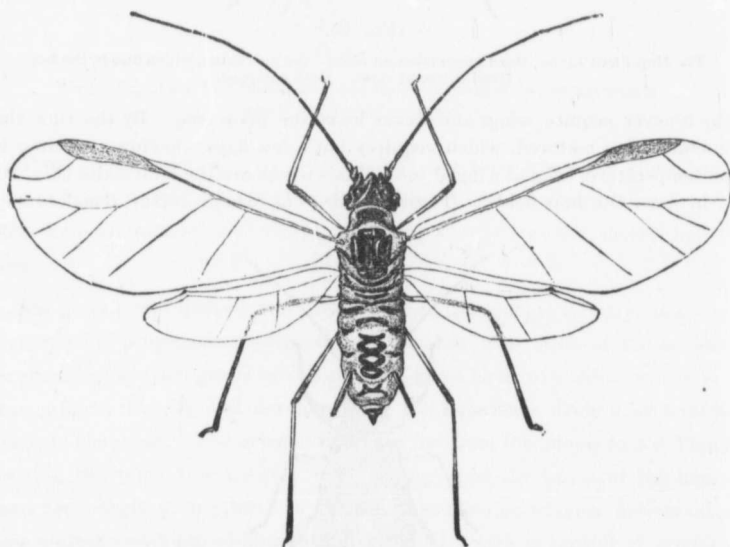


# REMEDIES.

From the life history just given, three important facts are obtained : (1) It will pay to make a preventive application of some of the mixtures mentioned further on, with apparatus before described, to all plum trees in the neighborhood of hop yards, either in the spring, before the appearance of the first winged generation and its consequent migration to hop, or in the fall after hop picking and after the lice have once more returned to the plum, and are making their preparations for the laying of winter eggs. The latter time will, perhaps, be preferable, for the reason that in the fall the plum trees will be less susceptible to the action of the washes, and a stronger solution can be applied without danger to the trees. (2) All wild plum trees in the woods through a hop-growing country should be destroyed. (3) The hop vines should be either burned or thoroughly drenched with kerosene emulsion as soon after the crop is harvested as possible, with a view of killing the males, and thus preventing the impregnation of the females. (4) If the above



(FIG. D).

The Hop-Plant Louse, male—enlarged.

measures have been neglected and the lice have attacked the vines, the crop can still be protected by spraying with insecticide mixtures, which, if thoroughly applied, will prove effective, and there will be no danger of reinfestation from neighboring untreated yards, since during the summer the lice cannot migrate except by crawling from one yard to another.

## SUBSTANCES TO BE USED.

Of all the different substances experimented with in 1888, none gave more satisfaction than properly prepared kerosene emulsions and fish oil soaps.

Cheese  
Water  
Soap

Dissolve  
Churn the mixture  
minutes. Then  
and should add  
the emulsion  
which is good  
cents per gallon  
pound. This  
and diluted  
make thirty  
gallons would

Fish  
Crystalline  
Fish-oil  
Soft

A strong solution  
of water will  
kill the lice  
the suds will

The Board  
used with great  
follows :

The quassia  
chips, for one  
This solution is

## TOMATO

This disease  
of the state, to  
cultivating the  
state, as tomato  
disease makes it  
growth during  
of the top of the  
toward the roots