

# Students' union budget

from page six

<b>Expenditure:</b>	
Ticket Commission .....	\$ 150
Salaries and Honoraria .....	1,075
Script Royalties .....	1,710
Auditorium Rental .....	1,510
Orchestra .....	2,800
Stage Hands .....	900
Production Expenses .....	1,350
Printing and Advertising .....	1,200
Programs .....	400
Office expenses .....	100
	<hr/>
	\$ 11,195
<b>Net Credit:</b> .....	<b>\$ 2,005</b>

<b>WAUNEITA SOCIETY</b>	
<b>Revenue:</b>	
Formal Ticket Sales .....	\$ 2,500
Big and Little Sister Party .....	450
Pin Sales .....	100
	<hr/>
	\$ 3,050

<b>Expenditure:</b>	
Big and Little Sister Program .....	\$ 75
Wauneita Formal .....	550
Big and Little Sister Party .....	1,050
Freshette Booklet .....	325
Service Projects .....	75
Stationery and Printing .....	200
Advertising .....	100
Change-over, flowers, gifts .....	75
Program and misc. projects .....	400
Pins .....	200
	<hr/>
	\$ 3,050

**Net Expenditure:** ..... -0-

<b>WORLD UNIVERSITY SERVICE</b>	
<b>Revenue:</b>	
Treasure Van Commission .....	\$ 750
Share Campaign .....	2,000
	<hr/>
	\$ 2,750

<b>Expenditure:</b>	
Treasure Van expenses .....	\$ 500
Share campaign expenses .....	200
Share campaign expenses to equal revenue .....	2,000
International Seminar .....	250
National Assembly .....	250
International Student Program .....	350
Spring and Fall Seminar .....	150
Office, publicity, speaker .....	200
Book Drive .....	150
	<hr/>
	\$ 4,050

**Net Expenditure:** ..... \$ 1,300

<b>OPENING COMMITTEE</b>	
<b>Revenue:</b>	
Theatre Admissions .....	\$ 3,775
Recreation fees and donations .....	665
Club and Lounge Admissions .....	225
	<hr/>
	\$ 4,665

<b>Expenditure:</b>	
Theatre entertainment and expenses .....	\$ 3,775
Recreation area expenses .....	1,275
Club and lounge expenses .....	560
General publicity .....	375
Tours expenses .....	800
Fine Arts expenses .....	100
Meetings committee expenses .....	40
Multi-purpose Committee expenses .....	100
Dedication Ceremonies .....	1,900
	<hr/>
	\$ 8,925

**Net Expenditure:** ..... \$ 4,260

<b>CONFERENCES</b>	
<b>Expenditure:</b>	
Travel and registrations for Conferences recommended .....	\$ 2,000
	<hr/>
	\$ 2,000

<b>GRANT FUND</b>	
<b>Expenditure:</b>	
Available for grants by motion of Council .....	\$ 6,000
	<hr/>
	\$ 6,000

**Net Expenditure:** ..... \$ 6,000

<b>ADMINISTRATION</b>	
<b>Revenue:</b>	
Miscellaneous .....	\$ 100
	<hr/>
	\$ 100

<b>Expenditure:</b>	
Salaries and wages .....	\$ 41,450
Payroll expense .....	1,200
Audit, legal .....	1,500
Travel .....	2,000
Hospitality .....	250
Office expenses .....	2,500
Postage, telephone and tele. .....	2,000
Printing, pictures .....	200
Taxi-messenger .....	200
Office equipment and maintenance .....	1,800
	<hr/>
	\$ 53,100

**Net Expenditure:** ..... \$ 53,000

<b>ARTS AND CRAFTS AREAS</b>	
<b>Revenue:</b>	
Sales .....	\$ 2,500
Cost of Materials .....	500
	<hr/>
	2,000
Gross Profit .....	2,000
Registration @ \$1.00/student .....	500
	<hr/>
	\$ 2,500

<b>Expenditure:</b>	
Salaries and wages .....	\$ 9,700
Payroll expense .....	150

Supplies .....	300
Repairs and Maintenance .....	1,200
Records and Equipment .....	600
Office and telephone .....	100
	<hr/>
	\$ 12,050

**Net Expenditure:** ..... \$ 9,550

### BUILDING OPERATION

<b>Revenue:</b>	
Room, office and locker rentals .....	\$ 1,500
Lease income .....	35,000
Set-up fees and wages .....	1,400
	<hr/>
	\$ 37,900

<b>Expenditure:</b>	
Salaries and wages .....	\$ 19,350
Payroll expenses .....	550
Insurance .....	1,000
Office expenses .....	1,000
Postage, telephone and tele. .....	600
Moving expenses .....	1,500
Equipment and maintenance .....	200
Building maintenance .....	5,500
Capital Equipment fund .....	7,650
Debt retirement .....	32,000
	<hr/>
	\$ 69,350

**Net Expenditure:** ..... \$ 31,450

### GAMES AREA

<b>Revenue:</b>	
Sales .....	\$ 500
Cost of Goods (75%) .....	375
	<hr/>
	\$ 125
Bowling .....	14,400
Curling .....	21,200
Billiards .....	14,300
Table Tennis .....	1,650
Rentals .....	1,200
Amusement Devices .....	635
	<hr/>
	\$ 53,510

<b>Expenditure:</b>	
Salaries .....	\$ 22,400
Payroll Expense .....	1,000
Sanding .....	250
Laundry .....	390
Repairs and Maintenance .....	850
Office expenses .....	250
Supplies and Equipment .....	1,500
Rental Equipment .....	500
Telephone .....	120
Utilities and Caretaking .....	4,400
Promotions and Miscellaneous .....	400
Contractual Services .....	750
Debt retirement .....	18,000
	<hr/>
	\$ 50,810

**Net Credit:** ..... (\$ 2,700)

### INFORMATION DESK

<b>Revenue:</b>	
Sales .....	\$ 20,000
Cost of Goods .....	16,000
Gross Profit .....	4,000
Ticket Commissions .....	500
Guest Room Rentals .....	5,400
	<hr/>
	\$ 9,900

<b>Expenditure:</b>	
Salaries .....	\$ 7,000
Payroll costs .....	400
Linen .....	130
Laundry .....	640
Office supplies and forms .....	80
Promotion and misc. .....	250
General Supplies .....	50
Telephone .....	100
	<hr/>
	\$ 8,650

**Net Credit:** ..... (\$ 1,250)

### THEATRE

<b>Revenue:</b>	
Rentals .....	\$ 5,000
Stage Hand fees, etc. .....	5,500
	<hr/>
	\$ 10,500

<b>Expenditure:</b>	
Salaries and wages—Supervisor, stage hands, etc. .....	\$ 12,500
Payroll expense .....	100
Building maintenance .....	1,800
Equipment .....	2,000
Shop Supplies .....	1,000
	<hr/>
	\$ 17,400

**Net Expenditure:** ..... \$ 6,900

### VENDING

<b>Revenue:</b>	
Anticipated commission on vending sales .....	\$ 6,500
	<hr/>
	\$ 6,500

**Net Credit:** ..... (\$ 6,500)

### DEBT RETIREMENT

<b>Revenue:</b>	
Fees .....	\$120,380
From building operating .....	32,000
From Games .....	18,000
	<hr/>
	\$170,380

<b>Expenditure:</b>	
To Government of Alberta .....	\$170,380
	<hr/>
	0

### OPERATING RESERVE

<b>Expenditure:</b>	
Sum provided as hedge against errors in estimating non-fee revenue .....	\$ 5,850
	<hr/>
	\$ 5,850

**Net Expenditure:** ..... \$ 5,850

## ENGINEERING GRADS

Engineering graduates in civil, electrical, mechanical and other engineering fields are invited to consider these employment opportunities with the Public Service of Canada:

- |                               |                    |
|-------------------------------|--------------------|
| National Development Programs | Systems Design     |
| Water Resources Studies       | Telecommunications |
| Design and Construction       | Patent Examination |
| Laboratory Research           | Administration     |
| Maintenance and Operations    | Surveys            |
| Instrument Development        | Trade Promotion    |

A career with the Federal Government, the major employer of professional engineers in Canada, features broad scope for professional development, competitive salaries, technically trained support staff, modern equipment, three weeks' annual vacation and promotion based on merit.

**INTERVIEWS:**  
NOVEMBER 20, 21 and 22

Mr. G. Laatumen will be on campus to discuss engineering careers with you on the above dates. Arrange your appointment through the Placement Office today.

## Representatives of THE International Nickel Company OF CANADA LIMITED

Will visit the University to discuss career opportunities with graduating and post graduate students in

### ENGINEERING

- MINING
- METALLURGICAL
- CHEMICAL
- ELECTRICAL
- MECHANICAL
- CIVIL

### CHEMISTRY

### GEOLOGY

### BUSINESS ADMINISTRATION

Also, interviews for Summer Employment will be held with Geology students in 1st, 2nd, 3rd, 4th and post-graduate years.

**On November 27, 28 and 29**

We invite you to arrange an interview through your Placement Office

## THE International Nickel Company OF CANADA LIMITED

COPPER CLIFF, ONTARIO  
THOMPSON, MANITOBA

## Council shorts

By PETE McCORMICK

Arts students will soon have a faculty council similar to that of other faculties.

Students' council voted unanimously Monday to grant a sum of not more than \$110 to establish an arts council.

Arts rep. David Leadbeater said, it was "not going to be an undergraduate society."

He felt the need was more for "some sort of loose organization" to concern itself with intramural activities, a formal and possibly seminars and forums on the social sciences.

A previous arts undergraduate society dissolved about four years ago.

Leadbeater said members of the council would be neither elected nor appointed.

"We will take everyone who offers his help."

The group would finance itself by organizing programs rather than levying fees, he said.

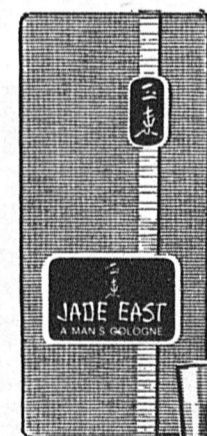
Students' council rejected a request from Varsity Christian Fellowship for \$300 to bring speakers for their Dagwood Suppers.

Glenn Sinclair, co-ordinator of student activities, said, "If we support one religious faction, we'll have to support everyone else."

Phil Ponting, students' union treasurer, indicated that the charge of 50 cents per person was also a factor in the decision. He said it would be a "bad precedent" and "very dangerous" to start subsidizing projects of this kind.

exhilarating  
elegance  
for MEN

# JADE EAST



COLOGNE  
4 oz.  
\$4.75



AFTER  
SHAVE  
4 oz.  
\$3.75

Discerning men find luxurious pleasure in the subtle masculine scent of Jade East... worlds apart from the ordinary.