



# GRAND OPENING



of

PH. 433-8183

1155-87 AVE.

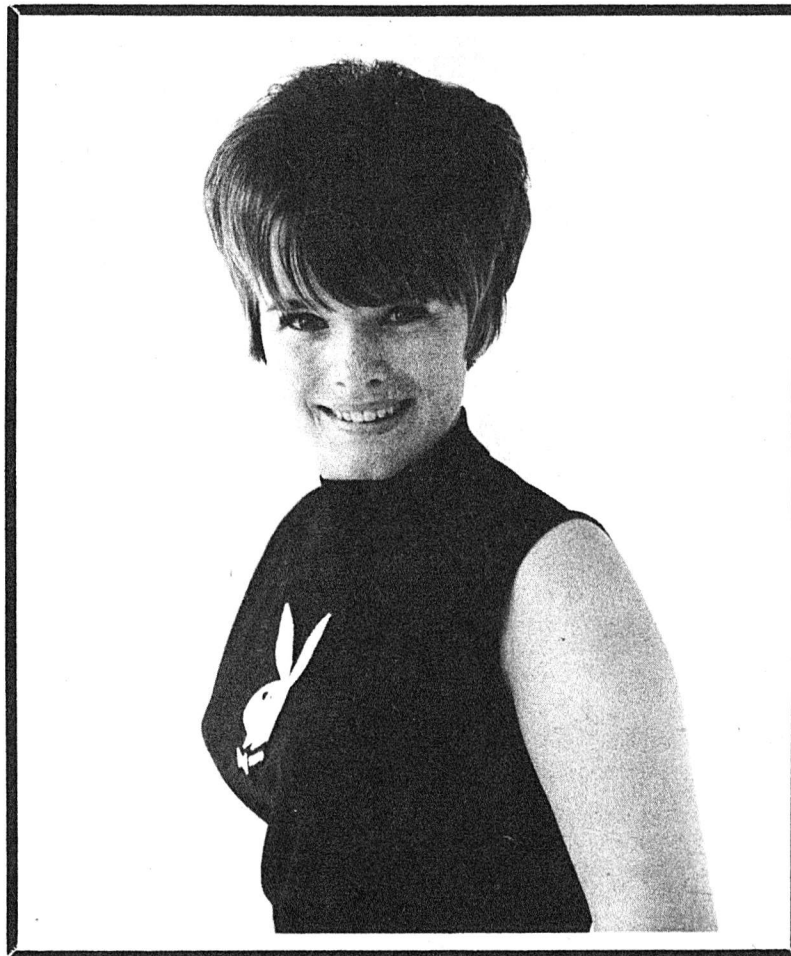
## Campus Squire Clothiers Ltd.

Located in Campus Towers  
Next to Bank of Montreal

Playmate on Campus



October 8



**KELLY BURKE**

Playboy Magazine's June '66 Playmate

Playmate on Campus



October 8

On Saturday, October 8, Miss Kelly Burke will be in our store to meet with you and show you our fashion approved campus clothing.

She will be also be making visits to various campus locations, so be sure and watch for her.

On the afternoon of October 8, Kelly will draw the winners of our Grand Opening "Giveaway".

To be eligible for these awards your name must be in our ballot box no later than 6 p.m. Friday, October 7.

Croydon Topcoat  
Country Squire Suit  
Hartt Shoes  
2 Gant Dress Shirts  
2 Frame Tie & Puff Sets  
2 pair Pantherella Sox  
1 Custom Leather Belt  
1 English Leather Gift Set  
1 Forsyth Tie Clip

Hyde Park Co-ordinate  
2 Forsyth Press Shirts  
2 Frame Tie & Puff Sets  
2 pair Pantherella Sox  
1 Custom Leather Belt  
1 Forsyth Tie Clip  
1 English Leather Gift Set

Jantzen Alpaca Sweater  
Day's Flannel Slax  
Hewetson "Playboy"  
Casual Shoes  
2 Forsyth Sport Shirts  
1 Custom Belt  
1 English Leather Gift Set

**KEITHMOOR SLACKS**

**U of A JACKET**

100 sample vials of English Leather to the first 100 visitors.

As a bonus with any purchase on October 8 you will receive an autographed photo of Kelly.