

**Special for Today**  
**Women's \$1.25 Gloves**  
 85c  
 Women's Two-clasp Glass Lamb Gloves, extra fine quality, with overcast seams and neat self-point stitching on back; white only. Sizes 5 1/2 to 7 1/2. Tuesday, a pair .85

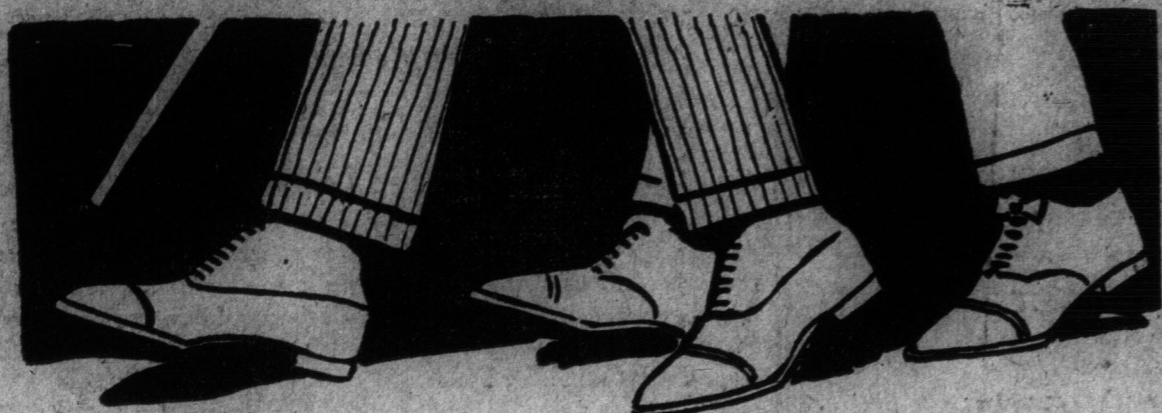
# SIMPSON'S

**Special for Today**  
**Silk Hose at \$1.29**  
 Silk Stockings, of medium weight pure thread silk, with serviceable lace tops, and heel, toe and sole; black and white. All sizes. Remarkable value at, per pair . . . . . 1.29

**Shop Today for These Good Values. Easter Displays Are at Their Best**

### Why Simpson's Special Boots for Men Are Popular

Because style and quality are equally combined, at prices within reach of everybody, and both material and workmanship are the best that can be found in boots at these prices.



**SIMPSON'S SPECIAL MAHOGANY CALF BLUCHER**  
 Beautiful mahogany brown calf Blucher Boots, made with full quarter, narrow semi-round toe style; light-weight, oak-tanned Goodyear welt soles. Sizes 5 1/2 to 10. Per pair . . . . . **5.00**

**SIMPSON'S SPECIAL "RECEDE TOE"**  
 Smart recede toe Lace Boots, made of gunmetal leather, stitched toecap, dull calf top, with blind eyelets; light Goodyear welt sole, low flange heel. Sizes 5 1/2 to 10. Per pair . . . . . **4.75**

**SIMPSON'S OFFICERS' BOOTS**  
 A boot for general outdoor use, made of heavy pliable army leather, Blucher cut, heavy viscolized Goodyear welt sole, heavy shank seams, all sewn with three rows of heavy wax thread; full round toe. Sizes 6 to 11. Today, per pair . . . . . **4.50**

**PATENT BLUCHER BOOT**  
 Smart round toe Patent Blucher Boot, dull calf top, neat perforated toecap, lightweight Goodyear welt sole, military heel. Sizes 6 to 11. Per pair . . . . . **4.50**

**THIS NEW HIGH CUT BOOT \$4.50**  
 High cut Lace Boots, of excellent quality kid leather, with long plain toe, light-weight McKay sewn soles, and high leather Louis heels; a very graceful and perfect fitting boot. Sizes 2 1/2 to 7. Per pair . . . . . **4.50**

**BOYS' TAN KIP BLUCHER BOOTS**  
 A smart boot for spring wear, made of tan kip leather, neat round toe style, Blucher cut, good weight covered channel sole, military heels. Sizes 1 to 5 1/2. Pair . . . . . **2.95**

### Boys' Suit Special for Today at \$5.95

Made of sturdy tweed suitings of smart grey shades, showing herringbone and broken check patterns; coats are single-breasted, with fancy pleats down each side of back and front to sewn-on belt; bloomers have belt loops, durable linings and expanding knee bands. Sizes 25 to 34, for boys 7 to 17 years. This is a splendid opportunity for securing an Easter suit of surprising excellence at an especially low price. **5.95** Today special at . . . . .

### Pinch Back Suits for Easter

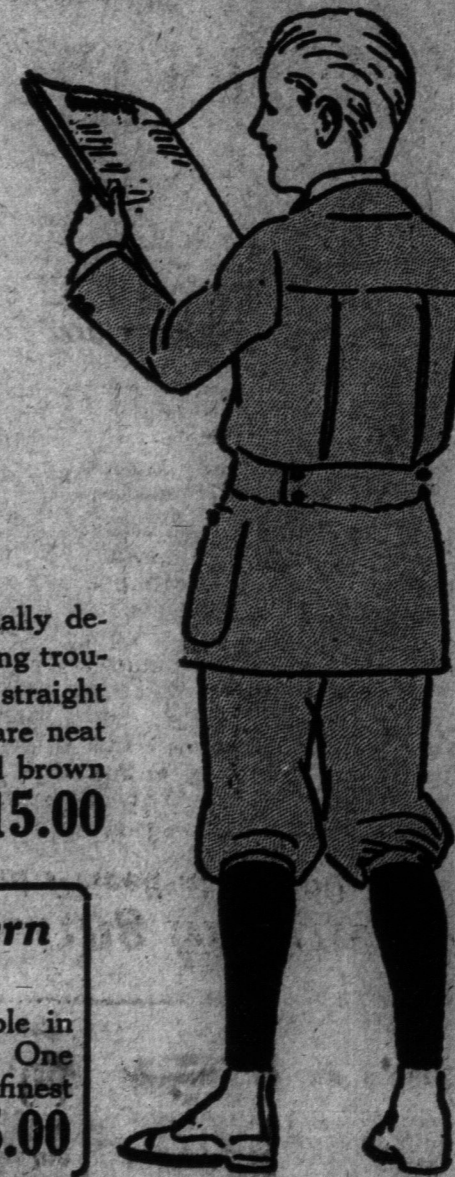
The boyish styles and their general effect of neatness make pinch-back suits a first favorite with the boy; medium grey cassimere-finished tweed makes a particularly smart and seasonable spring suit at **\$11.00**, in sizes 25 to 30; sizes 31 to 34, **\$12.00**.

### Blue Serge Reefers

Blue Serge Reefers continue their undying popularity. They look smart and good until the last bit of wear is got from them; black velvet collars and emblems on the sleeve finish these worthy coats. Sizes 21 to 28, **\$6.50**; sizes 29 to 32, **\$7.50**.

### Boys' Long Pant Suits

The close-fitting sacque with the pinch-back is specially designed for the young man when he first puts on the long trousers. This suit has a smart single-breasted vest, and straight narrow-cut trousers with cuff bottoms. The cloths are neat stripe patterns of brown worsted, also light grey and brown mixed in an indistinct check design. Sizes 33 to 35. Today . . . . . **15.00**



### One of the Finest Michaels-Stern Suits for Young Men

Is made from a choice worsted cloth, bluish purple in color, showing color thread stripes for patterns. One of the very newest single-breasted close styles; finest hand tailoring. Every detail perfect. Sizes 34 to 39, at . . . . . **35.00**

### Furnishings for Men and Boys

**Boys' Cotton Jerseys**, pull over style; white, white and sky, white and navy, navy and red, and various other two color combinations. Sizes 18 to 32. Today special . . . . . **.23**

**Boys' Heavy Cotton Jerseys**, pull over style; made in fine cardigan stitch; grey only. Sizes 26 to 32. Regular 50c. Today **.33**

**Boys' Cashmere Jerseys**, button on shoulder style; in navy, navy and white, navy and red, light blue and brown; close-fitting cuffs and neck band. Sizes 20 to 32. Today special . . . . . **1.75**

**Boys' Merino Underwear**, "Pen-angle" brand, spring weight, made from fine wool and cotton mixture. Sizes 18 to 32. Garment, 50c and 65c.

**Men's High-grade Union Wool Taffeta Pyjamas**, in pink, blue and black hair line and cluster stripes on light grey ground. Military collar and silk frogs. Sizes 34 to 44. Regular \$2.50. Today . . . . . **1.59**

**Men's White Cotton Night Robes**, V-neck style or with collar, made from fine twill materials. Sizes 14 to 20. Regular \$1.25. Today . . . . . **.98**

**SOLDIERS, ATTENTION!**  
**Lightweight Cashmere Jerseys** in navy, pull over style; just the weight to wear under coat in the trenches. Sizes 34 to 40. Today . . . . . **4.95**

### Our Annual Diamond Sale

Splendid values are being shown, more remarkable because of the rapid advance in prices and the scarcity of fine quality diamonds. Our offerings for today are:

**Three-stone Diamond Rings** (as illustrated) of 14k gold, brilliant blue-white gems. Sale price . . . . . **14.95**

Similar ring with larger diamonds. Sale price . . . . . **23.75**

**Onyx Pendant**, with diamond enclosed in circle of onyx. Sale price . . . . . **25.00**

Same with extra diamonds on bar. Price . . . . . **29.50**

**Earrings in Tiffany style**, set in platinum and 14k gold, for pierced or unpierced ears . . . . . **35.00**

**Cluster Earrings**, 14 diamonds, in 14k gold, platinum faced mountings. Sale price . . . . . **59.00**

**Heavy All-platinum Pendant**, fan-shaped drop, encrusted with brilliant blue-white diamonds. Extra value. Sale price **75.00**

**Seven-diamond Cluster Rings** (as illustrated) in 14k gold settings. Special sale price **24.75**

### High-class Wilton and Axminster Rugs of Up-to-date Colorings and Designs Marked at Greatly Reduced Prices for Today

Seamless Wilton Rug, size 9 x 12 feet, very fine close weave with fringed ends. Woven in a handsome all-over tree pattern on light fawn ground work in shades of rose, green and brown colorings. Tuesday, special . . . . . **59.75**

Extra Fine Seamless Wilton, size 8 1/2 x 10 1/2. Splendid quality, woven on extra fine back with ground work in the new mulberry shade, with quaint Chinese border, small all-over pattern and medallion centre, something quite new and up-to-date. Tuesday, special . . . . . **76.50**

Extra Fine Seamless Wilton, size 8 1/2 x 10 1/2. Copy of a real Chinese design of putty colored ground work and figures of blue and terra cotta coloring. Very fine quality and close weave. Tuesday, special . . . . . **56.50**

Oriental Reproduction, size 9 x 10 1/2. A wonderful rug woven as an exact copy of a Persian Sheraz with handsome large design and effective border, in rich shades of blue, brown and cream colorings. Tuesday, special . . . . . **71.75**

Very Fine Wilton Rug, size 9 x 12. Woven in one piece of extra fine quality in two shades of plain colors, in either blue or brown with small Chinese border in rich coloring of gold and orange. Tuesday, special . . . . . **89.50**

Imported Seamless Axminster, size 9 x 12. Extra heavy quality woven in one piece, in a handsome all-over Persian design, in fawn, old rose, brown and green mixtures. A rug that is very effective, and will give splendid wear for sitting-room or dining-room use. Tuesday, special . . . . . **51.00**

### Captivating Millinery

Decidedly French are the inclinations of these hats we are showing today at \$12.50—not a whit less jaunty than M'sle herself is wearing in the French capital. But as they were made by our own expert milliners, the price is the "payable" one of only \$12.50. All the newest braids, and all the newest colors in flowers, feathers and ribbons were commandeered for the operation; and as a venture we have turned out a few leghorn and black lisse with nosegays of garden flowers, which are just as picturesque and fresh looking as springtime herself. A collection from which it will be a pleasure to select your Easter hat. Each . . . . . **12.50**

### Wear-Ever Aluminum

At Special Prices for Today

Covered Saucepans, 2-quart size, 144 to sell Tuesday, at each . . . . . **.98**

Double Boilers, one-quart size, Tuesday \$1.49; two-quart size, Tuesday, \$1.95; three-quart size, Tuesday, \$2.49.

Tea Kettles, 8-quart size, Tuesday \$3.45;

4-quart size, Tuesday \$3.65; 5-quart size, Tuesday, \$3.95; 6 1/2-quart size, Tuesday \$4.25.

**Aluminum Coffee Percolators** of a very superior grade, handsome in design and finish, medium size, quick action pump. To make good coffee requires a coffee percolator, and the Wear-Ever is the kind to make it with. Tuesday's price is less than factory cost 5.95

### The Pure Food Market

Telephone Adelaide 6100

**MEATS SPECIAL**

1,000 lbs. Finest Sirloin Steak, Tuesday special price, per lb. . . . . **.29**

1,000 lbs. Minced Shoulder Beef, Tuesday special price, per lb. . . . . **.19**

Blade Roasts, Prime Beef, per lb. 22c and 23c.

Brisket Boiling Cuts, per lb. . . . . **.20**

H. A. Brand Breakfast Bacon, highest grade, mild, by the piece, per lb. . . . . **.43**

**FISH SPECIAL**

1,000 lbs. Red Sea Salmon, 5 to 8 lbs. each, whole or half fish, special, per lb. . . . . **.16**

Winter-caught Whitefish, per lb. . . . . **.17**

Winter-caught Trout, per lb. . . . . **.20**

Halibut Steaks, per lb. . . . . **.23**

Cod Steaks, per lb. . . . . **.20**

Best Finnan Haddies, per lb. . . . . **.15**

**GROCERIES**

5,000 lbs. Choice California Seedless Raisins, while they last, 2 lbs. . . . . **.25**

4,000 lbs. Finest Canned Peas, not more than six tins to one customer, 5 tins . . . . . **.23**

One car Standard Granulated Sugar, in 20-lb. cotton bags, per bag . . . . . **1.69**

Lake of the Woods Five Roses Flour, 24-lb. bag . . . . . **1.48**

**FRUIT SECTION**

Choice California Sun-kist Navel Oranges, good size, per dozen . . . . . **.53**

Choice Grapefruit, each 10c, dozen . . . . . **1.10**

Yellow Cooking Onions, 2 lbs. . . . . **.27**

The **SIMPSON** Company  
 Robert Simpson Limited

**\$3.75 Bowl for \$2.69**  
 Cut Glass Fruit Bowl, heavy, clear, evenly cut design, pretty floral decoration, full eight-inch size. Special today, each . . . . . **2.69**

**\$3.75 Cut Glass Sugar and Cream Sets**, 75 sets only; heavy, evenly cut designs on excellent quality clear white blanks. Today special, a pair . . . . . **2.69**

### Wall Paper Specials

**Japanese Leathers, 39c Yard.**  
 Hand-tooled designs worked in green, brown and red, with lacquer gold finish. Superb decoration for libraries, halls and billiard rooms; 36 inches wide.

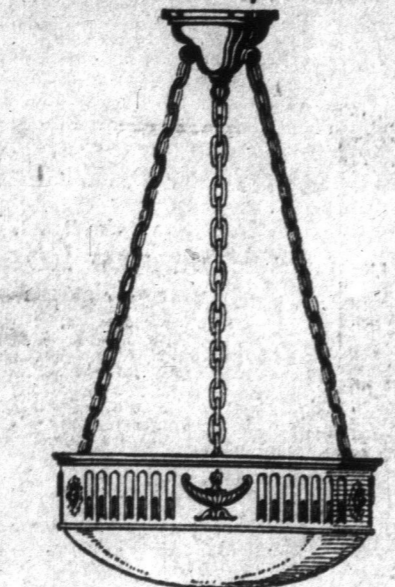
**English Parlor Paper, 29c Roll**  
 Champagne ground, silk finish, bow knot, ribbon pattern, two-tone color effect. Regular 50c. On sale today, a single roll . . . . . **.29**

**American Fabric Weave Papers, 23c Roll**  
 For living-rooms and dining-rooms. Fabric Weave Paper in newest color arrangements of blue, brown and grey, overprinted in colors and embossed with basket weave effect. Regular 40c. Today, a single roll . . . . . **.23**

**Band Borders, 3c Yard**  
 Three-inch Band Borders, to use with fabric weave papers on living-rooms. Regular 8c a yard. Today . . . . . **.3**

**Canadian Wall Papers, Special 10c Roll**  
 Conventional and floral designs for halls, bedrooms and sitting-rooms; extra large selection of styles and colorings. On sale today, a single roll . . . . . **.10**

### Fixture at \$11.30



Handsome Semi-indirect Fixture (as illustrated) giving a faint amber tint when lighted. An unusual value at . . . . . **11.30**

### ATTRACTIVE TABLE LAMPS AT LOW PRICES.

These beautiful lamps were bought some time ago at very low special prices. They have just been received and are marked for quick selling.

Style 1—Made in cast brass, medium high, in white enamel finish or old gold with art glass shade. Special Easter price . . . . . **6.50**

Style 2—Slightly larger, very nicely shaped and designed with a circular art glass shade, in either blue, amber or ruby colors. Special Easter price . . . . . **7.75**

Style 3—Still larger lamp of splendid proportions with two sockets and made of cast brass special Easter value . . . . . **13.50**

### Three Specials in Drapery

**Tapestry Couch Covers, Each \$2.95**  
 A limited quantity only of serviceable Couch Covers, mostly in the Roman stripe tapestry, in bright, attractive colors of red, green and brown. Just for Tuesday, **2.95** each.

**New Bordered Scrims, a Yard 19c**  
 A big lot just received; some have plain centres and effective colored borders, and others come with neat all-over designs, in light and medium colors. Just for Tuesday, a yard . . . . . **.19**

**English Cretonnes a Yard 16c**  
 At this very moderate price there is a fine lot of brightly colored Cretonnes, very suitable for cushions, box coverings, etc. The width is 30 inches. Just for Tuesday, a yard . . . . . **.16**

### The Drug Store

15c package Powdered Alum . . . . . **.11**

25c bottle Proxide Hygien . . . . . **.19**

25c Mentalized Cough Cure . . . . . **.19**

42c Beef, Iron and Wine . . . . . **.37**

25c Parli's Food . . . . . **.21**

60c bottle Emulsioid Liver Oil . . . . . **.59**

52c bottle Natural Color Restorer . . . . . **.38**

20c box Bland's Pills (100 in box) . . . . . **.13**

25c bottle Sulphur and Sarsaparilla . . . . . **.47**

52c Burdock and Molasses . . . . . **.21**

25c bottle Effervescent Magnesia . . . . . **.21**

25c box Apollo Headache Cachets . . . . . **.19**

15c box Bronchial Lozenges . . . . . **.25**

Sanifish, tin . . . . . **.9**

Candy's Fluid . . . . . **.32**

25c bottle Corn Cure . . . . . **.19**

War Tax Included.

**E. SIMPSON DRUGS**

### Towels

#### At a Rush Price

**White Turkish Bath Towels** (having slight imperfections), large size, 23 x 45 inches, hemmed or fringed. Rush price to . . . . . **.25**

**Pure Linen Huckaback Bedroom Towels**, plain white or with red borders, hemmed. Special today, a pair . . . . . **.48**

**White Terry Cloth Bath Towels**, pink, blue, lavender and gold stripes. Extra good quality, heavy close pile. Today, a pair at . . . . . **.98**

**Fine Quality All-Linen Huckaback Guest Towels**, Irish grass bleached, with pretty damask borders. Special today, a pair . . . . . **.55**