

OUR CHESS COLUMN.

Solutions to Problems sent in by Correspondents will be duly acknowledged.

TO CORRESPONDENTS.

J. W. S., Montreal.—Paper received. Thanks. T. S., St. Andrews, Manitoba.—Correct solution received of Problem No. 256. Q., Montreal.—Should the games appear shortly we will endeavour to obtain copies of them. E. H.—Solution received of Problem for Young Players No. 256. Correct. J. & H. McG., Cote des Neiges.—Correct solution received of Problem for Young Players No. 256.

THE AMERICAN CHESS CONGRESS—THE TOURNAMENT.

The American Chess Tournament is exciting much attention in New York, and, no doubt, in all parts of the United States and in Canada there are many who are anxious to learn the particulars connected with a contest which has brought so much chess skill together. We give below the latest news we can obtain, and next week we will not fail to add all that may occur which may be of an interesting nature.

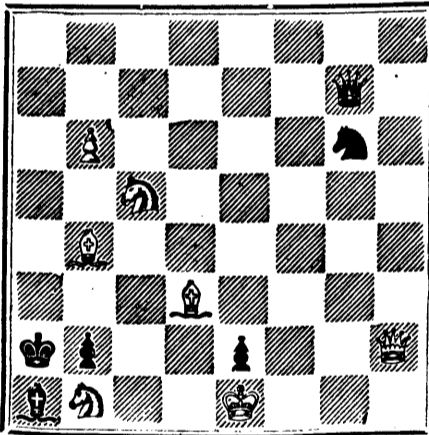
The defeat of Captain Mackenzie by Grundy, the English representative, on Thursday, gave a new interest to the chess tournament yesterday, more especially as their second trial was among the games to be played. In that contest Captain Mackenzie began the game with a Ruy Lopez opening, which is deemed by competent chess-players the most formidable and enduring method of attack. The game was sharply contested for four hours and a half, when Captain Mackenzie was obliged to retire after the forty-sixth move. He had then on the board his queen and three pawns, but his antagonist had a bishop in addition to these four pieces. He had also placed his formidable opponent in such a position that he could not save one of his pawns without exchanging queens, which would leave him practically defenceless, inasmuch as Grundy could readily have queened one of his pawns by pushing it up to the eighth square. When they met for the second trial yesterday there was, therefore, more than usual interest, which the result justified. Every move was made with great deliberation and fore-sight, and after the thirty-eighth there was a complete deadlock. Each player had seven pieces on the board, Mackenzie his king, knight and five pawns, and Grundy his king, bishop and five pawns. No move was left open which could possibly lead to a termination of the game, and the result was, therefore, a draw. This places Grundy in the best position in the tournament so far, as he has also played a draw and win with Judd, of St. Louis, one of the most formidable players engaged. Sellman has, however, half a game more to his credit.

At the close of the second week the tournament stands, with each man to play seven more games:

Table with 4 columns: Players, Won, Lost, Dr'n. Lists names like Judd, Grundy, Mohle, Mackenzie, Sellman and their respective game records.

PROBLEM No. 260.

By Mr. W. A. Shinkman. BLACK.



WHITE White to play and mate in two moves

GAME 390TH.

Played between Master Frank Brown and Herr Zukertort.

The game was one of twelve which the latter played against as many opponents simultaneously and without sight of the board or men. The contest took place at Birmingham, England. The game is chiefly interesting from the fact that the great player's antagonist was only sixteen years of age. The notes are from the Field, but much condensed.

GIUOCO PIANO.

Chess game notation for Game 390th, listing moves for White (Master Frank Brown) and Black (Herr Zukertort) from 1 to 27.

NOTES.

(a) A dangerous move for either player after having castled on the K side, and before the opponent has also

castled on the same wing. We have on several occasions pointed out that it not only loses time, but gives the opponent the opportunity of forming a serious attack by answering P to K R 3, with the object of advancing P to K Kt 4, as done in the present instance.

(b) The counter-attack has been well pursued up to this, and Black has forced an open file for his R with excellent prospects of increasing his advantage. But here it was stronger to have taken with the B, which would have led to lively complications, only to be met by the greatest caution and nicety of play.

(c) Black is taking up the offensive in a vigorous manner.

(d) He could not hope to press for a stronger attack by Q R 5, as it would only have led to a general exchange and a tediously even game.

(e) White is conducting his game uncommonly well, and especially this move is beyond what might be expected of such a youthful antagonist.

(f) This shows remarkable good judgment and foresight. R to R 7 was very tempting, but would have left him with an inferior game.

(h) The game was here given up as drawn, owing to the lateness of the hour. White has still kept his pawn ahead, but he had hardly any fair prospect of winning; not alone on account of his opponent's strength, which is scarcely diminished in his blindfold trials, but also by the nature of the position, more especially as the Bishops of the two parties are of opposing colour.

GAME 391st.

Played in Manitoba recently between a Hall Breed amateur and an English player.

Chess game notation for Game 391st, listing moves for White (Amateur Half-Breed) and Black (English Player) from 1 to 26.

NOTE.

(a) A move which loses the game at once.

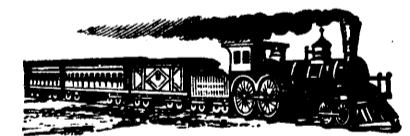
SOLUTIONS

Solution of Problem No. 256.

Solutions for Problem No. 256, listing moves for White and Black.

PROBLEMS FOR YOUNG PLAYERS, No. 257

Solutions for Problems for Young Players No. 257, listing moves for White and Black.



GOVERNMENT RAILWAY.

Western Division.

Q. M. O. AND O. RAILWAY.

SHORTEST AND MOST DIRECT ROUTE TO OTTAWA.

On and after MONDAY, JANUARY, 12th, Trains will leave HOCHELAGA DEPOT as follows:—

Train schedule table showing departure and arrival times for Express Trains for Hull and Aylmer, and Trains for St. Jerome.

MAGNIFICENT PALACE CARS ON ALL PASSENGER TRAINS.

General Office, 13 Place d'Armes Square. STARNES, LEVE & ALDEN, Ticket Agents, Office, 202 St. James and 158 Notre Dame Streets. C. A. SCOTT, Gen'l Superintendent Western Division. C. A. STARK, Gen'l Freight and Passenger Agent



SEALED TENDERS marked "For Mounted Police Supplies," and addressed to the Right Hon. the Minister of the Interior, Ottawa, will be received up to noon on THURSDAY, the TWENTY-SECOND day of JANUARY next, for the following supplies, viz.:

Table listing supplies for Mounted Police, including items like Flannel, Woollen Undershirts, Woollen Drawers, Stockings, Mitts, Blue Artillery Cloth, etc., with quantities and prices.

MATERIAL FOR THE MANUFACTURE OF BOOTS.

Table listing materials for boot manufacture, including Grained Leather, No. 1 Canadian Kip Skins, No. 1 Spanish Sole Leather, No. 1 Slaughter Sole, No. 1 Russel Sheep Skins, etc.

Patterns of all Articles, except Leather, may be seen at the Department. The Flannel, Brown Duck, Leather, Red and Blue Cloth, Red and White Serge, and Yellow Luce and Braid, to be delivered at the Penitentiary, Kingston, within six weeks of acceptance of contract.

The other Articles to be delivered at Ottawa, not later than 1st April. Every article will be subject to examination and rejection if not fully equal to the sample.

Freight charges from places of shipment to Kingston or Ottawa, as the case may be, to be paid by the Contractor.

Any Customs duties payable on the above supplies to be paid by the Contractor. Printed forms of tenders may be had on application to the undersigned.

Samples to accompany tenders. Tenders may be for the whole or any of the above Articles.

The lowest for any tender not necessarily accepted. Payment for these supplies will be made on the 3rd July next.

No payment will be made to newspapers inserting the above advertisement without authority having been first obtained.

J. S. DENNIS, Deputy Minister of the Interior. FRED. WHITE, Chief Clerk. Ottawa, December 22nd, 1879.

SALMON ANGLING.

DEPARTMENT OF MARINE AND FISHERIES, FISHERIES BRANCH, OTTAWA, 31st December, 1879.

WRITTEN OFFERS will be received to 1st April next, for the ANGLING PRIVILEGES of the following rivers:—

Table listing rivers for salmon angling, including River Kegashka (North Shore), Watsheeshoo, Washcehootai, Romaine, Musquarro, Pashasheeboo, etc.

Rent per annum to be stated: payable in advance. Leases to run from one to five years. Lessees to employ guardians at private cost.

By order, W. F. WHITCHER, Commissioner of Fisheries.

20 Lovely Rosebud Chromo Cards or 20 Floral Motto with name 10c. Nassau Card Co., Nassau, N.Y.

50 Chromo, Snowflake, Oriental, Lily, etc. Cards with name, 10c; 25 Filastatrow Cards, 10c; 1 Fern and Scroll Autograph Album, 15c; Agents complete outfit, 1c. ROYAL CARD CO., Northford Ct.

50 Perfumed Chromo and Lace Cards, name in gold in fancy case, 10c. Davids & Co., Northford, Ct.

The Scientific Canadian

MECHANICS' MAGAZINE AND PATENT OFFICE RECORD, A MONTHLY JOURNAL

Devoted to the advancement and diffusion of Practical Science, and the Education of Mechanics.

THE ONLY SCIENTIFIC AND MECHANICAL PAPER PUBLISHED IN THE DOMINION.

PUBLISHED BY THE BURLAND LITHOGRAPHIC CO.

OFFICES OF PUBLICATION: 5 and 7 Bleury Street, Montreal.

G. B. BURLAND, General Manager. F. N. BOXER, ARCHITECT & CIVIL ENGINEER, Editor.

TERMS:

One copy, one year, including postage, \$2.00. One copy, six months, including postage, 1.10. Subscriptions to be paid in ADVANCE.

The following are our advertising rates:—For one monthly insertion, 10 cts. per line; for three months, 9 cts. per line; for six months, 8 cts. per line; for one year, 7 cts. per line; one page of illustration, including one column description, \$30; half-page of illustration, including half column description, \$20; quarter-page of illustration, including quarter column description, \$10. 10 per cent. off on cash payments.

INVENTIONS AND MACHINERY, &c., or other matter of an original, useful, and instructive character, and suitable for subject matter in the columns of the MAGAZINE, and not as an advertisement, will be illustrated at very reduced rates.

REMITTING MONEY.—All remittances of money should be in the form of postal orders. When these are not available, send money by registered letters, checks or drafts, payable to our order. We can only undertake to become responsible for money when sent in either of the above ways.

This journal is the only Scientific and Mechanical Monthly published in Canada, and its value as an advertising medium for all matter connected with our Manufactories, Foundries, and Machine Shops, and particularly to Inventors, is therefore apparent.

60 CHROMO, MOTTO, Gilt-Edge & Lilly cards, with name. 10c. Globe Print. Co., Northford, Ct.

\$77 a Month and expenses guaranteed to Agents. Outfit free. SHAW & CO., AUGUSTA, MAINE.

60 Queen Anne and Photo Cards, illuminated & perfumed in case, 10c. Atlantic Card Co., E Wallingford, Ct.

\$10 to \$1000 Invested in Wall St. Stocks makes fortunes every month. Book sent free explaining everything. Address: BAXTER & CO., Bankers, 7 Wall St., N.Y.

40 ELEGANT CARDS, all Chromo, Motto, and Glass, name in gold and jet 10c. West & Co., Westville, Ct. 13-12-24

THE COOK'S FRIEND BAKING POWDER

Has become a HOUSEHOLD WORD in the land, and is a HOUSEHOLD NECESSITY

in every family where Economy and Health are studied. It is used for raising all kinds of Bread, Rolls, Pancakes, Griddle Cakes, &c., &c., and a small quantity used in Pie Crust, Puddings, or other Pastry, will save half the usual shortening, and make the food more digestible.

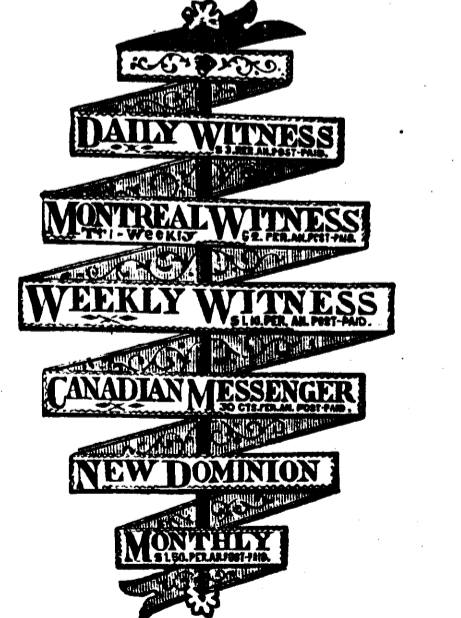
THE COOK'S FRIEND

SAVE TIME, IT SAVES TEMPER, IT SAVES MONEY.

For sale by storekeepers throughout the Dominion, and wholesale by the manufacturer.

W. D. MCLAREN, UNION MILLS, 55 College Street. 17-19-52-362

CHEAPEST AND BEST.



JOHN DOUGALL & SON, 218 and 220, St. James Street, Montreal

Electrotyping and Job Printing, Chromatic and plain

\$55.66 Agents Profit per Week. Will prove it or forfeit \$500. \$4 Outfit free. Montreal Novelty Co., Montreal, P. Q.