

NEWS OF THE PROGRESS IN THE PROVINCES



Provincial Shriners Attending the Grand Ceremonial in Edmonton Last Week.

CITY NOTES.

The report of the city comptroller shows that during 1912 the city spent in all departments, \$8,179,677. The estimates for 1913 amount to \$6,821,000 for public utilities and public works, not including general estimates and school taxes. This large sum includes \$1,085,000 on paving, \$903,000 on sewers, \$510,000 on street railway extensions, \$200,000 on hospitals, and \$100,000 on river improvements. The city has now 29 schools in operation; six more are erecting, and three more will start shortly, making 38 by the end of the present year. The Canadian Pacific Railway advertises that during April it will place seventeen new townships on the market, on the new branch line in Alberta and Saskatchewan. The Canadian Pacific Railway has awarded contracts amounting to about \$3,300,000 for the completion of the Kootenay Central railway into the Columbia Valley. About 80 miles remain yet to be finished. About 2,000 men will be employed, using also six steam shovels. This line (which will be operated by the C.P.R.) will give access to the famous and fertile Columbia Valley. The Merchants Bank have acquired a corner site on the main street, and will erect a four storey building costing in the neighborhood of \$600,000.

During 1912, 955 miles of railway lines were completed in Alberta—583 miles by the C.N.R., 234 by the G.T.P., 93 by the C.P.R., and 23 by the Edmonton, Dunvegan and B.C. Co. More lines were laid with steel than in all the other provinces of the Dominion combined; in addition 491 miles were graded. The total railway mileage is now 3,055.

The city assessor's preliminary statement of the 1913 assessment estimates the latter at \$154,674,428. This is reached by computing buildings at their full value; but for purposes of revenue buildings are assessed at only one-half their value, so that the figure is reduced to \$133,004,196. Last year's assessment, on the same basis, was \$112,000,000. Work is starting shortly on the C.P.R.'s general development program, a contract having been let for the construction of the ditches in the eastern section of the C.P.R. Irrigation block.

MEDICINE HAT, ALTA.

Since January 1st, three concerns have definitely decided to locate here an initial investment of about \$1,200,000. The enormous Ogilvie Milling Co.'s plant is nearing completion, and it is estimated that in the course of about six weeks it will be in operation. Plans are about complete for a second large flour mill, that of the Maple Leaf Company, which promises to be as large or perhaps larger than the Ogilvie Co.'s.

The final steps have been taken for the location of a new industry, which will involve the investment of approximately \$1,000,000, and will afford employment to from 300 to 600 highly skilled men. This industry is for the manufacture of car wheels, underframes, and heavy foundry work, including box cars, flat cars, and probably eventually a nail mill. The associates in the enterprise are Felix Frank, of Prince Albert; D. E. Hanna, vice-president of the C.N.R.; Hon. F. H. Phippen, K.C.; M. C. Grant, Imperial German consul at Halifax; and Hector McInnes. No time is being lost in starting.

Yet another important industry has been located here. This is the Saskatchewan Bridge and Iron Works Company, of Moose Jaw, which has agreed to erect a factory at a cost of not less than \$100,000. This concern is one of the largest of its kind in the west, and, finding expansion imperative, has selected Medicine Hat as its new point. Structural steel and steel girders will be the output, and on account of the large number of new factories now in course of construction, there will be a ready market in the city.

The final completion of the assessment roll for 1913 shows the grand total of the property in the city at \$18,028,295; the public school assessment, which takes in certain outlying land, shows \$20,550,850.

The teachers now attending the convention in Edmonton will receive ten dollars each toward the expenses of their trip; as about 20 went, the school board will expend \$200 on the scheme. Messrs. Wood Grundy Company, of Toronto, have intimated that, considering the state of the market, the best price that can be offered for the issuing of debentures which the school board had made, was 90 per cent. of par. Owing to the necessity of being immediately supplied with cash, the board decided to accept the offer.

The Northwest Drilling Company, which has the contract for sinking the new gas well for the city in Central Park, has reached a depth of 900 feet with the hole, having been at the actual work of drilling about a month. It is anticipated that the Medicine Hat gas sand will be reached when the drills get down in-

to mother earth about 150 feet additional, more or less. Even now there is a distinct odor of natural gas at the mouth of the well.

When completed the well will be used as a reserve till required by the rapidly increasing population of western Canada's manufacturing center and its expanding industrial activities.

LETHBRIDGE, ALTA.

The Lethbridge Creamery, which is being rushed to completion, will be operating within a few weeks. The International Harvester Company is preparing to make Lethbridge its permanent headquarters for all Southern and Central Alberta, and has besides approving plans for a \$125,000 warehouse and office building arranged for the removal of its entire collection staff of 25 men to this city.

The Lethbridge City Council, at the request of the Swift Canadian Company, delegated Mayor Hardie, Alderman Hamilton, and three members of the Industrial Committee to go on to Winnipeg and complete the arrangements for the establishment of a packing plant in this city this spring.

The live stock industry in Southern Alberta has received material encouragement from the action of the Canadian Pacific Railway, which has just brought into operation a new scale of freight rates on cattle from points in Eastern Ontario to points in Southern Alberta. This new scale amounts to practically a 40 per cent. reduction and will encourage the importation of good breed cattle. The first Mixed Farming Convention of Alberta will be held here on April 15 and 16, and a "call" has been issued to 6,000 farmers.

Amongst the topics discussed will be providing better means of marketing, centralizing of market conditions, arranging for subsidiary markets in small towns at least once a week, improvement in the marketing of truck garden products, creation of creameries, and the collection and shipping of poultry and dairying products.

The first gun in the provincial election, as far as Lethbridge is concerned, was fired last night when a conservative mass meeting was held. Among the speakers were Edward Michner, leader of the party; Mr. A. F. Ewing, and Dr. J. S. Stewart.

EDMONTON, ALTA.

The city assessor estimates that the assessment of 1913, now approaching completion, will show an aggregate of over \$200,000,000, as compared with some \$125,000,000 last year. The increase is accounted for partly by the enlargement of the area within the civic boundaries, but chiefly by the increase of property within the old boundaries. During 1912 Edmonton added about 20,000 people to its population, and bank clearings rose from 121 to 200 millions, materially enhancing property values.

The school board's building program for 1913 comprises buildings to cost in the neighborhood of a million dollars. The Standard Bank has opened an office here, making sixteen chartered banks in Edmonton, with twenty-seven branches. The Roman Catholic authorities have approved plans for the erection of a Church of the Sacred Heart, and tenders are being called for early construction; the cost is estimated at \$75,000.

The city council have decided upon the disposal of the \$98,000 surplus accumulated by the Municipal Light department by carrying on thousand of the sinking fund, five thousand to form the nucleus of an emergency reserve, and \$83,000 towards placing wires underground in the central districts.

WINNIPEG, MAN.

The building permits issued during February totalled \$725,800; two days before the end of the month the permits passed the million dollar mark for 1913. The most recent issued of permits included a \$30,000 addition to a local iron plant. February bank clearings were \$105,495,000, which, as compared with the same month of 1912, show an increase of 5 per cent.

Chartered have been recently granted to five new industrial companies, with a combined capital of half a million dollars. Tenders are being called for an agricultural college dairy building to cost \$50,000. Several other new buildings are announced—a new six storey business block, a new hundred thousand dollar hotel, etc.; and excavation work has already started on several new buildings for which permits were issued some time since, including a newspaper plant, a new church, club-house, and a large number of dwellings.

A Regina architect has been awarded the five thousand dollar prize for selected plans for the proposed three million dollar city hall for Winnipeg, on which work will probably begin this year.

The Winnipeg Industrial Bureau has published a very exhaustive re-

view and report on its work during 1912, which shows that no less than 69 factories located in the city in the year. Affiliated with the bureau is the Imperial Home-Relief Union Association, which during 1912 assisted 1500 wives and children to Winnipeg from the Old Country. The Merchants Bank is building a \$100,000 addition to its present building, and the city is constructing an electrical station to cost \$15,000. The question of electrical development has been receiving a great deal of attention in Manitoba recently, and carefully compiled estimates show that from twelve different sites alone it is possible to develop the enormous total of 6,421,000 h.p. Work has started on the addition to the Grain Exchange.

KENORA, ONT.

The value of the total output of bran, flour, fish, lumber, and gold bullion to the United States from Kenora during 1912 was \$436,654, against \$412,406 in 1911. Five hundred tons of blueberries were shipped during the season. Navigation on the Lake of the Woods is expected to open a week earlier this year than last, and prospects for a large influx of visitors seem excellent.

BRANDON, MAN.

Gordon, McKay & Co., Ltd., the great wholesale dry goods company of Toronto, Ont., after careful investigation, have decided to make Brandon their headquarters for the western trade. A building will be erected to cost \$100,000, and a first stock put in of the value of \$400,000. The new issue of Henderson's Brandon Directory places the population of the city now at 18,185.

Brandon will be the headquarters of what is described as the largest live stock feeding station in America, where cattle, horses, sheep and swine will be reared and supplied to the markets on a very large scale. Brandon has already subscribed over \$100,000, and a charter is being applied for by the formation of this company under the name of "The Moose Creek Farming Company," capitalized at \$450,000. Behind the enterprise are Hon. Hugh Armstrong, S. A. Bedford, deputy minister of agriculture, and other prominent men.

FORT WILLIAM, ONT.

The Western Elevator Co. has taken out a building permit for the erection of an annex to their grain house, to have a capacity for \$1,000,000 bushels. The contract has been awarded to a Chicago firm. The locating engineers on the proposed new railway line between Fort William and Duluth in a recent report to the Duluth and Northern Minnesota Railway advise of having practically decided upon the route to build, which will connect the United States and Canadian ports at the head of navigation on the Great Lakes by a line which will reduce the present mileage by over one-half and permit of direct communication with many important States centers.

The government's plans for the improvement of the harbor include the construction of a large slip, paralleling the present one, already completed at the Grand Trunk Pacific elevator plant on the Mission river. The latest industry is an engraving plant, under the proprietorship of W. A. Davidson. This will fill a long-felt want.

The Canadian Pacific Railway have awarded the contract for a three-million bushel annex to its elevator at Fort William, making the total capacity of that elevator seven million bushels. The Canadian Stewart Co. are the contractors.

REGINA, SASK.

At the last session of the legislature, \$1,200,000 was voted for the construction and improvement of high roads throughout the province this year. The proper maintenance of a road being quite as important as its construction, the sum of \$4,000 is to be offered for prizes to municipalities for the best kept roads. In February, thirty-eight new school districts were organized. The city assessor estimated that the assessment will this year reach eighty-five million dollars, an increase of ten million over 1912. The bank clearings for February were \$12,756,393, which, as compared with February, 1912, show an increase of 77 per cent.; while building permits (\$181,200) show an increase of 179 per cent.

Two building permits of unusual importance have been issued, one for a million dollar department store, another for a stonecutting yard. While the sheds for the latter will cost only about \$5,000, it is understood machinery costing about four times that amount will be installed. The yards are the first of their kind to be set up in the city. The total value of the buildings erected in towns, villages and cities in Saskatchewan in 1912 amounted to \$33,200,781, an increase of 87 per cent. over 1911.

Regina, following the worthy example of Calgary and Edmonton, is to have a town planning commission,

and the mayor announces that it will secure the services of an expert.

The contract has been let for the construction of a new Anglican college, to cost \$90,300. The Grand Trunk Pacific Railway, which is erecting a five storey hotel here, will spend about two millions altogether on this and the station.

The provincial government announces an enormous program of works to be carried out for the benefit of both farming and industrial interests in Saskatchewan. A Highway Commission has been formed to have supervision of all work connected with the roads, bridges, ferries, surveys and drainage in the province. A Water Commission has been appointed for the purpose of investigating the practicability of the diversion of the South Saskatchewan River for domestic and industrial purposes, and an investigation will also be held into the feasibility of generating power at the coal mines and distributing it to the various centers. A Commercial Club has just been organized, with an initial membership of 175; a good club site has been secured. Twenty teams have been purchased by the city at a cost of \$13,150 for scavenging, cleaning, and road-making.

With the first hint of spring, at Regina, Saskatchewan, realty values have started to advance, and the financial stringency which has existed throughout the cold months shows signs of breaking. The real estate dealers all report better business during the past week, and in the course of a week or two it is expected that conditions will be about normal. Despite the financial stringency throughout the winter, realty values have remained firm.

The unexpected advent of spring-like weather has also created quite a flurry among the contractors and builders of Regina. Operations have already commenced on the erection of some of the proposed big buildings, and with a continuance of the present good weather, in another week or two building operations will be in full swing.

Two million dollars is about to be spent by the Highway commissioners in the province of Saskatchewan during the coming summer. The program of road-making and improvements is an extensive one, including, as it does, proposed grants for municipalities; but the Highway Commission is not stopping at encouraging the municipalities to build roads. It realizes that it is just as important to encourage councils to maintain the roads in good condition after they are built. To do this, it has incorporated a competition in the using of the King drag. The amount of four thousand dollars has been set aside to be given in prizes to the municipalities showing the best results.

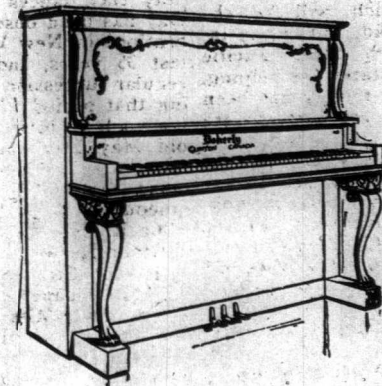
SASKATOON, SASK.

The ratepayers have passed money by-law authorizing civic improvements to the extent of \$702,000. The new street car system, which has been running only since the beginning of the year, is already proving a conspicuous success. The receipts during February showed a surplus of \$1,700 over January, although it was a shorter month. Building permits issued during February showed an increase of 52 per cent. over last February's, viz., \$102,000 against \$67,000.

Owing to the great civic development which took place last year, and the necessity for keeping pace with it, this, the city auditor estimates that the current expenditure account must be increased by sixty per cent., to \$800,000. Plans are out for a four storey apartment, with twenty-five suites, to cost \$90,000, and to be erected.

(Continued on Page Three.)

Read The Western Standard  
CALGARY'S NEWSIEST WEEKLY



All Pianos  
are Alike

That is, you can produce music  
(of a kind) from any piano.  
The point that interests you  
as a purchaser is

Am I Getting Full Value  
For My Money?

Is every dollar I am spending  
coming back to me in  
Musical Satisfaction?

We claim the DOHERTY,  
while not by any means the  
lowest priced, is, everything considered,  
the cheapest piano in  
Canada today.

You get full value in the instrument,  
not in talk.

WE CAN PROVE THIS—COME AND GIVE  
US A CHANCE

W. Doherty Piano and  
Organ Co., Ltd.

606 FIRST ST. WEST  
Lougheed Building

Tempus Fugit

Special man for Electric,  
Chime & Intricate Clocks

Phone M2440

**DICKENS**  
Watchmaker & Optician  
331 Eighth Ave., E.  
ISSUER OF MARRIAGE LICENSES

NEWS OF THE PROVINCES  
IN THE PROVINCES

(Continued from Page 1)

ed this spring. An Ontario implement manufacturer in Saskatoon their new point.

Plans have arrived from the new municipal architects estimate that the main, service, nurse tagious buildings will be hundred dollars. A similar to solve the housing shortage made by a doctor from plans the erection of this modern houses at a cost each.

VICTORIA, B.C.

A six storey apartment be erected on Fort Street of \$100,000. The plans Union Station show the \$300,000. There will be eight acres added to the Indian reserve by dredging. February bare \$13,950,000, an increase over February, 1912. ing permits issued totaling \$1,000,000. Fishermen at catches of herring tot tons, valued at \$300,000, with three weeks yet to steamer Tees brought 150 rings down from the Vancouver Island. Gations are on foot for water carnival, which first Victoria has held, an auguration of which Coast cities in the States. Very generous prize money put up, an already res being made on hotels.

Henderson's Directory sue of which is just on the population of Victoria 67,785, an increase over 21 per cent. The B.C. Fishery Commission is doubling the capacity at Jordan River. A estate deal was consummated. Wm. Sloan, formerly about 72 acres, about three miles from the center of an English syndicate for 000. The Canadian North has now four parties of locating the right-of-way which will bring the traffic down from Union Bay deep-water landing of the mainland will be terminus at Victoria. Dairy the tonnage of the out of Victoria increased as compared with Feb Coastline 357,655 tons, with 279,735; ocean trade compared with 298,018. that the Canadian Exp. Ltd., will establish a new lar powder plant at J East Coast, Vancouver. According to a newspaper B.C. Telephone Company have through communication Francisco; the idea is qu Railway construction, vice of British Columbia ing at a remarkable pace, now 1,890 miles of new construction.

VANCOUVER, B.C.

The provincial government announce the expenditure of the superstructure of the traffic bridge over the Pitt Mission, B.C., which will



Calgary B.C.

The B  
R

CALGARY'S

MACLEOD OPEN

MERCANTILE

SPECIAL A VO

TABLE D

A LA CARTE

CASSEROLE

PRIVATE DINING