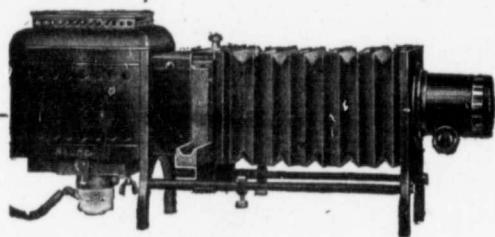


# The Part Pictures Play



**H**AS it occurred to you that pictures educate and entertain more than any other agency?

Visualizing the subject by the Lantern Slide creates and retains an intensive interest that commands concentration. The moment you throw the picture on the screen every eye is focussed on it and the point is readily assimilated. Old and young have always been taught best by pictures.

The successful use of the Lantern and Lantern Slide by Church, Sunday School, Day School, Missionary Society, etc., has proven conclusively that the realistic picture on the screen is the *first* aid to teaching.

The efficiency and simplicity of the **Model B Balopticon**, with 400-watt Mazda lamp have made it the leading instrument of its type. It may also be fitted with acetylene burner or with a 6-volt Mazda lamp, for use with storage battery where electricity is not otherwise available. An ideal instrument for classrooms, medium-sized auditoriums or the home.

<b>BM-12</b>	<b>Model B Balopticon with 400-watt, 115-volt Mazda lamp</b> 21 2 15-16 inch diam., 12-inch focus projection lens and carrying case.....	<b>\$60.00</b>
<b>BG-12</b>	Same as above, but with acetylene burner.....	<b>58.00</b>
<b>BM-6V-12</b>	Same as above, but with 6-volt lamp for use with storage Batte.....	<b>57.00</b>

*Write us for particulars*

**Presbyterian Publications**  
The Board of Publication of the  
Presbyterian Church in Canada  
CHURCH AND GERRARD STREETS, TORONTO