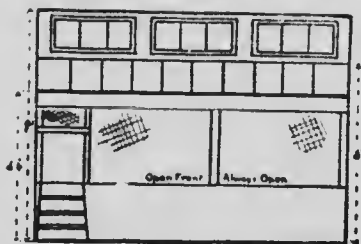
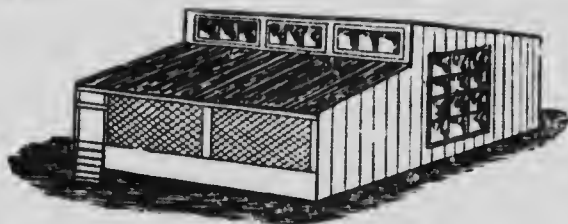


MONITOR TOP AND SEMI-MONITOR TOP HOUSE.

These styles of roof are frequently used where the house is very deep. The Monitor house is sometimes used where it is necessary to place the house north and south and facing east and west. In this case, the alleyway is run through the middle of the house and opens on both sides. This allows the morning sun in the east side, the evening sun in the west side, and the windows in the top permit the sunlight to strike the further row of pens. This type is sometimes adopted for housing ducks.

The other house, the Semi-Monitor type, may be used where a double row of pens is necessary, but is never practical except when facing the sun.



SEMI-MONITOR HOUSE.