

Mural Sports Corner

By Dieter Buse

Volleyball

This sport commenced Monday, Nov. 21 with 43 teams playing in seven leagues. League play will continue until Dec. 5 when playoffs between league winners will begin.

A schedule has been posted on the intramural bulletin board outside room 150 PEB. All games will be played between 7:30 p.m. and 10:30 p.m. on Monday, Tuesday and Thursday evenings. The main and west gyms will be used for league play.

All games will be to fifteen points or to the first team obtaining a two-point lead from a 14-14 tie. Teams consist of six players and must win two of three games to win the match. Games to date have had the following results:

Winner	Loser
November 21	
Monday—	
Phi Kap "A" — Kappa Sig "C"	

Phi Delta "B" — LDS "D"
Education "C" — DKE "A"
Education "B" — Phi Kap "C"
Kappa Sig "D" — Phi Delt "C"
Obnova "B" — Lambda Chi "C"
Lambda Chi "A" — Pharmacy
LDS "C" — Phi Delt "D"
St. Steve's "B" — Kappa Sig "E"
St. Steve's "A" — LDS "A"
DKE "B" — Commerce "B"

St. John's "B" — Kappa Sig "F"
 Kappa Sig "A" — Phi Kap "B"
 Education "A" — Lambda Chi "B"
 Phys Ed "B" — Engineers "B"
 Obnova "A" — Engineers "A"
 Phys Ed "A" — St. Steve's "C"
 Phi Kap "D" — LDS "E"

Tuesday—

Phi Delt "A" — Kappa Sig "B"
 St. Steve's "D" — LDS "B"
 St. John's "A" — Phi Delt "B"
 Education "C" — Kappa Sig "C"
 DKE "A" — LDS "D"
 Phi Delt "A" — St. Steve's "D"
 Kappa Sig "B" — Agriculture
 LDS "B" — Commerce "A"
 Education "C" — Phi Kap "A"
 St. John's "A" — DKE "A"
 Kappa Sig "C" — LDS "C"
 Education "B" — Kappa Sig "D"
 Phi Kap "C" — Obnova "B"
 Phi Delt "C" — Lambda Chi "C"
 Lambda Chi "A" — Phi Delt "D"
 St. Steve's "B" — Pharmacy
 Kappa Sig "E" — LDS "C"
 St. Steve's "C" — LDS "E"
 Phi Delt "A" — Agriculture
 St. Steve's "D" — Commerce "A"
 Kappa Sig "B" — LDS "B"
 St. John's "A" — Kappa Sig "C"

Monday—

Phi Kap "D" — Engineers "A"
 Phys Ed "A" — LDS "E"
 Obnova "A" — St. Steve's "C"
 Education "C" — LDS "D"
 Phi Delt "B" — Kappa Sig "C"
 St. John's "A" — Phi Kap "A"
 Education "B" — Obnova "B"
 Kappa Sig "D" — Lambda Chi "C"
 Phi Kap "C" — Phi Delt "C"
 Lambda Chi "A" — St. Steve's "B"

Thursday—

LDS "A" — DKE "B"
 Kappa Sig "F" — St. Steve's "A"
 St. John's "B" — Commerce "B"
 Kappa Sig "A" — Lambda Chi "B"
 Phi Kap "B" — Phys Ed "B"
 Education "A" — Engineers "B"
 Phi Delt "B" — DKE "A"
 LDS "A" — Kappa Sig "F"
 St. John's "B" — DKE "B"
 St. Steve's "A" — Commerce "B"
 Kappa Sig "A" — Phys Ed "B"
 Engineers "B" — Lambda Chi "B"
 Education "A" — Phi Kap "B"
 Phi Kap "A" — LDS "D"
 Phys Ed "A" — Engineers "A"
 Obnova "A" — Phi Kap "D"
 Kappa Sig "E" — Phi Delt "D"
 LDS "C" — Pharmacy
 Kappa Sig "E" — Lambda Chi "C"
 Obnova "B" — Phi Delt "C"
 Phi Kap "C" — Kappa Sig "D"
 Lambda Chi "A" — Kappa Sig "E"
 LDS "C" — St. Steve's "B"
 Phi Delt "D" defaulted Pharmacy



The Bouncing Basketball Bears are off on a whirlwind, four game, exhibition swing of Northern Montana this weekend. They will be calling in at Havre, Montana and Carrol College in Helena, Montana for a pair of games in each centre.

Last year the Golden Ones travelled to Helena and absorbed two defeats; so the men of Mendryk will be out to even that count.

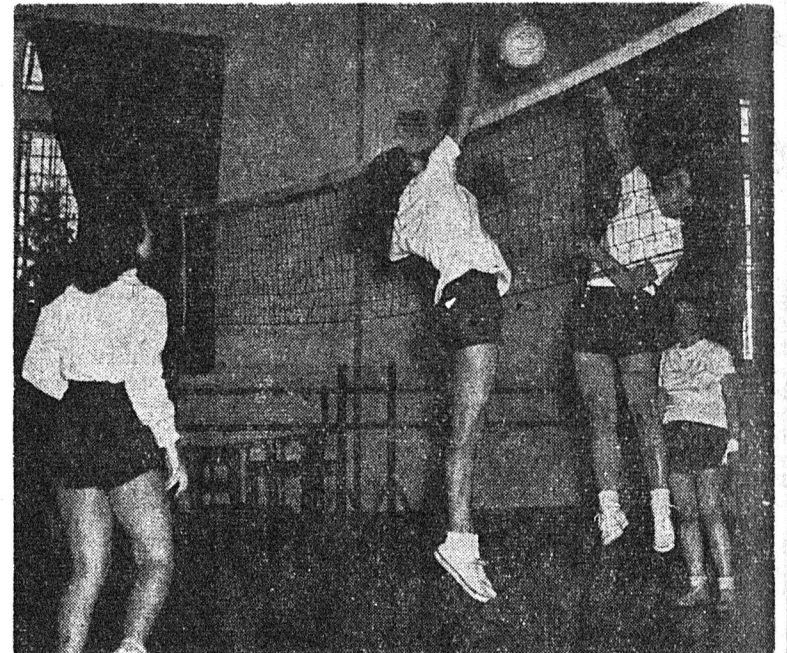


Photo definitely not by George

Carrol College will play a return engagement in the PEB gym early in December.

See where Gino Fracas, rookie phys ed staff member, has been voted by his teammates the winner of the Joe Clarke Memorial Trophy as the "most valuable player who had received the least recognition in 1960."

On last look at the intra-mural hockey results we noticed that Education "A" had just clobbered the Civil Engineers to the tune of 19-1. It seems Education is just not bigger than the Blue Coats (and rebel reds) but also better. Nuff said.

In the story concerning the death of Brutus, formerly Alcan Duke Torano III, we noted that the original

owner of the dog was not mentioned by name. Well for those who were wondering, it was a person well known to baseball fans at Renfrew and Southside parks; Tom Foran, umpire for the Renfrew ball games and also coach and first baseman of the Selkirk Saints of the Men's Major Fastball League.

The loss of Brutus will be felt by sporting fans also as he lived up many an encounter by his impromptu appearances at various games. He was a champion in his day and just couldn't shake the love of a crowd.

You were called too old and hopeless to ever make the play-offs. You made it but no one could quite see how you were going to live through the first round action in those playoffs. Somehow you managed to upset all the experts and win the first round rather easily. You were given no chance at all in the final play-off round but somehow again you managed to dupe the experts. You died a hardfought death last Saturday and finally bowed out. You were the Eskimos of 1960.

HAVING A HARD TIME SETTING THE WORLD ON FIRE? . . .

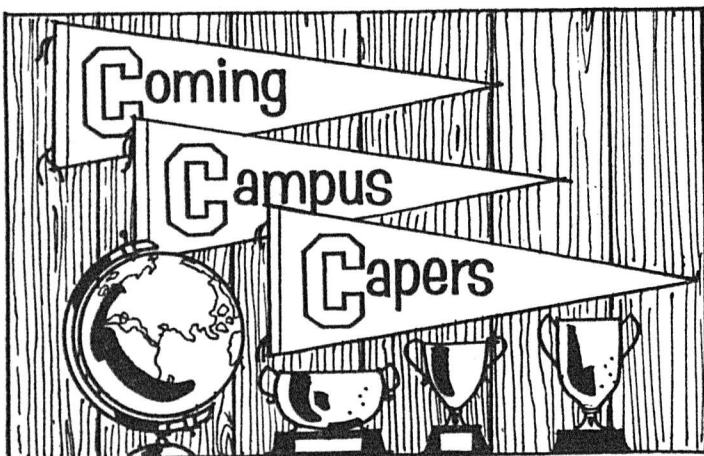
. . . Try lighting a fire under your Prof. with one of our VU-LIGHTERS

(Also useful for burning unpaid bills, traffic tags, old exam papers and unused Stan Kenton tickets.)

U of A colours and crest at no extra charge.

SPECIAL PRICE \$4.50

— see them in TUCK —



EVENTS

December—

- 2—Nurses-Engineers' Dance (Gym) Shoe
- 4—V.C.F. Carol Sing
- 5—Panhellenic Society Banquet
- 10—Latin Quarter Dance—Ed. Undergrad. Society
- 11—Musical Club Concert
- 12—Wauneita Christmas Party
- 14—Students' Wives Club Meeting
- 16—Handel's "Messiah", Jubilee Auditorium
- 17—Residence Christmas Dance

THE MILDEST
 BEST-TASTING
 CIGARETTE

Player's Please



A Reminder to Students

IBM INTERVIEWING

takes place on
December 2nd, 5th and 6th
 at the
Students Employment Service
 on the Campus.

Interested students are requested to register.

Mr. W. E. Redpath
 INTERNATIONAL BUSINESS MACHINES
 COMPANY LIMITED

10012 107th Street, Edmonton

December Sale

Quality footwear - Lowest prices!

Ladies' slippers, casuals, bals, Cord runners, evening shoes, and the latest in pumps, casuals and sandals with all heel styles — Squash, Jet, Illusion, Stacked, Queen Anne and Spike — and widths from AAA to EEE. From

\$2.95 to \$10.95

Clearance of Men's Shoes

Casuals, sport models, dress shoes in a good selection of styles and colors. Also a complete selection of smart, serviceable Hartt and Savage Seniors in an excellent choice of styles and widths.

From

\$5.00 to \$19.95

per pair

Chic Shoe Stores

10470-82 Ave. 9516-118 Ave.
 10075 - 156 Street