

TATTING.—No. 59.

ABBREVIATIONS USED IN MAKING TATTING.

d. s.—Double-stitch or the two halves forming one stitch. p.—Picot. *—Indicates a repetition as directed wherever a * is seen.

DOILIES WITH TATTED BORDERS.

FIGURES Nos. 1, 2 AND 4.—This pattern is made throughout with 2 d. s., 1 p., 2 d. s. Every ring has 5 p. and every chain

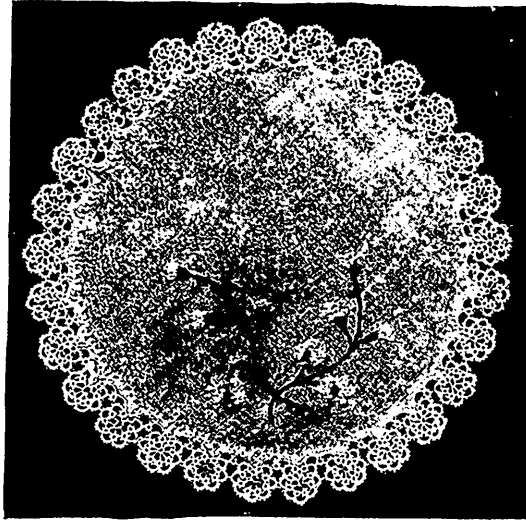


FIGURE No. 1.

has 5 p. except the two chains connecting the wheels; they each have 7 p. No. 50 cotton is satisfactory for most purposes.

First wheel.—(See detail at figure No. 2) Make a ring thus: *2 d. s., 1 p., 2 d. s., until there are 5 p. and close. Make a chain in the same way, and repeat from *, joining the 2nd p. of each ring to the 4th p. of the preceding one.

until there are 8 rings and 7 chains, joining the 8th ring as the others, also the 4 p. of 8th ring to 2nd p. of 1st ring; this completes the wheel.

Join the wheels thus: Hold the wheel upside down and make a chain of 2 d. s., 1 p., 2 d. s. until there are 7 p. Make a ring of 5 p. joining the 2nd p. to the middle p. in the last chain of 5 p. made in the wheel. Make another chain of 7 p.

Second wheel.—Make a ring, then a chain, joining the middle p. in chain to the 4th p. in ring made between the two 7 p. chains; then a ring joining the 2nd p. to the 4th p. in last ring, a chain joining middle p. to the middle p. of next to last chain in first wheel. Continue as in first wheel until you have 8 rings and 7 chains.

Use India linen for the centers, and button-hole the tatting on. Embroider the centers in any manner desired. The center of each wheel may be filled in with rick-rack stitch in the same shade as the prevailing color in the embroidery used on the centers of the mat.

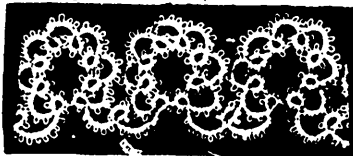


FIGURE No. 2.

FIGURES Nos. 1, 2 AND 4.—DOILIES WITH TATTED BORDERS AND DETAIL.



FIGURE No. 3.—TATTED EDGING.

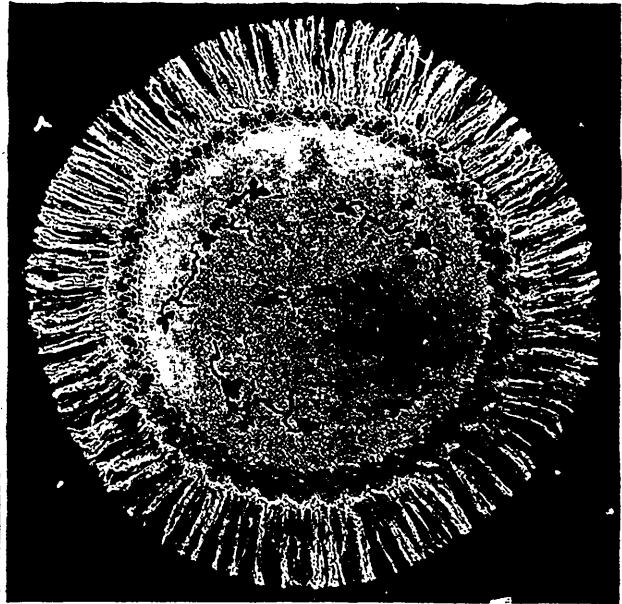


FIGURE No. 4.

work, take up the spool thread, work 2 d. s. and 1 p. until there are 12 d. s. and 5 p.; then begin again at *. Continue thus until required length is made. Now use three threads: Make 2 d. s., join to p. in top of 1st oval, make 4 d. s., turn the work, take up the other thread, lay it over a narrow mesh-stick, make 1 d. s., turn work, take the first thread used, make 4 d. s., turn again, lay the other thread over mesh-stick, make 1 d. s., turn again and join to p. in top of oval; continue thus the length of the piece.

For the heading use two threads. Take spool thread, make 2 d. s., join to the long p., 2 d. s., 1 p., 2 d. s., join to next long p. Continue in this way until the heading is finished.

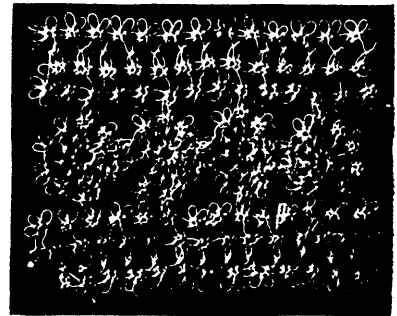


FIGURE No. 5.—TATTED INSERTION.

At figure No. 4 a fringed edge is shown. This may be made by knotting strands of the tatting thread into the picots of the border; or, a piece of linen large enough to allow for fringe may be used for the center and after the border is button-holed on the extra material may be fringed out and cut evenly in a circle.

TATTED EDGING.

FIGURE No. 3.—Fill the shuttle, but do not break the thread. * Make an oval with shuttle thread composed of 4 d. s. and 1 p., working until there are 16 d. s. and 3 p.; draw up. Turn the