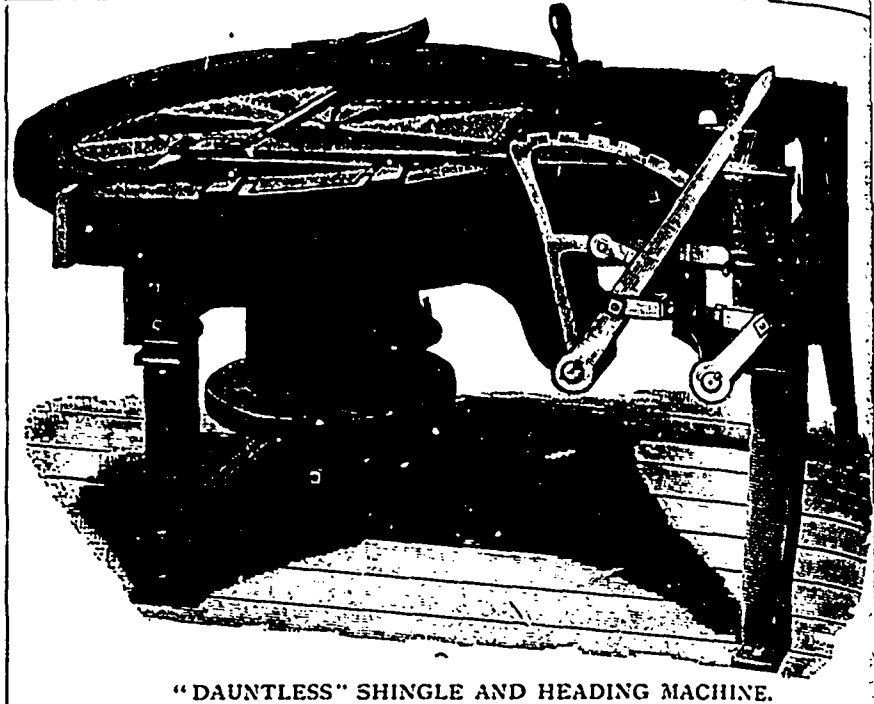


# Drake's Patent "DAUNTLESS" SHINGLE AND HEADING MACHINE

Capacity 30,000 to 50,000 per day.



"DAUNTLESS" SHINGLE AND HEADING MACHINE.

Costs less money than any other high grade machine and costs less to keep in repair.

The easiest machine to adjust or to change from Shingle Cutting to Heading or vice versa.

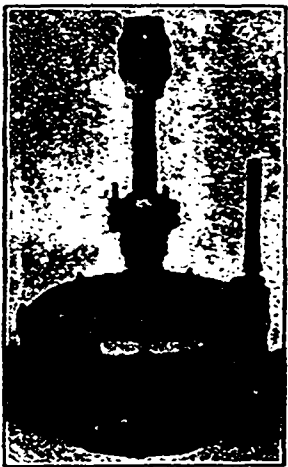
Carries large size Saws.

Cuts the widest and longest Shingle or Heading.

I manufacture Complete Outfits of Modern Circular Saw Mill Machinery, Shingle Mills, Lath Mills, Engines, Boilers, &c., &c.,

Send for Catalogue and let me Quote You Price on Anything You May Require. . . . .

**F. J. DRAKE** - Belleville, Ont.

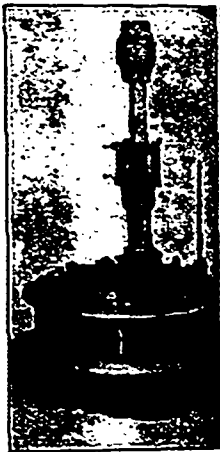


## THE LEFFEL AND VULCAN TURBINE

POSSESS DISTINCTIVE MERITS, which should have the attention of water power owners 1st—They are strongly and carefully built. 2nd—They are economical in their use of water. 3rd—They develop more power in proportion to the water used than

any other Turbine built. Mr. J. D. Flavelle, of the Flavelle Milling Co., of Lindsay, writes us under date of March 7th as follows :

" Referring to the two 74" water wheels (Leffels) purchased from you during the past year. As far as we have had an opportunity of testing, they have done their work excellently, in fact are doing more than you guaranteed them for. We took a test of the power they were developing with a head of water of 3 ft. 10 in., and they developed very close to 100 h. p. We are thoroughly satisfied with same." **This letter is but one of many such.**



We also Manufacture

The Lane Saw Mill, Four Styles of Shingle Machines, Lath Machine Edgers, Trimmers, Pulleys, Hangers, Boxes, Etc.

WRITE FOR PRICES AND CATALOGUE TO

**MADISON WILLIAMS**

H. E. Plant, Agent,  
Common and Nazareth Sts., **MONTRAE**L

SUCCESSOR TO  
PAXTON, TATE & CO.

**PORT PERRY, ONT.**