

Four "C.D.V." (half cabinet) photos, size 2 1/2 x 4 1/2 inches, for \$1.00. New Photo Gallery, Camera Section, Main Floor.

EATON'S DAILY STORE NEWS

Store Opens at 8.30 a.m. and Closes at 5 p.m.

Some of the Wednesday Values in Home Furnishings

Bamboo Curtains for Verandas, \$1.75 to \$4.00

A COOL VERANDAH and a much improved appearance to front of your home is obtainable at these prices according to the quality of this split bamboo will give good service; natural or green, each curtain is high and is complete with strong awning cord and galvaniz-

ed pulleys. Prices of green, 5-foot width, each \$1.75; 6-foot, \$2.00; 7-foot, \$2.25; 8-foot, \$2.75; 10-foot, \$3.25; 12-foot, \$4.00. Prices of natural: 5 x 8 feet, \$1.25; 6 x 8 feet, \$1.50; 7 x 8 feet, \$1.75; 8 x 8 feet, \$2.00; 10 x 8 feet, \$2.50; 12 x 8 feet, \$3.00.

Fringes for rugs or carpets in twisted linen or cotton and wool mixtures, or all wool knotted. Red, green, blue, brown, fawn, tan, and some combination colors. Widths from 3 to 4 inches. Yard, 8c, 12 1/2c, 20c and 25c.

ENGLISH ART CRETONNE, 30 inches wide, in new flowered, striped or conventional designs, and a variety of colors well suited for curtains, valances, cushion covers, and light upholstery. Yard, .16

FANCY CURTAIN NETS, 45 inches wide, in a new selection of small neat all-over patterns. Extra strong materials in ivory or ecru in soft pliable finish. Yard, at .28

—Fourth Floor.

Dependable Values in Staples

ENGLISH HEMSTITCHED PILLOW CASES made of sturdy white cotton, sizes 42 x 33 inches. Pair35

ENGLISH FULL BLEACHED SHEETING in a plain weave without dressing, 80 inches wide. Yard32

AMERICAN SILKOLINE COTTON COMFORTERS, printed in several good patterns and colors, and well filled with white carded cotton. Size 72 x 78 inches. Each2.00

WHITE OR GREY FLANNEL-ETTE BLANKETS, with pink or blue borders. An appropriate quality for summer use. Size 70 x 84 inches. Pair1.39

Bordered crash roller towel-ling, Irish manufacture, 17 inches wide. Yard11

Three-quarter or semi-bleached Irish table damask, 68 inches wide. Yard65

Hemstitched huckaback bed-room towels, strong quality, size 20 x 38 inches. Pair29

English full bleached raincoat, soft finish, 36 inches wide. Yard at10

White Saxony flannelette, serviceable weight and soft nap, 27 inches wide. Yard10

—Second Floor, James St.

TODAY In the GRILL

Roast leg of young pork with green apple sauce; mashed potatoes and stewed corn; fresh strawberry tart with ice cream, or baked tapioca pudding with cream sauce; club rolls and butter; pot of tea or coffee.50

—Grill Room, Fifth Floor.

25c Dinner in the Lunch Room Today

English beef broth; fried pork sausage with brown gravy or baked fillet salmon; trout; mashed potatoes; creamed parsnips; jelly roll; bread or rolls with butter; tea, coffee or milk.25

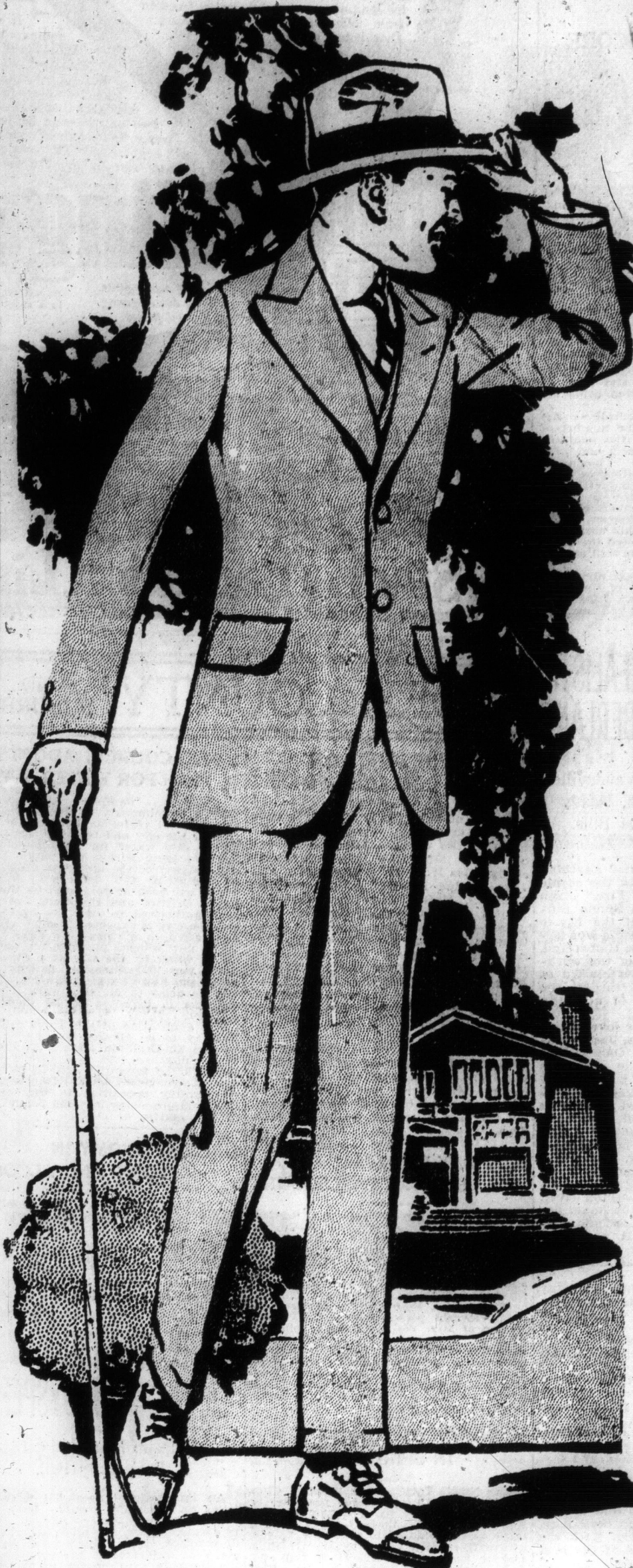
—Fifth Floor.

Fly Screens

Window Screens and Doors made to order. Frames of wood or steel, finished to color. Wire cloth in black, galvanized or bronze; estimates furnished promptly. Direct telephone call, Main 2735.

—Main Floor, Furniture Bldg.

Men! A Grey Suit is the Height of Fashion's Choice This Spring



Silver, Pearl and Oyster Greys Are the Leaders With the Old Reliable Oxford, Cambridge and Dark Greys Closely Following in Favor

IN the department on the Main Floor, men, both young and old, will find a huge selection of greys that combine and carry out the latest styles and patterns to the letter.

Patterns

GREYS WITH CHECKS.
GREYS WITH STRIPES
GREYS WITH CHECKS AND STRIPES
GREYS WITH COMBINATION EFFECTS

A Summary of the Style Features in the Showing of New Spring Greys

Coats

Single-Breasted.
Long, Narrow Lapels.
Notched or Peaked.
Form-Fitting Waist.
Natural Width Shoulders.
Patch, Straight or Slanting Pockets.
Patch or Plain Cuffs on Sleeves.
Two or Three-Button Sacks.
Rounded Fronts.

Vests

Close Fitting.
With or Without Collars.
With or Without Under-Flaps on Pocket.
Five or Six Buttons.

Trousers

Straight.
Narrow.
With or Without Cuffs.

For Young Men

The illustration on the left shows a very fashionable silver grey suit for the young man.

It has two-button, single-breasted form-fitting coat, with the popular round cut-away bottom, and soft, rolling, peaked lapels. The trousers are straight and narrow, with small cuffs. The vest has five buttons, and can be had with flaps on pockets if desired. Sizes 33 to 38. Price \$25.00.

Other Stylish Grey Suits For Young Men

\$12.50

YOUNG MEN'S SUITS, in cheviot and homespun effects. Tweed mixtures and thread stripes and mid-grey worsteds with a lighter grey thread stripe. Sizes 33 to 38. Price . . . 12.50

\$15.00

YOUNG MEN'S SUITS in pin check patterns, Glen Urquhart plaids and fancy weaves, with indistinct stripes in oyster grey . . . 15.00

\$16.50

YOUNG MEN'S SUITS, in grey, with very small checked patterns, with just a little color interwoven to brighten them up. Mostly smooth surfaced, closely woven materials. Price16.50

\$25.00

SOCIETY BRAND SUITS for young men, in mid-grey or blue-grey stripes, or a light grey over-plaid; all in cheviot finish. Price, 25.00

\$25.00 to \$30.00

YOUNG MEN'S SUITS, in light oyster and silver greys, with small checks, overplaids and thread stripes. Price, 25.00 and 30.00

Fashionable Grey Suits for Older Men at \$15.00 to \$25.00

\$15.00

MEN'S SUITS, made from sponged and shrunken British fabrics, mid-grey worsted and Oxford and Cambridge cheviots. Sizes 36 to 44. Price15.00

\$16.50

MEN'S SUITS of imported worsteds, in medium and dark greys, with pin check pattern, light thread stripe and diagonal, in a medium Oxford shade. Price . . . 16.50

\$20.00

MEN'S SUITS OF ENGLISH WORSTEDS in small patterns of grey. Also light grey overplaids. Price 20.00

\$25.00

MEN'S SUITS, made of worsteds, in silver and oyster greys; also oxford and dark greys. Price25.00

Youths' First Long Trousers Suits, \$7.00

At \$7.00, sturdy homespun tweeds in smart greys and browns, well cut and strongly sewn, in single-breasted styles, with fairly high cut vest and straight trousers with belt loops, side straps and choice of cuffs or plain bottoms. Sizes 32 to 35. Price7.00

At \$8.50, similar styles in light or medium grey homespun tweeds, a fancy weave in golden brown, and

a dark grey material with a narrow thread stripe in lighter grey. Well lined and neat fitting. Price . . 8.50

At \$10.00, new check patterns and overplaids; neat stripes, in fancy weaves; and fine stripes. The materials are tweeds and worsted finishes. Also navy blue worsteds in fine twill weave. All are single-breasted. Price 10.00

—Main Floor, Queen St.

Men's Light Weight Underwear for Spring and Summer Wear

MEN'S BALBRIGGAN underwear in a light fine weave, with saten and beige facings. They have long sleeves and close fitting ankle length leg. Sizes 34 to 46. Price29

MEN'S BALBRIGGAN COMBINATION underwear in plain natural weave, with short sleeves, knee or

ankle length leg and the comfortable closed crotch. Sizes 34 to 44. Price75

MEN'S AMERICAN MADE, Richmond Brand combination underwear of fine elastic rib. The natural shades have long sleeves and 3/4 length leg. The white have short sleeves and 3/4 length leg. Sizes 34 to 46. Price1.50

—Main Floor, Centre.

Some of the Wednesday Values in Home Furnishings

Floor Coverings

THE PROPER FLOOR COVERING will often transform a dingy room into the brightest spot in the home. It is the basis of all good furnishing. On the fourth floor, we have a tremendous display of almost every conceivable covering for the floor, and for the needs of May, the big moving month, the following items should find many a responsive thought in the minds of thrifty housewives.

WILTON RUGS of Oriental design in richly blended colors for almost any room. Among these is an artistic rug with a plain camel ground and a beautiful pendant border, in dark blue, brown and rose. Also with a blue ground and appropriate border colors. Size 6.9 x 9.0. Price 30.00

Size 9.0 x 10.6. Price . . . 48.00

Size 9.0 x 12.0. Price . . . 55.00

AXMINSTER RUGS in browns, greens and tans and small Oriental or conventional designs. Size 9.0 x 12.0 . . 24.50

BRUSSELS RUGS in wide variety of designs and colors suitable for any room.

Size 6.9 x 9.0. Price . . . 11.75

Size 6.9 x 10.6. Price . . . 14.25

Size 9.0 x 10.6. Price . . . 18.50

Size 9.0 x 12.0. Price . . . 21.50

NEW RAG RUGS in reversible patterns in washable colors and neat designs. These are well suited to the requirements of summer homes, verandahs or sun-rooms.

Size 27 x 54 in. Price . . . 1.65

Size 36 x 63 in. Price . . . 2.85

Size 4.0 x 7.6. Price . . . 6.50

Size 6.0 x 9.0. Price . . . 9.50

—Fourth Floor.

Wax and Linoleum

This is Scotch mild linoleum, a quality that is often used for floor coverings in dining-rooms, kitchens, offices, restaurants, etc.

Square yard1.00

HEAVY PRINTED LINO-LEUM, 2 yards wide, in block, floral, parquetry or tile designs, and durable brown, blue, grey, ivory or combination colors.

Square yard45

—Fourth Floor.

Wall Papers

Papers for attic rooms, bedrooms, etc.; with white grounds and floral stripe or set figure designs in blue, pink or yellow. Wall and ceiling, single roll, .5. Nine-inch border, yard1 1/4

PAPERS FOR HALLS, dining-rooms, kitchens or bathrooms, in set figure or block patterns or white grounds; also buff, brown, tan, or green grounds with set figure patterns, in darker shadings. Wall and ceiling, single roll, .7. Nine-inch border, yard2

PAPERS FOR BEDROOMS in white, cream, or light grey grounds, with stripe or flowered patterns, blue, pink, mauve or yellow. Wall or ceiling, single roll, .8. Nine-inch border, yard at2

PAPERS IN LIGHT GREEN and cream combinations for parlors, and rich darker shades of brown, blue, green or tan for dining-rooms or halls. Wall or ceiling, single roll, .10. Eighteen-inch frieze, yard4

PAPERS FOR BEDROOMS, in all-over, chintz, floral, stripe or small figure patterns on light grounds and delicate colors. Wall and ceiling, single roll, .15

Nine-inch borders3 1/4

Eighteen-inch borders5

—Fourth Floor.

Waxes and Polishes

Johnson's Floor Wax, lb.45

Old English Floor Wax45

Diamond E Floor Wax45

C. & B. Floor Wax45

Ronuk English Floor Wax, tin 25 and50

Johnson's Liquid Wax, qt.25

C. & B. Liquid Wax, qt.25

Cross Furniture and Woodwork Polish, 25 and50

Cross French Floor Dressing, 25 and50

Cross Metal Polish, tin, 16 and 25

Liquid Veneer, 25 and50

O'Ceard Polish, 25 and50

—Fourth Floor.