

OUR CHESS COLUMN.

Solutions to Problems sent in by Correspondents will be duly acknowledged.

TO CORRESPONDENTS.

J. W. S., Montreal.—Correct solution received of Problem No. 226. Letter received. Thanks.
Student, Montreal.—Correct solution received of Problem No. 225.
W. A. L., Toronto.—Answer sent by post.
E. H., Montreal.—Correct solution of Problem for Young Players No. 224 received.
J. B., Montreal.—Score of game received. It shall appear in the next column. Thanks.
R. F. M., Sherbrooke, P. Q.—Correct solution received of Problem No. 227. In your solution of Problem for Young Players No. 224, Black's Pawn can Queen at his 4th move.
W. L., New York.—Postal card received. Many thanks.

CANADIAN CHESS ASSOCIATION—SEVENTH ANNUAL CONGRESS.

Table of games played at Montreal in the Tourney commenced August, 1878.

Table with columns for player names (Dr. Howe, Prof. Hicks, John Henderson, etc.) and rows for various chess pieces (Howe, Hicks, Henderson, etc.) with numerical values indicating game results.

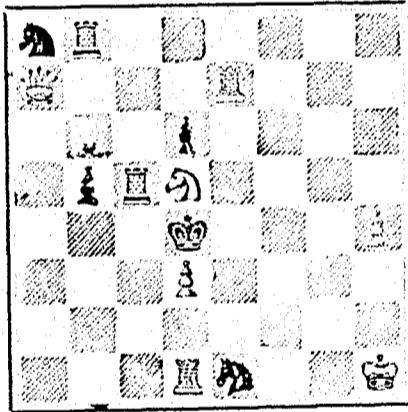
THE WINNERS.

Table listing winners and their points: J. G. Ascher (1st Prize, 10 Points), Dr. Howe (2nd do, 9 1/2 do), Prof. Hicks (3rd do, 8 1/2 do), E. B. Holt (4th do, 7 1/2 do), J. W. Shaw (5th do, 7 1/2 do).

PROBLEM No. 228.

By G. J. Slater.

BLACK.



WHITE.

White to play and mate in three moves.

GAME 365TH.

CHESS IN ENGLAND.

Played at St. George's Club, London, in the late University match.

(Roy Lopez.)

WHITE.

(Mr. Gunston, Cambridge.)

- 1. P to K 4
2. Kt to K B 3
3. B to Kt 5
4. P to Q 3
5. B to R 4
6. Castles
7. R to K sq
8. B to K 3
9. Q to Q 2
10. B to Q Kt 3
11. P to Q B 3
12. P takes P
13. P to K R 3
14. Kt to K B sq
15. Kt to K Kt 3
16. P to Q 1
17. Kt to K 5
18. P takes Kt
19. B takes Kt
20. R to K 2
21. Q to K sq
22. P to K 6
23. Q R to Q sq
24. Q takes R
25. R to Q 2
26. K takes B
27. K takes P
28. K to K 2
29. Q takes R
30. K to K B sq
31. P to K 7

BLACK.

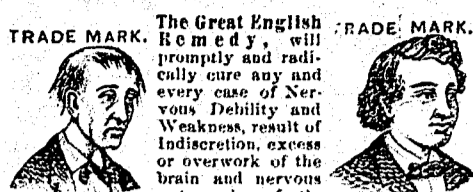
(Mr. Gattie, Oxford.)

- 1. P to K 4
2. Kt to Q B 3
3. Kt to K B 3
4. P to Q R 3
5. P to Q 3
6. B to Kt 5
7. B to Kt 2
8. Castles
9. P to Q Kt 4
10. P to Q 4
11. P to K B 3
12. Kt takes P
13. B to K R 4
14. K to R sq
15. B to K Kt 3
16. P to K 5
17. Kt takes Kt
18. Kt takes B
19. B to Q B 4
20. P to K B 4
21. Q to K 2
22. Q R to Q sq
23. B takes R
24. R to Q sq
25. B takes P (ch)
26. P to K 6 (ch)
27. Q to K Kt 4 (ch)
28. R takes R (ch)
29. Q takes Kt
30. P to B 5
31. B to K sq

A meeting of the Managing Committee of the Seventh Annual Congress of the Dominion Chess Association took place at the Gymnasium, Mansfield street, Montreal, on Tuesday last, June 3rd, for the purpose of endeavouring to bring to a conclusion the Tourney which was commenced in August, 1878.

In presenting the following table, showing the standing of the competitors in this contest, it is but right to state that the encounter began on Tuesday, August 2nd, 1878, and was finished last Tuesday, 3rd June, 1879; that nearly the whole of those who entered the lists, had finished their games at the end of a fortnight or three weeks after the opening of the Tourney; and, also, that one competitor, Mr. E. B. Holt, of Quebec, had concluded the whole of his games at the end of the first week's play. The delay in the termination of the Tourney was due to a great extent to the neglect of the Managing Committee in not adopting a time limit at the beginning of the contest.

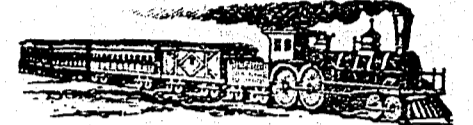
GRAY'S SPECIFIC MEDICINE.



Before Taking... After Taking... Full particulars in our pamphlet, which we desire to send free by mail to every one.

THE GRAY MEDICINE CO., WINDSOR, ONT.

Sold in Montreal by all Wholesale and Retail Druggists, and everywhere in Canada and United States.



GOVERNMENT RAILWAY. Western Division.

SHORTEST AND MOST DIRECT ROUTE TO OTTAWA.

On and after MONDAY, APRIL 14th, Trains will leave HOCHELAGA DEPOT as follows: Express Trains for Hull at 9.30 and 5.00 p.m.

Trains leave Mile-End Station ten minutes later. General Office, 13 Place d'Armes Square. STARNES, LEVE & ALDEN, Ticket Agents.

THE COOK'S FRIEND BAKING POWDER

Has become a HOUSEHOLD WORD in the land, and is in every family where Economy and Health are studied. It is used for raising all kinds of Bread, Rolls, Pancakes, Griddle Cakes, &c., &c.



SAVE TIME. IT SAVES TEMPER. IT SAVES MONEY. For sale by storekeepers throughout the Dominion, and wholesale by the manufacturer.

IMPORTANT NOTICE. THE BURLAND-DESBARATS LITHOGRAPHIC CO.

5 & 7 BLEURY ST., BEGS TO INFORM THE BANKERS, MERCHANTS and BUSINESS MEN of the Dominion, that their large establishment is now in full operation, and that they are prepared to do all kinds of ENGRAVING, ELECTROTYPING, STEREOTYPING, LITHOGRAPHING and TYPE PRINTING.

From the facilities at their command, and the completeness of their establishment, the Company feel confident of giving satisfaction to all who entrust them with their orders. G. B. BURLAND, Manager.

PURE COCOA. ROWNTREE'S Prize Medal ROCK COCOA.

As this article contains no admixture of Fat, can be taken not to put too large a quantity into the cup.

NOTE. Beware of inferior makes, sometimes substituted for the sake of larger profits. UN DURHAM X CORN L D FLOUR.

British American BANK NOTE COMPANY, MONTREAL.

Incorporated by Letters Patent. Capital \$100,000.

General Engravers & Printers

Bank Notes, Bonds, Postage, Bill & Law Stamps, Revenue Stamps, Bills of Exchange, DRAFTS, DEPOSIT RECEIPTS, Promissory Notes, &c., &c., Executed in the Best Style of Steel Plate Engraving. Portraits a Specialty. G. B. BURLAND, President & Manager.

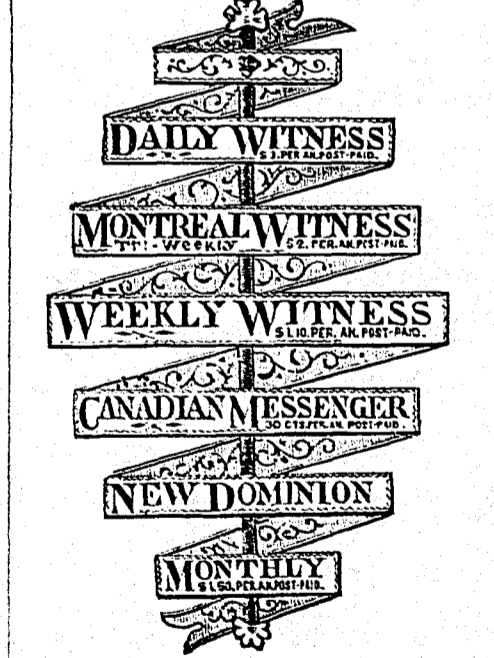
JUST PUBLISHED

CHISHOLM'S ALL-ROUND ROUTE AND PANORAMIC GUIDE OF THE ST. LAWRENCE,

With corrections to date. It contains full descriptions of the points of interest on the "All Round Route," including Hudson River, Trenton and Niagara Falls, Toronto, Ottawa, Montreal, Quebec, Saguenay River, White Mountains, Portland, Boston, New York. It is profusely illustrated, and is furnished with maps of the Route, and a fine panoramic view of the St. Lawrence River. For sale by booksellers and news agents. Sent post-paid to any address on receipt of the price, 50 cts.

C. R. CHISHOLM & BROS., 179 Bonaventure street, Montreal.

CHEAPEST AND BEST.



JOHN DOUGALL & SON, 218 and 220, St. James Street, Montreal. Electrotyping and Job Printing, Chromatic and plain.

TO LET.

In those central premises forming the corner of Bleury and Craig Streets, and in the adjacent house on Craig Street—OFFICES, double and single. FLATS, admirably adapted for light manufacturing business, with or without steam power. Rent moderate. Apply to G. B. BURLAND, No. 7 Bleury Street.

\$777 A YEAR and expenses to agents. Outfit Free. Address: P. O. VICKERY, Augusta, Maine. \$10 to \$1000 invested in Wall St. Stocks makes fortunes every month. Book sent free explaining everything. Address BAXTER & CO., Bankers, 17 Wall St. N. Y.

50 Fortune, Snowflake, Chromo, Motto Cards, name in gold & jet. 10c. G. A. SPRING, E. Wallingford, Ct. 50 Perfumed Chromo and Lace Cards, name in gold in fancy case, 10c. Davids & Co., Northford, Ct.