

# Miners Wanted

TO CHEW

# PAY ROLL

Plug Tobacco

## WANTED.

At the several collieries of the Dominion coal co. Limited, skilled coal miners and mine laborers.

Apply on the works Or by letter

Dominion Coal Company, Ltd

**Genuine Garlock Packings**

FOR ALL PURPOSES.

**Pipe and Boiler Coverings,  
ENGINEERS SUPPLIES.**

also

**"Tauril" High Pressure Jointing  
the Best Sheet Packing yet  
Produced.**

**THE GARLOCK PACKING CO.**  
HAMILTON, ONTARIO.

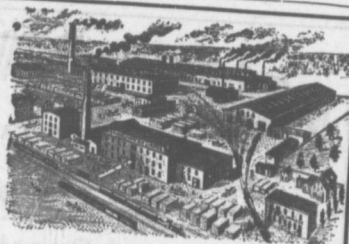
Used by Collieries in Lancashire, Staffordshire  
& Yorkshire

**'XTERRA'** COLLIERY LAMP OIL.

For Masant, Maseels Deflector or Closed Lamp

PURE WHITE FLAME LOW PRICE  
**E. WOLASTON, Dutton St MANCHESTER**

Sole Representatives for Canada, AUSTEN BROS.,  
Halifax, N. S.



RAILWAY  
STREET and  
MINING

—MANUFACTURERS OF—

## CARS,

CAR WHEELS  
FORGINGS &  
CASTINGS

Church Pews,  
Fittings for Stores, Schools, &  
A SPECIALTY

Large Stocks of Foreign and Domestic Lumber on Sale.

**Rhodes,  
Curry & Co., Ltd.**  
Branch ROBBIE STREET,  
HALIFAX, N. S. BUILDING MATERIALS  
GENERAL  
AMHERST, N. S.

## INTERCOLONIAL RAILWAY

On and after SUNDAY, OCT. 13 1907 trains  
run daily, Sunday excepted, as follows:—

—TRAINS LEAVE STELLARTON—

No 144 Mixed for Hopewell	5.55
No 79 Mixed for Trenton	6.30
78 Mixed for Hopewell	6.55
18 Express for Halifax and St. John	7.40
21 Mixed for Pictou Landing	7.40
62 Mixed for Pictou	7.45
65 Mixed for Mulgrave	8.30
19 Express for Pictou	11.10
35 Mixed for Pictou	12.35
56 Mixed for Truro	12.35
150 Mixed for New Glasgow	12.55
30 Express for the Sydney	12.55
140 Mixed for Halifax and Montreal	12.55
141 Mixed for Pictou Landing	12.55
25 Mixed for New Glasgow	13.45
60 Mixed for New Glasgow	13.50
36 Express for Halifax and St. John	13.50
17 Express for New Glasgow	13.50
66 Express for Pictou	13.50

—TRAINS ARRIVE AT STELLARTON

79 Mixed from Trenton	6.30
61 Express from Pictou	6.55
18 Express from New Glasgow	7.30
21 Mixed from Hopewell	7.35
65 Mixed from Truro	7.55
35 Mixed from New Glasgow	8.00
57 Mixed from Pictou	10.55
60 Mixed from Mulgrave	10.55
19 Express from Halifax and St. John	12.35
140 Mixed from Pictou	12.55
85 Express from Halifax and St. John	12.55
20 Express from Sydney	12.40
20 Mixed from Pictou Landing	12.50
77 Mixed from Hopewell	12.10
62 Mixed from Pictou	12.55
30 Express from New Glasgow	12.55
17 Express from St. John and Halifax	12.40
66 Express from Pictou	12.40

All trains are run by Atlantic Standard time. Weekly four  
O'clock to mid-night. Monoton, N. B. OCT 12th, 1907

Buffet Sleeping cars on trains 85 and 86 between Halifax  
and Sydney. Dining cars between Halifax and Mulgrave.  
Buffet Parlor Car on Trains 19 and 20 between Halifax and  
Sydney. Dining cars between Mulgrave and South River