

CHESS.

The proprietors of THE CRITIC offer two prizes—to consist of books on Chess—to those subscribers who shall send in the greatest number of correct solutions during the current year. No entrance fee required.

CHESS NEWS.

A Chess Club was organized in this city on the 19th inst at the rooms of the Church of England Institute.

Officers were appointed and weekly meetings for play arranged.

Members meet on Friday evenings and on Tuesday afternoons.

The officers are John T. Wyld, President, Harry Borradaile, Secty., Dr. Allison, J. Dewolf, W. Hetewman, Committee of management.

We wish the club every success.

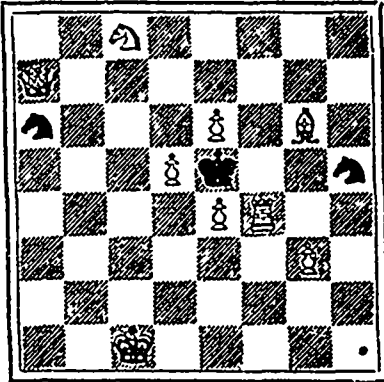
Solution to Problem No. 106, B to R4. Solved by J. W. Wallace and Mrs. H. Mosley.

PROBLEM No. 108.

By T. Taverner, Bolton, England.

From Montreal Gazette.

BLACK 3 pieces.

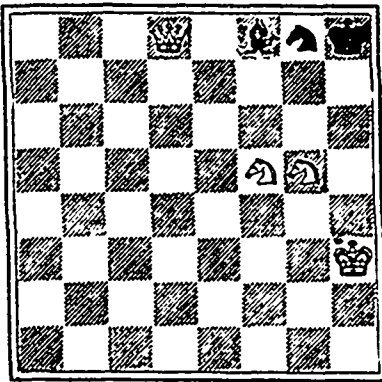


WHITE 9 pieces.

White to play and mate in 2 moves.

Corrected diagram of No. 107, 3 mover.

BLACK 3 pieces.



WHITE 4 pieces.

White to play and mate in 3 moves.

GAME No. 89.

Played at the Breslau Tournament.

Table showing chess moves for Game No. 89, listing White and Black pieces and their corresponding moves.

Table showing chess moves for Problem No. 108, listing White and Black pieces and their corresponding moves.

NOTES.

a Played, probably, to prevent the Bishop being driven out of play, or exchanged for the Knight.

b Weakening the Centre Pawns.

c Preparing the way for the entrance of the Kt at QB4.

d White now makes preparations for an advantageous break on the Queen's side, which Black is unable to prevent.

e The ending is played by the Doctor in capital style.

f If Black now takes the Kt White plays Q to B8 ch, afterwards checking with the R winning the Q; but White cannot then take the Kt on account of the threatened mate, so that there was considerable play left—Gazette.

DRAUGHTS-CHECKERS

The proprietors of THE CRITIC offer two prizes—to consist of books on Checkers—to those subscribers who shall send in the greatest number of correct solutions during the current year. No entrance fee required.

SOLUTIONS.

PROBLEM 142.—The position was:—Black men 18, 21, 23, king 14; white men 3, kings 7, 27; white to play and draw.

Table showing draughts game results for Problem 142, listing game numbers and outcomes.

GAME XXXVII.—SOUTER.

Played between Messrs. Granville and Lynch at the late team match at Shubenscadie, the former playing first:

Table showing draughts game results for Game XXXVII, listing game numbers and outcomes.

VAR. I.

As played between Messrs. Forsyth and Forbes in the same match.

Table showing draughts game results for Variation I, listing game numbers and outcomes.

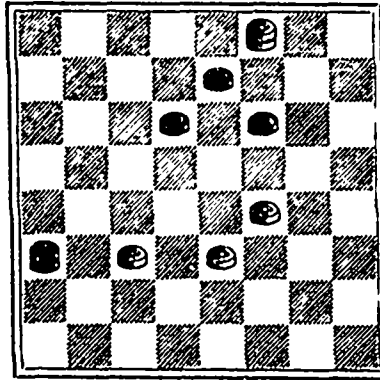
Table showing draughts game results for Problem No. 144, listing game numbers and outcomes.

This is very badly played, as it gave white the opportunity of securing a draw by 27; 26-31 was the proper move, as it would have forced the win.

PROBLEM No. 144.

The following neat position is from a late issue of the Daily Recorder.

Black men 7, 10, 11, king 21.



White men 19, 22, 23, king 3.

A postal card will easily hold the solution. Are there a score of players in Nova Scotia who will each send a card?

Cable Address, Pittbros., Lon.

PITT BROS. & CO.

IMPORTERS OF

NOVA SCOTIAN APPLES, 46 Queen Victoria St.

LONDON, ENG.

Consignments solicited and liberal advances made thereon.

Iron, Iron, Iron.

SUMMERLEE, MIDDLESBORG, LONDONDERRY, } PIC.

English Best Refined Bars, English Refined Bars, Londonderry Best Refined Bars, Londonderry Refined Bars.

ACADIA BOLT, ST. JOHN BOLT, Sheet and Hoop Iron, Angle and Bridge Iron.

FOR SALE BY

Wm. Stairs, Son & Morrow

1889-FALL AND WINTER-1890.

COLEMAN & Co.

have completed their full stock of

FALL & WINTER GOODS,

INCLUDING

Gents Satin & Stiff Felt Hats, From the leading London Houses.

American & English Soft Felt Hats, in All Colors. Also,

Youths', Boys' and Children's Hats and Caps in great variety.

CLERICAL HATS A SPECIALTY.

Our Stock of FURS have been personally selected in LONDON and MONTREAL, and we are now showing the finest of articles in the following lines at fair prices:—

LADIES' ALASKA SEAL NEWMARKETS, LADIES' ALASKA SEAL WALKING JACKETS, LADIES' ALASKA SEAL SACQUES.

(ALL LONDON DYE.)

Also, Ladies' Jackets in Baltic Seal & Astrachan A large stock of Bear Boas, Fox-Tail Boas, &c., Shoulder Capes, Collars, Muffs, Gloves, &c.

Our Fur Lined Russian Oloaks Are the latest Styles in shape and material, and all made to order.

GENTS' FURS OF EVERY DESCRIPTION. ROBES, FUR COATS, TRUNKS, VALISES, &c

143 GRANVILLE STREET, FURS ALTERED AND REPAIRED.

FOR

- For Hair Brushes, Tooth Brushes, Nail Brushes, Shaving Brushes, Flesh Brushes, Sponges, Bath Gloves, Fine Perfumes, Toilet Soaps, Drug gist's Sundries, and Toilet Requisites of every description, come to the

AGADIA DRUG STORE, 155-Hollis Street-155, HATTIE & MYLIUS.

NATIONAL COLONIZATION LOTTERY.

Under the Patronage of Rev. Father Labelle Established in 1881, under the Act of Quebec. 52 Vict., Chap. 88 for the Benefit of the Diocesan Societies of Colonization of the Province of Quebec.

CLASS D. The 29th Monthly Drawing will take place On WEDNESDAY, Dec. 18th, 1889. At 2 o'clock, p.m.

PRIZES VALUE, \$50,000. Capital Prize—1 Real Estate worth \$5,000.00

LIST OF PRIZES. 1 Real Estate worth \$5,000 \$5,000 1 Real Estate worth 2,000 2,000 1 Real Estate worth 1,000 1,000 4 Real Estates worth 500 2,000 10 Real Estates worth 300 3,000 30 Furniture Sets worth 200 6,000 60 Furniture Sets worth 100 6,000 200 Gold Watches worth 50 10,000 1000 Silver Watches worth 10 10,000 1000 Toilet Sets worth 5 5,000

2307 Prizes worth \$50,000.00

TICKETS \$1.00.

It is offered to redeem all prizes in cash, less a commission of 10 per cent. Winners' names not published unless specially authorized.

DRAWINGS ON THE THIRD WEDNESDAY OF EVERY MONTH.

S. E. LEFEBVRE, Secretary, OFFICES—19 ST. JAMES ST., MONTREAL, CA.