

NEW CANADIAN BRANCH

The JEFFREY MFG. CO.

LAGAUCHETIERE AND COTE STS.

MONTREAL, CANADA

MANUFACTURERS OF

ELEVATING
SCREENING
MINING
COAL HANDLING**MACHINERY**CONVEYING
DRILLING
CRUSHING
COAL WASHING

STANDARD AND SPECIAL CHAINS.

POWER HOUSE EQUIPMENT.

**FIRE ALARM
APPLIANCES**

Every second saved in getting the firemen to the fire may mean hundreds of dollars saved—a minute may prevent a conflagration.

Insist on having the safest, simplest, surest, quickest appliance—the one used by nearly all the big cities in America. It is the

NON-INTERFERENCE FIRE ALARM SIGNAL BOX

Where several boxes are on the same circuit the act of sending signals from one shuts off the others, so there can be no confusion.

Pull down operating lever—the box does the rest.

So simple that anyone can operate it, no matter how excited.

WRITE FOR CATALOGUE.

THE NORTHERN ELECTRIC & MFG. CO.,

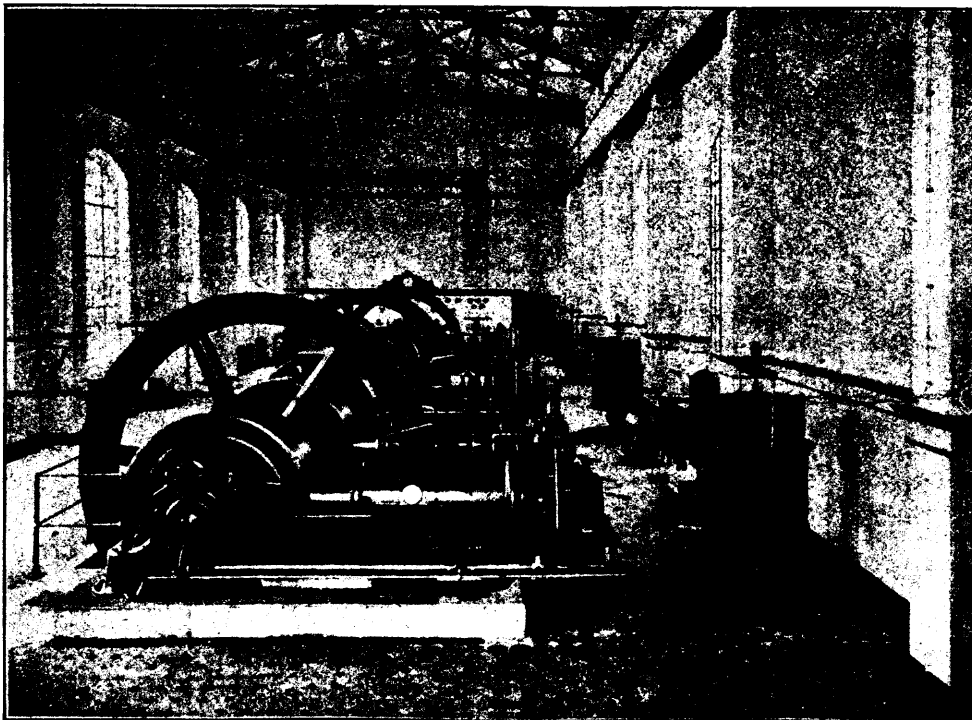
LIMITED

MONTREAL**THE CHEAPEST POWER KNOWN**NATIONAL GAS ENGINES
PINTSCH SUCTION GAS PLANTS**PLANTS**

No Smoke
No Pressure
No Danger
No Leakage
No Gas Holder
No Noise
No Boiler
No Chimney

Engines in sizes from 2 to 800 B.H.P.

Suction Gas Plants in sizes from 10 to 1,000 B.H.P. in single generators.

**ENGINES**

Simplest
Most Durable
Perfect Regulation
Small Gas Consumption
Easy Starting
No Noise
Low Cost
Loose Liners
Vertical Ball Governors

Total Power already installed, over 200,000 B.H.P.

Send for Catalogue and Prices.

THE ECONOMIC POWER, LIGHT & HEAT SUPPLY CO., Limited - 40 YORK ST., TORONTO
N. J. HOLDEN CO., Limited, Montreal, Agents for Province of Quebec.