

Commercial.

THE FARMER'S ADVOCATE OFFICE,
London, Ont., Feb. 1, 1886.

We have had another month of mild weather, with light falls of snow and sudden changes from very cold to mild weather. Trade has been quiet, and merchants are looking forward to sleighing, with the hope that farmers will take advantage of good roads and move their produce.

WHEAT

Has ruled very dull the past month, and there is little hopes of much improvement for another month or two, and by that time the prospects of the growing crop will then become an important factor.

A leading commercial paper reports the American market as follows:—

The weather conditions during the week have not been unfavorable to the new crop of winter wheat, except possibly in the less important southern districts where it was not protected by snow and where alternate freezing and thawing occurred. Most of the country where the bulk of the winter wheat is produced has had the ground well covered with snow during most of the winter; in some places it was rather thinly protected, but up to the present time there has nothing occurred to give apprehensions of any serious damage to the wheat plants, which are very hardy and can sustain without serious injury a very low temperature, provided the position of the roots in the ground is not disturbed.

The course of the speculative wheat markets has been downward in this country, while values in Liverpool have not changed much, and yet the export movement has not been greatly enlarged. There is a further reduction in the visible supply, which, however, is much larger than a year ago, and the prediction that values would improve when supplies began to diminish has proved that the prophets (as well as the profits) can not always be relied upon.

The stocks of wheat and corn at twenty-one leading interior and seaboard markets east of the Rocky Mountains, in transit from the West to the seaboard, and afloat on the ocean, destined for Great Britain and Continental Europe, on dates named, were as follows:

	Wheat, bu.	Corn, bu.
Total, January 11, 1886	73,780,000	11,322,000
Previous week	73,533,000	11,354,000
Total, January 12, 1886	63,448,000	8,064,000
Total, January 13, 1886	53,977,000	12,110,000
Total, January 14, 1886	42,563,000	11,509,000
Total, January 15, 1886	47,142,000	18,591,000

CLOVER SEED.

As yet there has been no movement of red clover seed. Farmers are either holding back or have not threshed. No doubt both these causes have something to do with the very meagre offering at present.

Alsike has been moving much more freely, and the price is very reasonable, although there is a very wide range of prices, all the way from \$4.50 up to \$7 having been paid by shippers. The latter figure for very choice samples. The cause for this wide range of prices is this: that while really fine samples are wanted for export, there is not export demand for the medium and lower grades. These will have to find a market at home, and for ordinary seeding are just as good as the finest and more expensive samples. With the moderate price of alsike, and the fact that one bushel of alsike will go as far as two bushels of common red clover in seeding (from the fact of the alsike seed being so fine), farmers need not want for seeding clover at moderate prices. We think farmers will do well to turn their attention more to seeding with alsike and

other grasses, and not depend so much upon red clover and timothy.

LIVE STOCK.

The Montreal Gazette reports the live stock market in that city under date of the 27th ult., as follows:—

The following were the receipts of live stock at Point St. Charles by the Grand Trunk Railway:—

	Cattle.	Sheep.	Calves.	Hogs.
Week ended				
Jan. 23..	1,041	632	65	40
Prev. week..	718	398	16	86
Since May 1,				
1885.....	75,697	58,899	4,701	13,279

The cattle market since our last has ruled quiet. At the Point St. Charles this morning business was dull. Receipts have been more liberal, in fact 800 head were received to-day, which glutted the market and weakened prices, as there was little demand, buyers holding off for lower prices. Export cattle were dull and lower at 4c@4½c per lb. live weight, and exporters were not buyers, partly owing to unfavorable cable news. There was a slow demand for butcher's cattle, but values were about steady at 2c@3½c per lb. as to quality. The offerings of sheep were light and demand slow at 3½c per lb., with lambs in fair request at 4½c. Live hogs were in light supply and higher at 4½c per lb.

CHEESE.

The cheese market remains steady with a firmer tendency all round. There is a decided difference between the tone of the present cheese market and that of the market one year ago. This time last year it had shown signs of weakening, and from that time onward there was a gradual decline and matters went from bad to worse till the market in May and June was completely demoralized. Dealers have pursued a very sensible policy by keeping prices steady and not attempting to boom the market, and the prospects are that the market will be gradually cleared up and brought into fair shape for next season's trade. This is very much to be desired, and we hope shippers, dealers and salesmen will all unanimously combine to bring about this desirable object. This can be very much facilitated by our factory-men making as few cheese in the first half of May as possible. We think this a very desirable and important point. It was brought up at the Convention at Woodstock a few weeks ago, but we are not aware that anything definite was done. We think the Board of the Western Dairymen's Association should take this matter up and endeavor to have the factories agree to not open their factories till about the 15th of May.

BUTTER.

Really choice fresh butter and fine fall made are in good demand, but anything below is not wanted at any price if the better qualities are obtainable. We hope farmers and makers of these qualities will soon have to give up making such or turn over a new leaf and make what the trade and consumers want.

PRICES AT FARMERS' WAGONS, TORONTO.

	Jan. 29, 1886.
Wheat, fall, per bushel.....	\$0 80 0 82
Wheat, spring, do.....	0 75 0 82
Wheat, goose, do.....	0 68 0 70
Barley, do.....	0 60 0 63
Oats, do.....	0 35 0 36
Peas, do.....	0 58 0 60
Beans, do.....	0 60 0 60
Bye, do.....	1 00 1 25
Dressed hogs, per 100 lbs.....	5 25 5 50
Beef, forequarters.....	3 60 4 50
Beef, hindquarters.....	6 03 7 50
Mutton, carcass.....	6 40 8 50
Lamb.....	6 40 8 50
Hay, timothy.....	13 00 15 00
Hay, clover.....	11 00 12 00

TORONTO SEED MARKET.

	Jan. 29, 1886.
Alsike clover seed.....	\$5 75 6 50
Red.....	6 25 0 00
Timothy seed.....	2 25 0 00

PRICES AT ST. LAWRENCE MARKET, TORONTO.

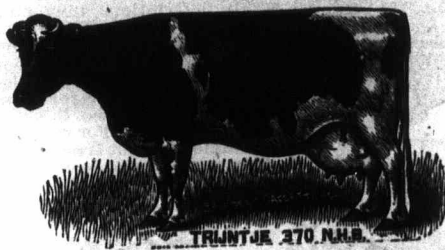
	Jan. 29, 1886.
Chickens, per pair.....	\$0 50 0 80
Ducks do.....	0 65 0 90
Butter, pound rolls.....	22 25
Butter, large rolls.....	15 16
Butter, inferior.....	10 12
Lard.....	30 00
Bacon.....	9 11
Turkeys.....	75 1 50
Geese.....	70 85
Cheese.....	8 11
Eggs, fresh, per dozen.....	22 25
Potatoes, per bag (new).....	70 75
Apples per bbl.....	1 00 2 00
Cabbage, per doz.....	75 90
Turnips per bag.....	35 40
Carrots, per bag.....	40 45
Beets, per peck.....	15 00
Parsnips, per peck.....	15 20
Onions, per bag.....	1 00 1 10

The seed catalogue and prize list of Samuel Wilson, of Mechanicsville, Pa., is at hand.

The seed catalogue of Peter Henderson & Co., of New York, has been received. It will be sent to any of our readers who forward six cents to pay postage.

POULTRY SHOW.—The exhibition of the Stratford and Seaford Poultry Association has just been held in the City Hall, Stratford. The show was a credit to the poultry and pet stock fanciers. The birds at this season of the year look much better than in the fall. The judging was done according to the American score card by Mr. A. F. Stevens, of Wollesley, Mass. This makes the 224th show he has judged, and he says he never judged a better lot of fowls at any one exhibition.

NEW ADVERTISEMENTS.

Holstein-Friesian Cattle
AT AUCTION

AT GRAND'S REPOSITORY.
47 TO 53 ADELAIDE-ST. WEST, TORONTO, ONT.

W. D. GRAND, AUCTIONEER.

TUESDAY, MARCH 30TH, 1886, AT 11 A M

The great demand in Canada for these cattle, and the inconvenience attending the quarantining of small lots, has induced us to send a shipment of 23 head from our own herd, to which will be added about 15 head from the prize herd of H. M. Williams, of Platon, Ont. These cattle will arrive at Grand's Repository, March 25th, and remain there for inspection until date of sale. Every animal is registered in the Holstein or Holstein-Friesian Herd Book of America, and the certificates of registry and transfer papers will be furnished with each animal sold.

For illustrated catalogue address

B. B. LORD & SON,
242- Sinclairville, Chaut. Co., New York.

WANTED.

A MARRIED COUPLE TO WORK ON A FARM near Philadelphia, U. S. Man must be a first-class ploughman and general farm hand, and his wife capable of managing the housekeeping, and boarding the additional farm hands, and for which a fixed sum per head will be paid her. Young children objected to. Liberal wages and good home to right parties. Manager of place is Scotch. Address with full particulars and references to

242- MR. GOLDIE, CORUNNA, Ont., Canada.